

## Product datasheet for **TA372389S**

### Cytochrome P450 3A5 (CYP3A5) Rabbit Polyclonal Antibody

#### Product data:

Product Type:	Primary Antibodies
Applications:	IHC, WB
Recommended Dilution:	WB: 200-1000 WB positive control: HEPG2 cell lysate IHC: 25-100 Positive control: Human liver cancer Predicted cell location: Cell membrane
Reactivity:	Human
Host:	Rabbit
Isotype:	IgG
Clonality:	Polyclonal
Immunogen:	Synthetic peptide of human CYP3A5
Formulation:	pH7.4 PBS, 0.05% NaN <sub>3</sub> , 40% Glycerol
Concentration:	lot specific
Purification:	Antigen affinity purification
Conjugation:	Unconjugated
Storage:	Store at -20°C.
Stability:	1 year
Predicted Protein Size:	57 kDa
Gene Name:	cytochrome P450 family 3 subfamily A member 5
Database Link:	<a href="#">Entrez Gene 1577 Human P20815</a>



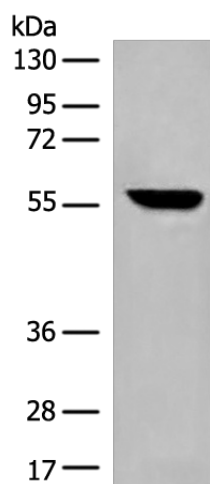
[View online »](#)

**Background:**

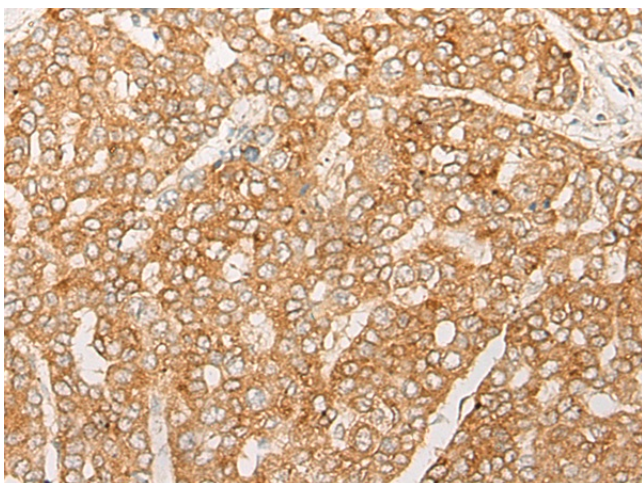
This gene encodes a member of the cytochrome P450 superfamily of enzymes. The cytochrome P450 proteins are monooxygenases which catalyze many reactions involved in drug metabolism and synthesis of cholesterol, steroids and other lipids. The encoded protein metabolizes drugs as well as the steroid hormones testosterone and progesterone. This gene is part of a cluster of cytochrome P450 genes on chromosome 7q21.1. Two pseudogenes of this gene have been identified within this cluster on chromosome 7. Expression of this gene is widely variable among populations, and a single nucleotide polymorphism that affects transcript splicing has been associated with susceptibility to hypertension. Alternative splicing results in multiple transcript variants.

**Synonyms:**

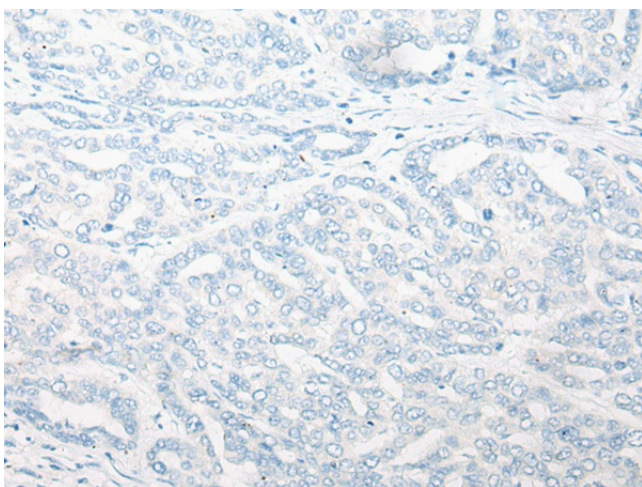
CP35; CYP3A5; HLp2; P450-PCN3; P450PCN3; PCN3

**Product images:**

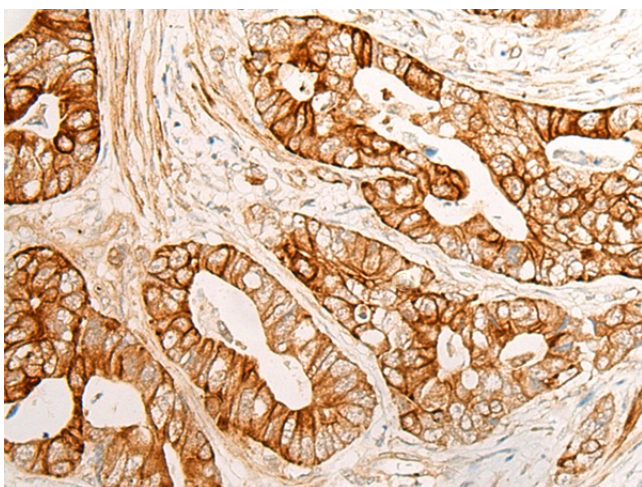
Gel: 8%SDS-PAGE  
Lysate: 40 µg  
Lane: HEPG2 cell lysate  
Primary antibody: [TA372389] (CYP3A5 Antibody) at dilution 1/300  
Secondary antibody: Goat anti rabbit IgG at 1/8000 dilution  
Exposure time: 7 seconds



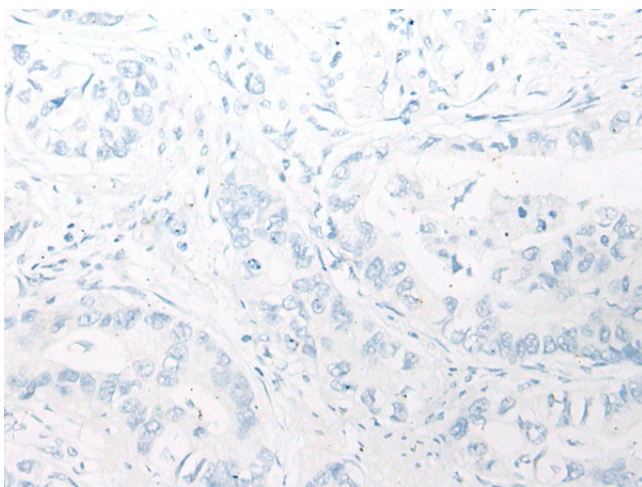
Immunohistochemistry of paraffin-embedded Human liver cancer tissue using [TA372389] (CYP3A5 Antibody) at dilution 1/20 (Original magnification: ×200)



Immunohistochemistry of paraffin-embedded Human liver cancer tissue using [TA372389] (CYP3A5 Antibody) at dilution 1/20, treated with synthetic peptide. (Original magnification:  $\times 200$ )



Immunohistochemistry of paraffin-embedded Human gastric cancer tissue using [TA372389] (CYP3A5 Antibody) at dilution 1/20 (Original magnification:  $\times 200$ )



Immunohistochemistry of paraffin-embedded Human gastric cancer tissue using [TA372389] (CYP3A5 Antibody) at dilution 1/20, treated with synthetic peptide. (Original magnification:  $\times 200$ )