

Product datasheet for **TA372385**

CysLT2 (CYSLTR2) Rabbit Polyclonal Antibody

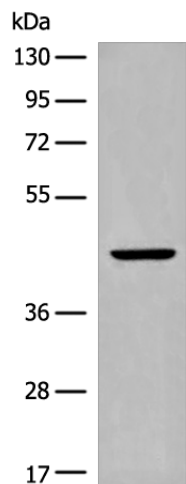
Product data:

Product Type:	Primary Antibodies
Applications:	IHC, WB
Recommended Dilution:	WB: 200-1000 WB positive control: Mouse adrenal gland tissue lysate IHC: 20-100 Positive control: Human gastric cancer Predicted cell location: Cytoplasm and Cell membrane
Reactivity:	Human, Mouse
Host:	Rabbit
Isotype:	IgG
Clonality:	Polyclonal
Immunogen:	Synthetic peptide of human CYSLTR2
Formulation:	pH7.4 PBS, 0.05% NaN ₃ , 40% Glycerol
Concentration:	lot specific
Purification:	Antigen affinity purification
Conjugation:	Unconjugated
Storage:	Store at -20°C.
Stability:	1 year
Predicted Protein Size:	40 kDa
Gene Name:	cysteinyl leukotriene receptor 2
Database Link:	Entrez Gene 57105 Human Q9NS75
Background:	The cysteinyl leukotrienes LTC ₄ , LTD ₄ , and LTE ₄ are important mediators of human bronchial asthma. Pharmacologic studies have determined that cysteinyl leukotrienes activate at least 2 receptors, the protein encoded by this gene and CYSLTR1. This encoded receptor is a member of the superfamily of G protein-coupled receptors. It seems to play a major role in endocrine and cardiovascular systems.
Synonyms:	CysLT(2); CYSLT2; CYSLT2R; GPCR; HG57; hGPCR21; HPN321; KPG_011; PSEC0146

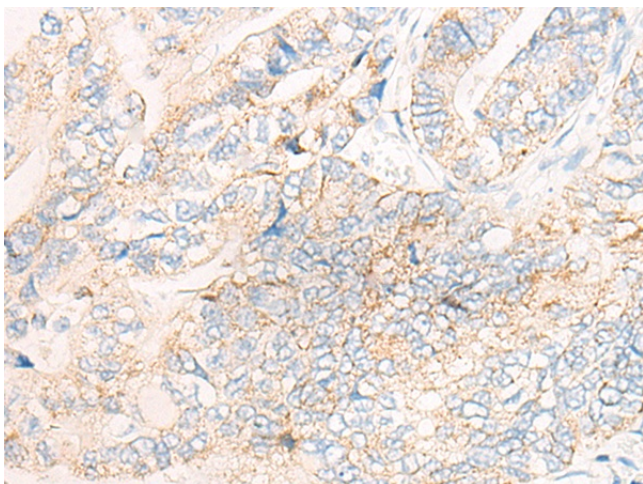


[View online »](#)

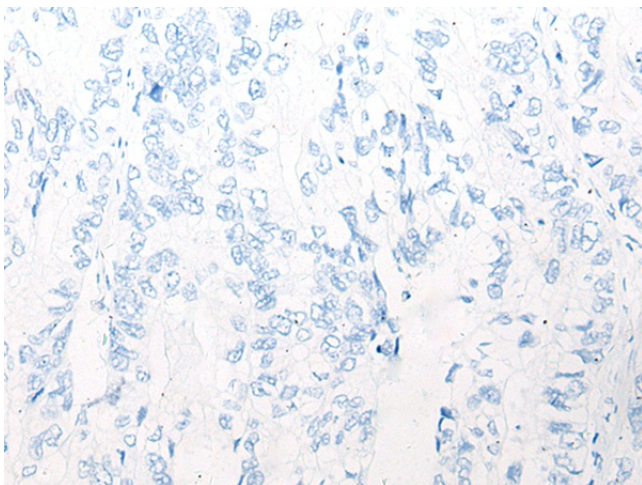
Product images:



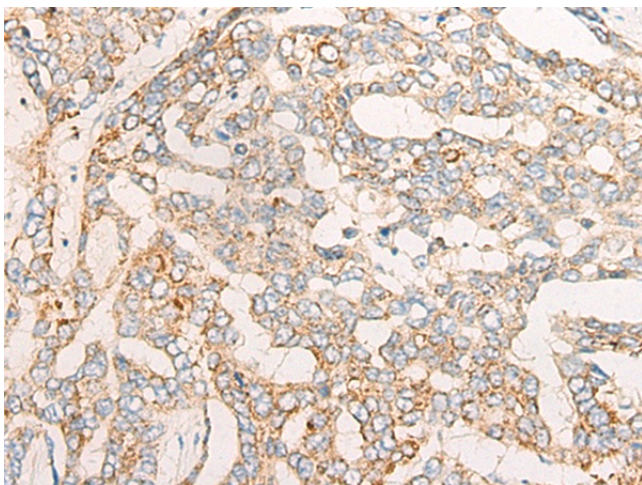
Gel: 8%SDS-PAGE
Lysate: 40 μ g
Lane: Mouse adrenal gland tissue lysate
Primary antibody: TA372385 (CYSLTR2 Antibody) at dilution 1/300
Secondary antibody: Goat anti rabbit IgG at 1/8000 dilution
Exposure time: 40 seconds



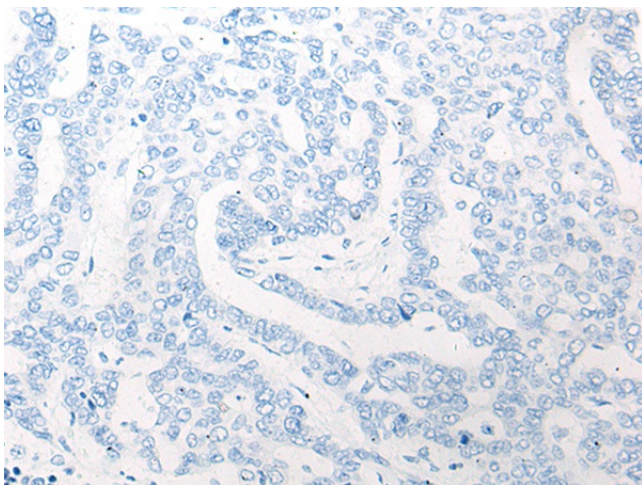
Immunohistochemistry of paraffin-embedded Human gastric cancer tissue using TA372385 (CYSLTR2 Antibody) at dilution 1/20 (Original magnification: \times 200)



Immunohistochemistry of paraffin-embedded Human gastric cancer tissue using TA372385 (CYSLTR2 Antibody) at dilution 1/20, treated with synthetic peptide. (Original magnification: ×200)



Immunohistochemistry of paraffin-embedded Human liver cancer tissue using TA372385 (CYSLTR2 Antibody) at dilution 1/20 (Original magnification: ×200)



Immunohistochemistry of paraffin-embedded Human liver cancer tissue using TA372385 (CYSLTR2 Antibody) at dilution 1/20, treated with synthetic peptide. (Original magnification: ×200)