

## Product datasheet for **TA372379S**

### **CYLN2 (CLIP2) Rabbit Polyclonal Antibody**

#### **Product data:**

Product Type:	Primary Antibodies
Applications:	IHC, WB
Recommended Dilution:	WB: 200-1000 WB positive control: LOVO and NIH/3T3 cell lysates IHC: 20-100 Positive control: Human liver cancer Predicted cell location: Cytoplasm
Reactivity:	Human, Mouse, Rat
Host:	Rabbit
Isotype:	IgG
Clonality:	Polyclonal
Immunogen:	Synthetic peptide of human CLIP2
Formulation:	pH7.4 PBS, 0.05% NaN <sub>3</sub> , 40% Glycerol
Concentration:	lot specific
Purification:	Antigen affinity purification
Conjugation:	Unconjugated
Storage:	Store at -20°C.
Stability:	1 year
Predicted Protein Size:	116 kDa
Gene Name:	CAP-Gly domain containing linker protein 2
Database Link:	<a href="#">Entrez Gene 7461 Human Q9UDT6</a>

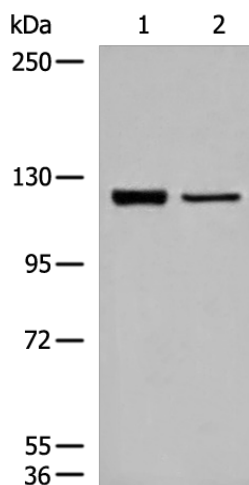
**Background:** The protein encoded by this gene belongs to the family of cytoplasmic linker proteins, which have been proposed to mediate the interaction between specific membranous organelles and microtubules. This protein was found to associate with both microtubules and an organelle called the dendritic lamellar body. This gene is hemizygotously deleted in Williams syndrome, a multisystem developmental disorder caused by the deletion of contiguous genes at 7q11.23. Alternative splicing of this gene generates 2 transcript variants.



[View online »](#)

**Synonyms:** CLIP; CLIP-115; CYLN2; KIAA0291; MGC11333; OTTHUMP00000160724; WBSCR3; WBSCR4; WSCR3; WSCR4

### Product images:



Gel: 6%SDS-PAGE

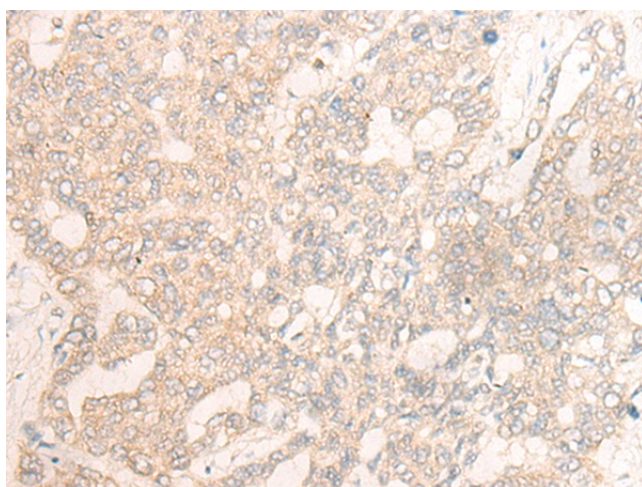
Lysate: 40  $\mu$ g

Lane 1-2: LOVO and NIH/3T3 cell lysates

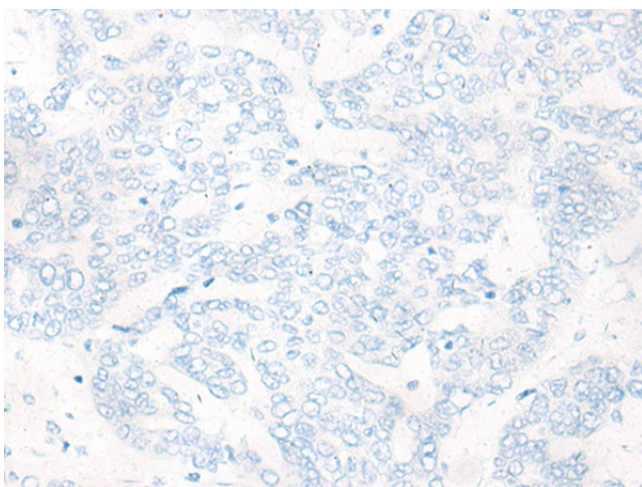
Primary antibody: [TA372379] (CLIP2 Antibody) at dilution 1/300

Secondary antibody: Goat anti rabbit IgG at 1/8000 dilution

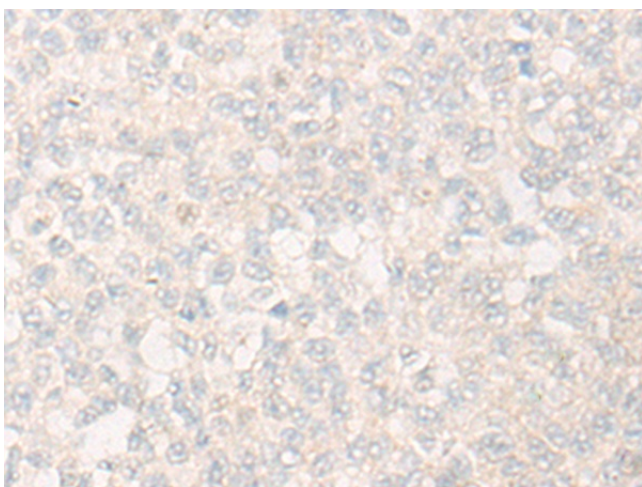
Exposure time: 40 seconds



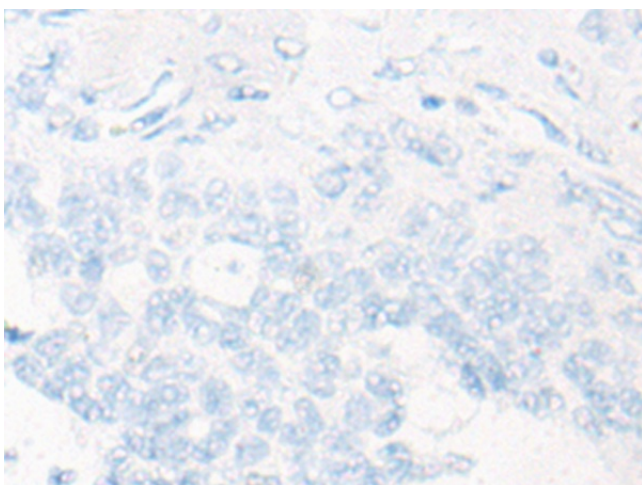
Immunohistochemistry of paraffin-embedded Human liver cancer tissue using [TA372379] (CLIP2 Antibody) at dilution 1/20 (Original magnification:  $\times 200$ )



Immunohistochemistry of paraffin-embedded Human liver cancer tissue using [TA372379] (CLIP2 Antibody) at dilution 1/20, treated with synthetic peptide. (Original magnification: x200)



Immunohistochemistry of paraffin-embedded Human ovarian cancer tissue using [TA372379] (CLIP2 Antibody) at dilution 1/20 (Original magnification: x200)



Immunohistochemistry of paraffin-embedded Human ovarian cancer tissue using [TA372379] (CLIP2 Antibody) at dilution 1/20, treated with synthetic peptide. (Original magnification: x200)