

Product datasheet for **TA372376S**

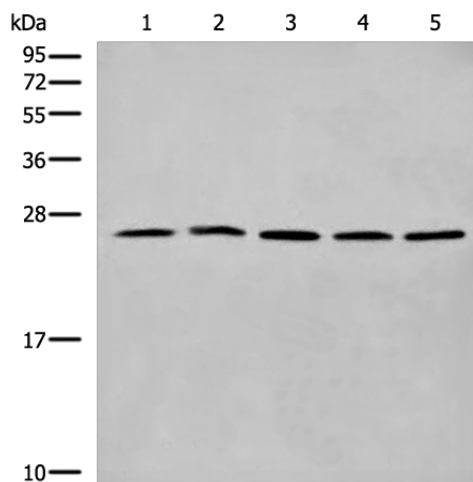
CYB5D1 Rabbit Polyclonal Antibody

Product data:

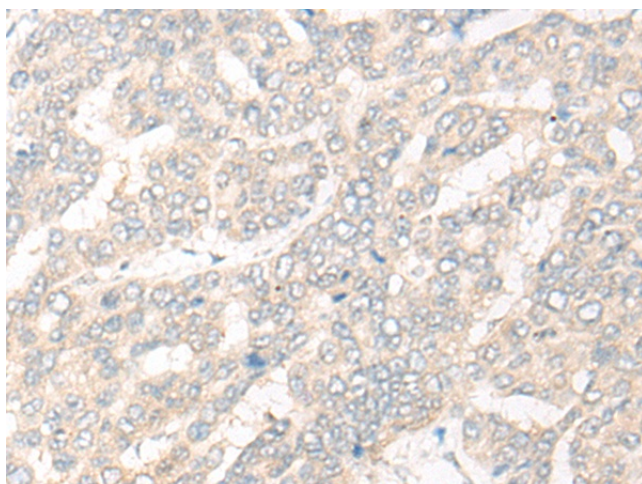
Product Type:	Primary Antibodies
Applications:	IHC, WB
Recommended Dilution:	WB: 200-1000 WB positive control: Hela PC-3 A549 293T and 231 cell lysates IHC: 20-100 Positive control: Human liver cancer Predicted cell location: Cytoplasm
Reactivity:	Human, Mouse
Host:	Rabbit
Isotype:	IgG
Clonality:	Polyclonal
Immunogen:	Synthetic peptide of human CYB5D1
Formulation:	pH7.4 PBS, 0.05% NaN ₃ , 40% Glycerol
Concentration:	lot specific
Purification:	Antigen affinity purification
Conjugation:	Unconjugated
Storage:	Store at -20°C.
Stability:	1 year
Predicted Protein Size:	27 kDa
Gene Name:	cytochrome b5 domain containing 1
Database Link:	Entrez Gene 124637 Human Q6P9G0
Background:	CYB5D1 belongs to the cytochrome b5 family and contains 1 cytochrome b5 heme-binding domain. Cytochromes b5 are ubiquitous electron transport proteins found in animals, plants and yeasts. There are 2 named isoforms produced by alternative splicing.
Synonyms:	FLJ32499



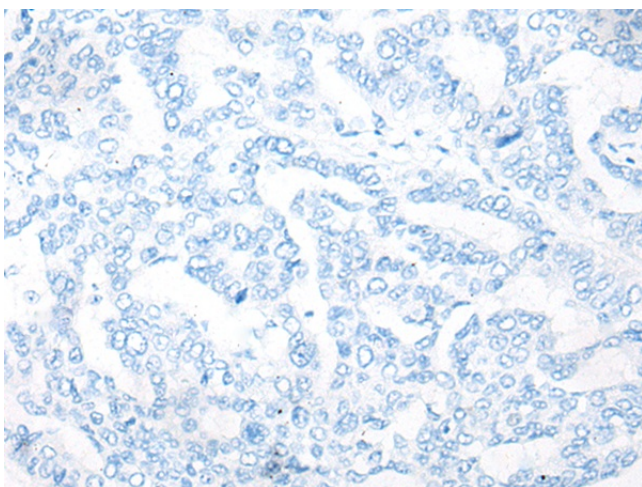
[View online »](#)

Product images:


Gel: 12%SDS-PAGE
 Lysate: 40 µg
 Lane 1-5: HeLa
 PC-3
 A549
 293T and 231 cell lysates
 Primary antibody: [TA372376] (CYB5D1 Antibody)
 at dilution 1/300
 Secondary antibody: Goat anti rabbit IgG at
 1/8000 dilution
 Exposure time: 1 minute



Immunohistochemistry of paraffin-embedded
 Human liver cancer tissue using [TA372376]
 (CYB5D1 Antibody) at dilution 1/20 (Original
 magnification: ×200)



Immunohistochemistry of paraffin-embedded Human liver cancer tissue using [TA372376] (CYB5D1 Antibody) at dilution 1/20, treated with synthetic peptide. (Original magnification: $\times 200$)