

Product datasheet for **TA372362**

BOP1 Rabbit Polyclonal Antibody

Product data:

Product Type:	Primary Antibodies
Applications:	IHC
Recommended Dilution:	IHC: 20-100 Positive control: Human esophagus cancer Predicted cell location: Nucleus
Reactivity:	Human, Mouse, Rat
Host:	Rabbit
Isotype:	IgG
Clonality:	Polyclonal
Immunogen:	Synthetic peptide of human BOP1
Formulation:	pH7.4 PBS, 0.05% NaN ₃ , 40% Glycerol
Concentration:	lot specific
Purification:	Antigen affinity purification
Conjugation:	Unconjugated
Storage:	Store at -20°C.
Stability:	1 year
Gene Name:	block of proliferation 1
Database Link:	Entrez Gene 23246 Human Q14137



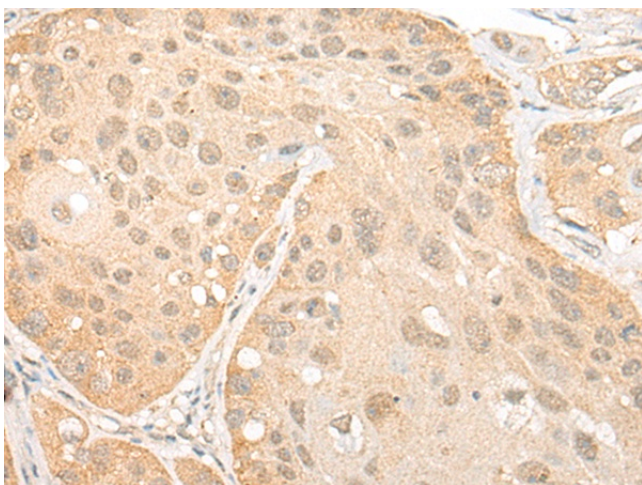
[View online »](#)

Background:

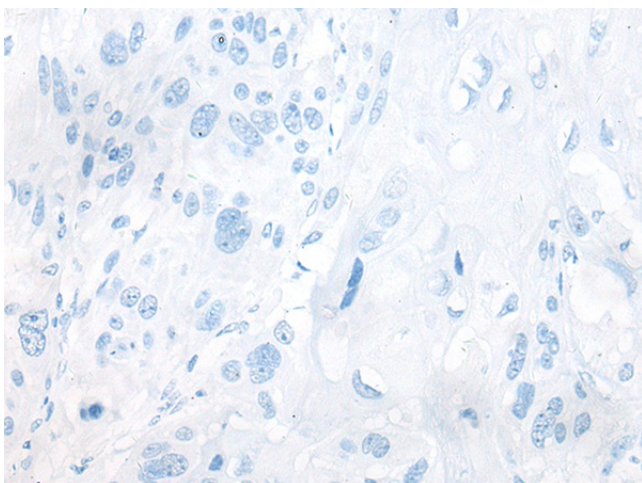
BOP1(block of proliferation 1 protein) is a 746 amino acid highly conserved non-ribosomal protein that is involved in ribosome biogenesis. Truncation of the amino terminus of BOP1 leads to cell growth arrest in the G1 phase and specific inhibition of 28S and 5.8S rRNA synthesis, as well as a deficit in the cytosolic 60S ribosomal subunit. This suggests that BOP1 is involved in the formation of mature rRNAs and in the biogenesis of the 60S ribosomal subunit. BOP1 physically interacts with pescadillo (a protein involved in cell proliferation) and enables efficient incorporation of pescadillo into the nucleolar preribosomal complexes, thereby affecting rRNA maturation and the cell cycle. The BOP1-pescadillo complex is also necessary for biogenesis of 60S ribosomal subunits. Deregulation of BOP1 may lead to colorectal tumorigenesis.

Synonyms:

KIAA0124

Product images:

Immunohistochemistry of paraffin-embedded Human esophagus cancer tissue using TA372362 (BOP1 Antibody) at dilution 1/25 (Original magnification: ×200)



Immunohistochemistry of paraffin-embedded Human esophagus cancer tissue using TA372362 (BOP1 Antibody) at dilution 1/25, treated with synthetic peptide. (Original magnification: ×200)