

## Product datasheet for **TA372357S**

### CNGA4 Rabbit Polyclonal Antibody

#### Product data:

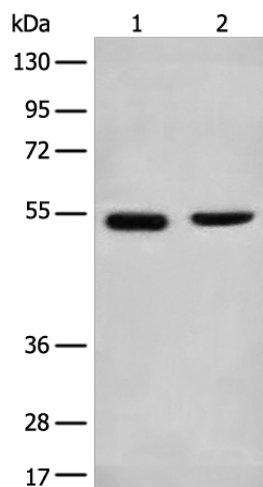
Product Type:	Primary Antibodies
Applications:	IHC, WB
Recommended Dilution:	WB: 200-1000 WB positive control: Human cerebrum tissue and Human cerebella tissue lysates IHC: 20-100 Positive control: Human liver cancer Predicted cell location: Cell membrane
Reactivity:	Human, Mouse, Rat
Host:	Rabbit
Isotype:	IgG
Clonality:	Polyclonal
Immunogen:	Synthetic peptide of human CNGA4
Formulation:	pH7.4 PBS, 0.05% NaN <sub>3</sub> , 40% Glycerol
Concentration:	lot specific
Purification:	Antigen affinity purification
Conjugation:	Unconjugated
Storage:	Store at -20°C.
Stability:	1 year
Predicted Protein Size:	66 kDa
Gene Name:	cyclic nucleotide gated channel alpha 4
Database Link:	<a href="#">Entrez Gene 1262 Human Q8IV77</a>
Background:	Second messenger, cAMP, causes the opening of cation-selective cyclic nucleotide-gated (CNG) channels and depolarization of the neuron (olfactory sensory neurons, OSNs). CNGA4 is the modulatory subunit of this channel which is known to play a central role in the transduction of odorant signals and subsequent adaptation. By accelerating the calcium-mediated negative feedback in olfactory signaling it allows rapid adaptation to odor stimulation and extends its range of odor detection.



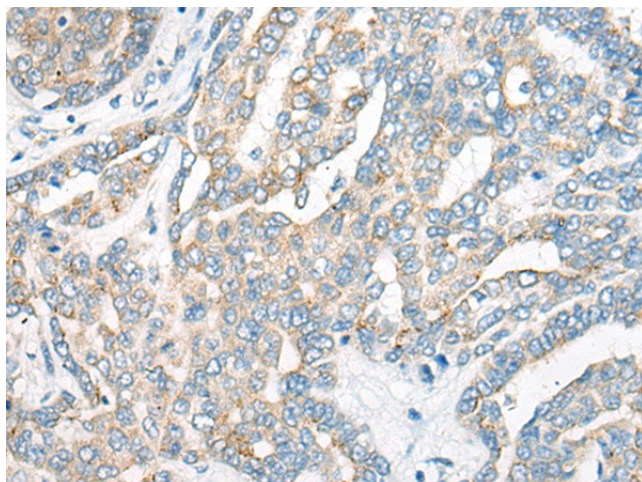
[View online »](#)

Synonyms: CNCA2; CNG-4; CNG4; CNG5; CNGB2; MGC126168; MGC126169; OCNC2; OCNCb; OCNCBETA

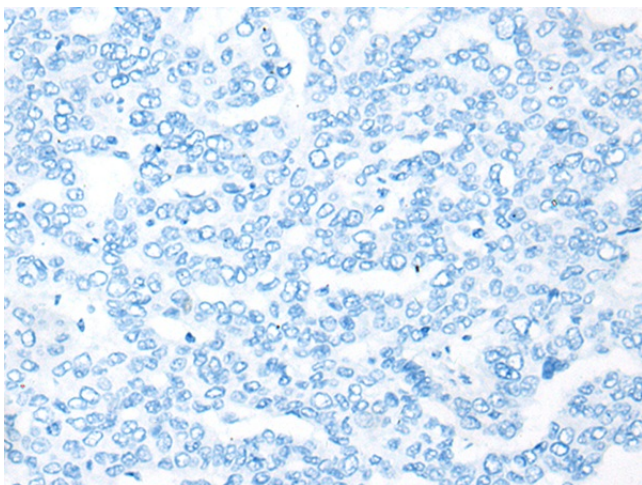
### Product images:



Gel: 8%SDS-PAGE  
Lysate: 40  $\mu$ g  
Lane 1-2: Human cerebrum tissue and Human cerebella tissue lysates  
Primary antibody: [TA372357] (CNGA4 Antibody) at dilution 1/200  
Secondary antibody: Goat anti rabbit IgG at 1/8000 dilution  
Exposure time: 5 seconds



Immunohistochemistry of paraffin-embedded Human liver cancer tissue using [TA372357] (CNGA4 Antibody) at dilution 1/20 (Original magnification:  $\times$ 200)



Immunohistochemistry of paraffin-embedded Human liver cancer tissue using [TA372357] (CNGA4 Antibody) at dilution 1/20, treated with synthetic peptide. (Original magnification: ×200)