

Product datasheet for **TA372329**

HIPK2 Rabbit Polyclonal Antibody

Product data:

Product Type:	Primary Antibodies
Applications:	IHC, WB
Recommended Dilution:	WB: 500-2000 WB positive control: 231 cell lysate IHC: 30-150 Positive control: Human esophagus cancer Predicted cell location: Nucleus or Cytoplasm
Reactivity:	Human, Mouse
Host:	Rabbit
Isotype:	IgG
Clonality:	Polyclonal
Immunogen:	Synthetic peptide of human HIPK2
Formulation:	pH7.4 PBS, 0.05% NaN ₃ , 40% Glycerol
Concentration:	lot specific
Purification:	Antigen affinity purification
Conjugation:	Unconjugated
Storage:	Store at -20°C.
Stability:	1 year
Predicted Protein Size:	131 kDa
Gene Name:	homeodomain interacting protein kinase 2
Database Link:	Entrez Gene 28996 Human Q9H2X6

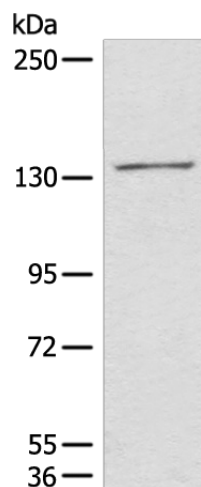
Background: This gene encodes a conserved serine/threonine kinase that is a member of the homeodomain-interacting protein kinase family. The encoded protein interacts with homeodomain transcription factors and many other transcription factors such as p53, and can function as both a corepressor and a coactivator depending on the transcription factor and its subcellular localization. Multiple transcript variants encoding different isoforms have been found for this gene.



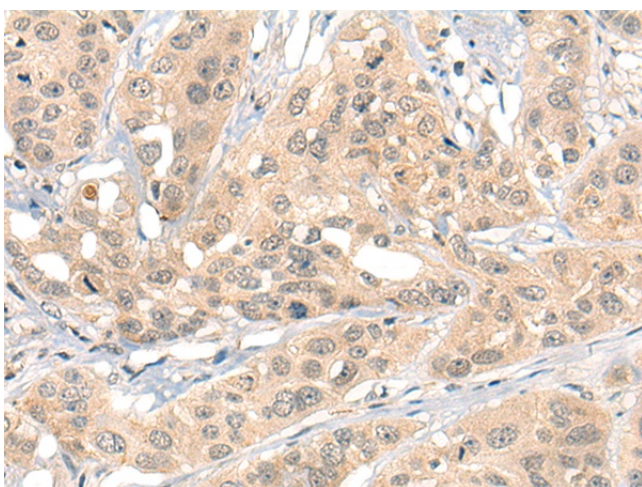
[View online »](#)

Synonyms: DKFZp686K02111; FLJ23711; hHIPk2; PRO0593

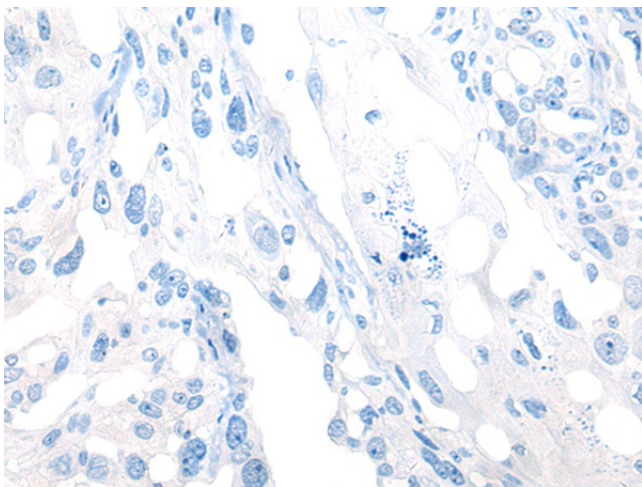
Product images:



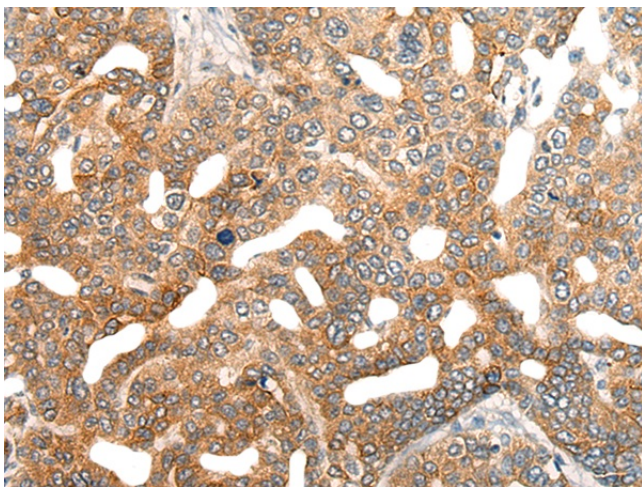
Gel: 6%SDS-PAGE
Lysate: 40 μ g
Lane: 231 cell lysate
Primary antibody: TA372329 (HIPK2 Antibody) at dilution 1/850
Secondary antibody: Goat anti rabbit IgG at 1/8000 dilution
Exposure time: 2 minutes



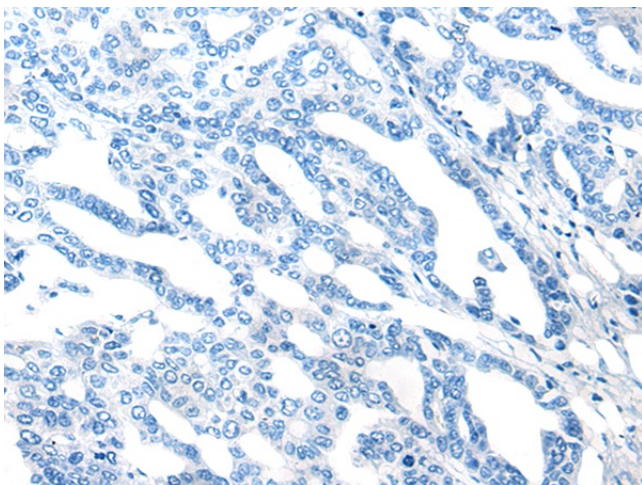
Immunohistochemistry of paraffin-embedded Human esophagus cancer tissue using TA372329 (HIPK2 Antibody) at dilution 1/40 (Original magnification: $\times 200$)



Immunohistochemistry of paraffin-embedded Human esophagus cancer tissue using TA372329 (HIPK2 Antibody) at dilution 1/40, treated with synthetic peptide. (Original magnification: ×200)



Immunohistochemistry of paraffin-embedded Human liver cancer tissue using TA372329 (HIPK2 Antibody) at dilution 1/40 (Original magnification: ×200)



Immunohistochemistry of paraffin-embedded Human liver cancer tissue using TA372329 (HIPK2 Antibody) at dilution 1/40, treated with synthetic peptide. (Original magnification: ×200)