

## Product datasheet for **TA372327**

### COX6A2 Rabbit Polyclonal Antibody

#### Product data:

Product Type:	Primary Antibodies
Applications:	IHC, WB
Recommended Dilution:	WB: 500-2000 WB positive control: Human muscle tissue□Human heart tissue□Mouse heart tissue lysates IHC: 25-100 Positive control: Human gastric cancer Predicted cell location: Mitochondrion inner membrane
Reactivity:	Human, Mouse, Rat
Host:	Rabbit
Isotype:	IgG
Clonality:	Polyclonal
Immunogen:	Synthetic peptide of human COX6A2
Formulation:	pH7.4 PBS, 0.05% NaN <sub>3</sub> , 40% Glycerol
Concentration:	lot specific
Purification:	Antigen affinity purification
Conjugation:	Unconjugated
Storage:	Store at -20°C.
Stability:	1 year
Predicted Protein Size:	11 kDa
Gene Name:	cytochrome c oxidase subunit 6A2
Database Link:	<a href="#">Entrez Gene 1339 Human Q02221</a>



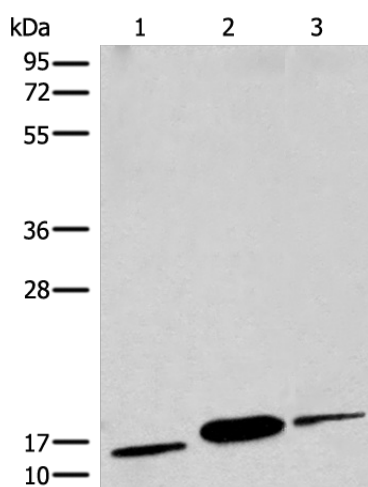
[View online »](#)

**Background:**

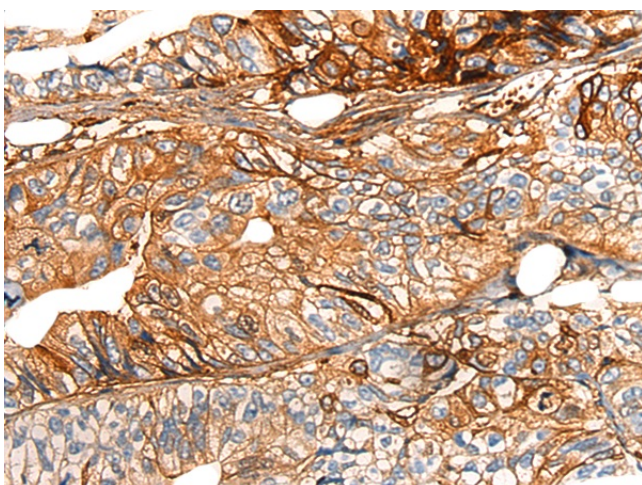
Cytochrome c oxidase (COX), the terminal enzyme of the mitochondrial respiratory chain, catalyzes the electron transfer from reduced cytochrome c to oxygen. It is a heteromeric complex consisting of 3 catalytic subunits encoded by mitochondrial genes and multiple structural subunits encoded by nuclear genes. The mitochondrially-encoded subunits function in electron transfer, and the nuclear-encoded subunits may be involved in the regulation and assembly of the complex. This nuclear gene encodes polypeptide 2 (heart/muscle isoform) of subunit VIa, and polypeptide 2 is present only in striated muscles. Polypeptide 1 (liver isoform) of subunit VIa is encoded by a different gene, and is found in all non-muscle tissues. These two polypeptides share 66% amino acid sequence identity.

**Synonyms:**

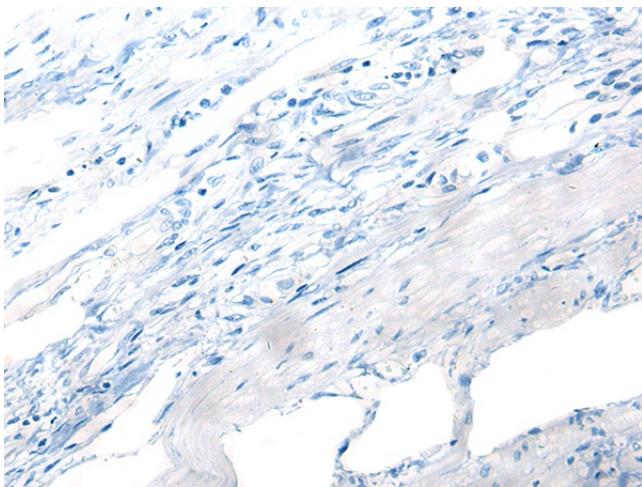
COX6A; COX6AH; COXVIAH

**Product images:**

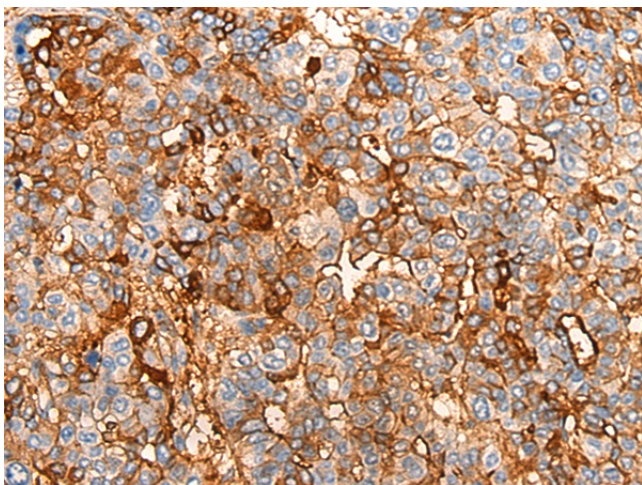
Gel: 12%SDS-PAGE  
Lysate: 40 µg  
Lane 1-3: Human muscle tissue  
Human heart tissue  
Mouse heart tissue lysates  
Primary antibody: TA372327 (COX6A2 Antibody)  
at dilution 1/450  
Secondary antibody: Goat anti rabbit IgG at  
1/8000 dilution  
Exposure time: 5 seconds



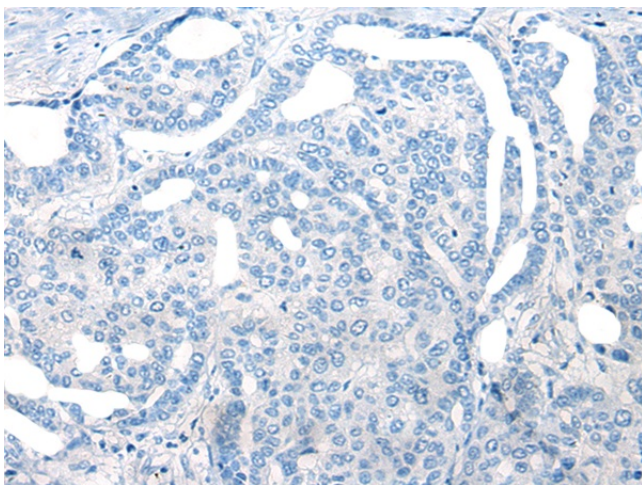
Immunohistochemistry of paraffin-embedded  
Human gastric cancer tissue using TA372327  
(COX6A2 Antibody) at dilution 1/20 (Original  
magnification: ×200)



Immunohistochemistry of paraffin-embedded Human gastric cancer tissue using TA372327 (COX6A2 Antibody) at dilution 1/20, treated with synthetic peptide. (Original magnification: ×200)



Immunohistochemistry of paraffin-embedded Human liver cancer tissue using TA372327 (COX6A2 Antibody) at dilution 1/20 (Original magnification: ×200)



Immunohistochemistry of paraffin-embedded Human liver cancer tissue using TA372327 (COX6A2 Antibody) at dilution 1/20, treated with synthetic peptide. (Original magnification: ×200)