

Product datasheet for **TA372319**

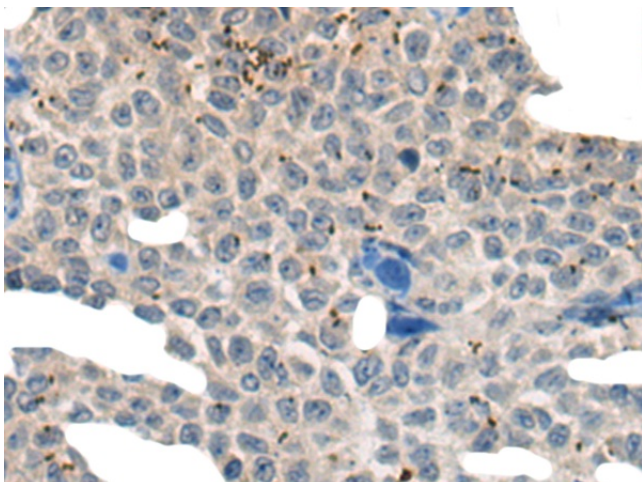
C6orf150 (MB21D1) Rabbit Polyclonal Antibody

Product data:

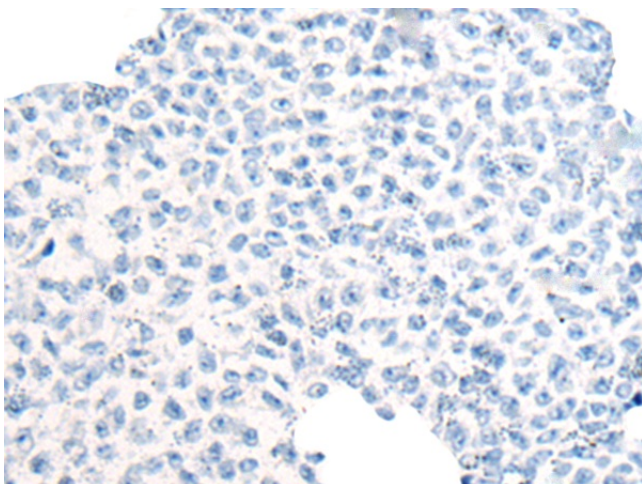
Product Type:	Primary Antibodies
Applications:	IHC
Recommended Dilution:	IHC: 10-50 Positive control: Human ovarian cancer Predicted cell location: Cytoplasm
Reactivity:	Human
Host:	Rabbit
Isotype:	IgG
Clonality:	Polyclonal
Immunogen:	Synthetic peptide of human CGAS
Formulation:	pH7.4 PBS, 0.05% NaN ₃ , 40% Glycerol
Concentration:	lot specific
Purification:	Antigen affinity purification
Conjugation:	Unconjugated
Storage:	Store at -20°C.
Stability:	1 year
Gene Name:	Mab-21 domain containing 1
Database Link:	Entrez Gene 115004 Human Q8N884
Background:	cGAS (cyclic GMP-AMP synthase), also known as MB21D1 (Mab-21 domain containing 1), h-cGAS or C6orf150, is a 522 amino acid cytoplasmic nucleotidyltransferase that catalyzes the formation of cyclic GMP-AMP (cGAMP) from ATP and GTP. cGAS is suggested to have antiviral activity by acting as a key cytosolic DNA sensor. cGAS binds to cytosolic DNA, which leads to cGAMP synthesis and activation of TMEM173, thereby trigger type-I interferon production. Expressed in monocytic cell line THP1, cGAS exists as two alternatively spliced isoforms and is encoded by a gene located on human chromosome 6q13.
Synonyms:	C6orf150; cGAS; h-cGAS



[View online »](#)

Product images:

Immunohistochemistry of paraffin-embedded Human ovarian cancer tissue using TA372319 (CGAS Antibody) at dilution 1/20 (Original magnification: $\times 200$)



Immunohistochemistry of paraffin-embedded Human ovarian cancer tissue using TA372319 (CGAS Antibody) at dilution 1/20, treated with synthetic peptide. (Original magnification: $\times 200$)