

## Product datasheet for **TA372318S**

### DYRK1A Rabbit Polyclonal Antibody

#### Product data:

|                         |  |
|-------------------------|--|
| Product Type:           | Primary Antibodies   |
| Applications:           | IHC, WB  |
| Recommended Dilution:   | WB: 200-1000<br>WB positive control: 293T,HEPG2,K562 and PC-3 cell lysates<br>IHC: 25-100<br>Positive control: Human liver cancer<br>Predicted cell location: Cytoplasm or Nucleus |
| Reactivity:             | Human, Mouse, Rat  |
| Host:                   | Rabbit   |
| Isotype:                | IgG  |
| Clonality:              | Polyclonal   |
| Immunogen:              | Synthetic peptide of human DYRK1A  |
| Formulation:            | pH7.4 PBS, 0.05% NaN <sub>3</sub> , 40% Glycerol   |
| Concentration:          | lot specific   |
| Purification:           | Antigen affinity purification  |
| Conjugation:            | Unconjugated   |
| Storage:                | Store at -20°C.  |
| Stability:              | 1 year   |
| Predicted Protein Size: | 85 kDa   |
| Gene Name:              | dual specificity tyrosine phosphorylation regulated kinase 1A  |
| Database Link:          | <a href="#">Entrez Gene 1859 Human Q13627</a>  |



[View online »](#)

**Background:**

This gene encodes a member of the Dual-specificity tyrosine phosphorylation-regulated kinase (DYRK) family. This member contains a nuclear targeting signal sequence, a protein kinase domain, a leucine zipper motif, and a highly conservative 13-consecutive-histidine repeat. It catalyzes its autophosphorylation on serine/threonine and tyrosine residues. It may play a significant role in a signaling pathway regulating cell proliferation and may be involved in brain development. This gene is a homolog of *Drosophila* *mnb* (minibrain) gene and rat *Dyrk* gene. It is localized in the Down syndrome critical region of chromosome 21, and is considered to be a strong candidate gene for learning defects associated with Down syndrome. Alternative splicing of this gene generates several transcript variants differing from each other either in the 5' UTR or in the 3' coding region. These variants encode at least five different isoforms.

**Synonyms:**

DYRK; DYRK1; hMNB; HP86; MNB; MNBH; OTTHUMP00000109090

**Product images:**

Gel: 6%SDS-PAGE

Lysate: 40 µg

Lane 1-4: 293T

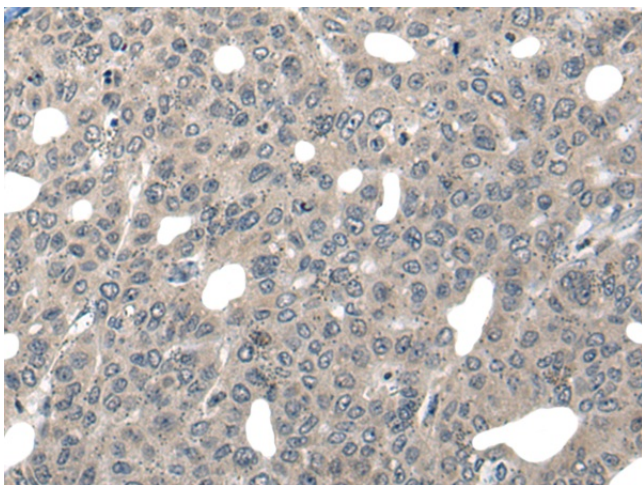
HEPG2

K562 and PC-3 cell lysates

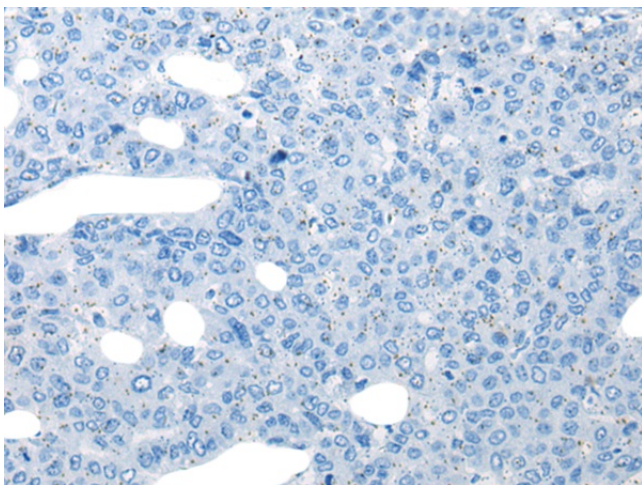
Primary antibody: [TA372318] (DYRK1A Antibody)  
at dilution 1/200

Secondary antibody: Goat anti rabbit IgG at  
1/8000 dilution

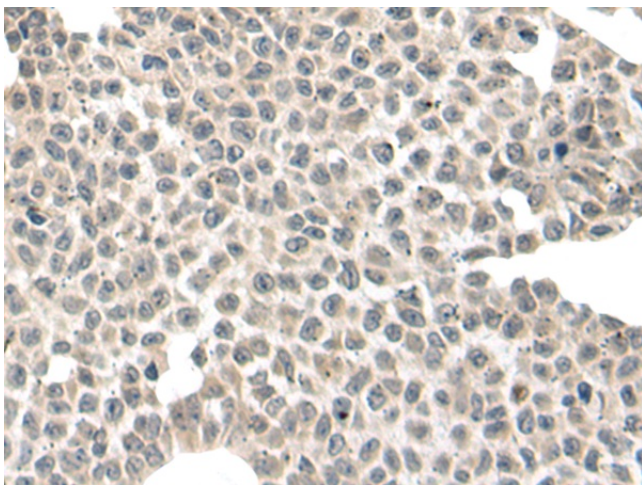
Exposure time: 5 seconds



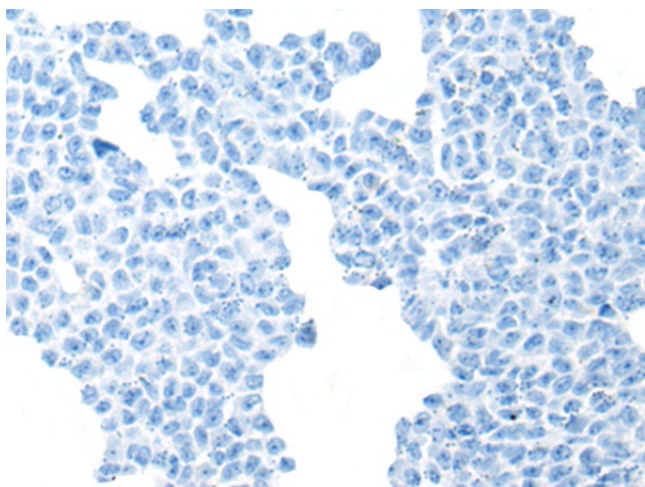
Immunohistochemistry of paraffin-embedded Human liver cancer tissue using [TA372318] (DYRK1A Antibody) at dilution 1/30 (Original magnification: x200)



Immunohistochemistry of paraffin-embedded Human liver cancer tissue using [TA372318] (DYRK1A Antibody) at dilution 1/30, treated with synthetic peptide. (Original magnification: x200)



Immunohistochemistry of paraffin-embedded Human ovarian cancer tissue using [TA372318] (DYRK1A Antibody) at dilution 1/30 (Original magnification: x200)



Immunohistochemistry of paraffin-embedded Human ovarian cancer tissue using [TA372318] (DYRK1A Antibody) at dilution 1/30, treated with synthetic peptide. (Original magnification:  $\times 200$ )