

## Product datasheet for **TA372308S**

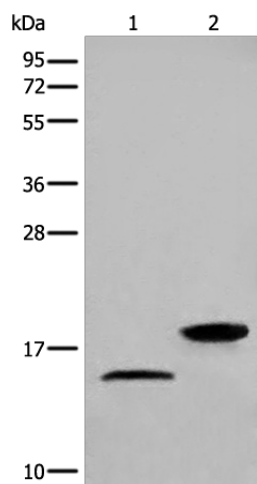
### LC3B (MAP1LC3B) Rabbit Polyclonal Antibody

#### Product data:

Product Type:	Primary Antibodies
Applications:	IHC, WB
Recommended Dilution:	WB: 200-1000 WB positive control: HEPG2 cell and Human fetal brain tissue lysates IHC: 20-100 Positive control: Human liver cancer Predicted cell location: Cytoplasm or Nucleus
Reactivity:	Human, Mouse, Rat
Host:	Rabbit
Isotype:	IgG
Clonality:	Polyclonal
Immunogen:	Synthetic peptide of human MAP1LC3B
Formulation:	pH7.4 PBS, 0.05% NaN <sub>3</sub> , 40% Glycerol
Concentration:	lot specific
Purification:	Antigen affinity purification
Conjugation:	Unconjugated
Storage:	Store at -20°C.
Stability:	1 year
Predicted Protein Size:	15 kDa
Gene Name:	microtubule associated protein 1 light chain 3 beta
Database Link:	<a href="#">Entrez Gene 81631 Human Q9GZQ8</a>
Background:	The product of this gene is a subunit of neuronal microtubule-associated MAP1A and MAP1B proteins, which are involved in microtubule assembly and important for neurogenesis. Studies on the rat homolog implicate a role for this gene in autophagy, a process that involves the bulk degradation of cytoplasmic component.
Synonyms:	LC3B; MAP1A/1BLC3; MAP1ALC3



[View online »](#)

**Product images:**

Gel: 12%SDS-PAGE

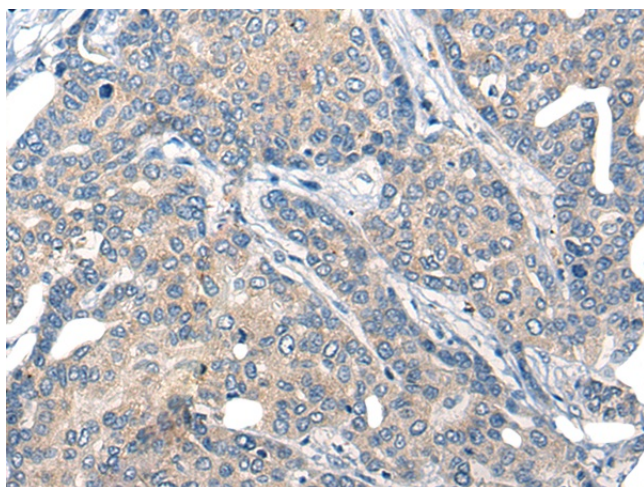
Lysate: 40  $\mu$ g

Lane 1-2: HEPG2 cell and Human fetal brain tissue lysates

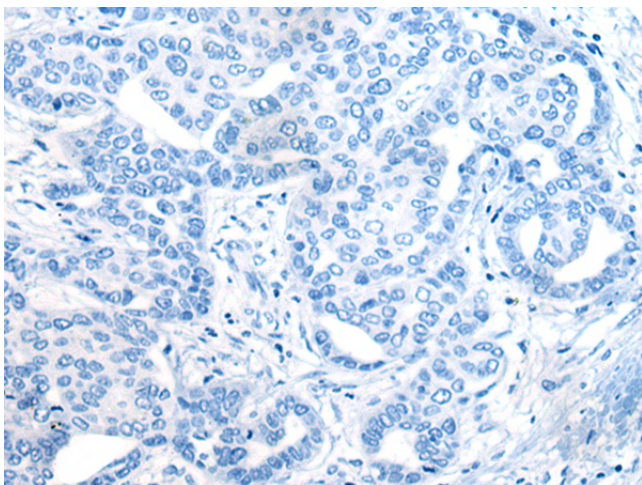
Primary antibody: [TA372308] (MAP1LC3B Antibody) at dilution 1/300

Secondary antibody: Goat anti rabbit IgG at 1/8000 dilution

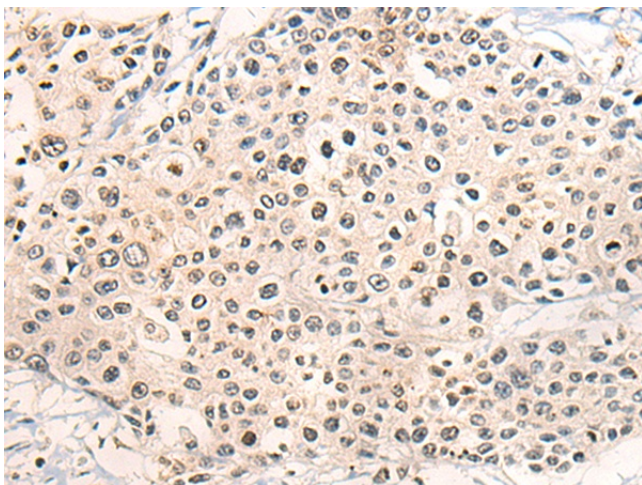
Exposure time: 5 seconds



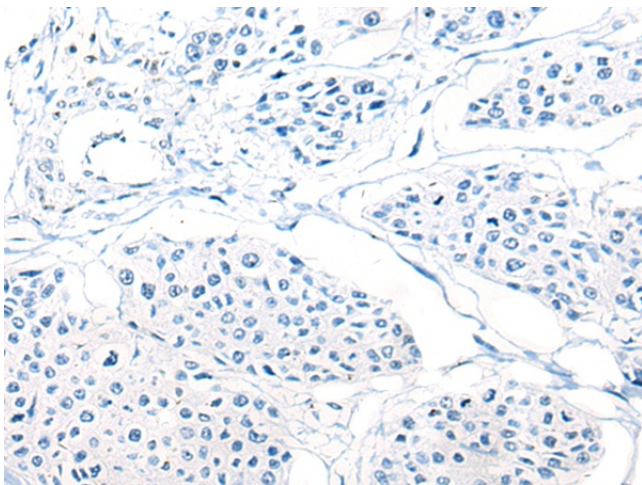
Immunohistochemistry of paraffin-embedded Human liver cancer tissue using [TA372308] (MAP1LC3B Antibody) at dilution 1/25 (Original magnification:  $\times$ 200)



Immunohistochemistry of paraffin-embedded Human liver cancer tissue using [TA372308] (MAP1LC3B Antibody) at dilution 1/25, treated with synthetic peptide. (Original magnification: x200)



Immunohistochemistry of paraffin-embedded Human prostate cancer tissue using [TA372308] (MAP1LC3B Antibody) at dilution 1/25 (Original magnification: x200)



Immunohistochemistry of paraffin-embedded Human prostate cancer tissue using [TA372308] (MAP1LC3B Antibody) at dilution 1/25, treated with synthetic peptide. (Original magnification: x200)