

Product datasheet for **TA372307S**

NCBP1 Rabbit Polyclonal Antibody

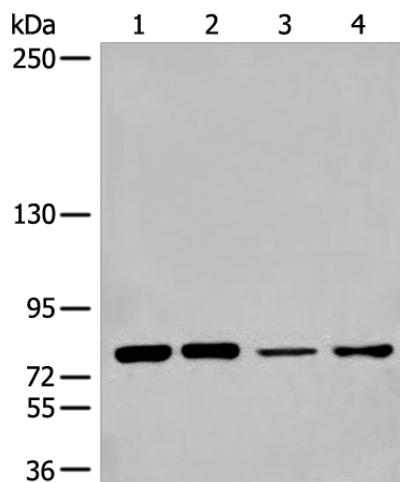
Product data:

Product Type:	Primary Antibodies
Applications:	WB
Recommended Dilution:	WB: 200-1000 WB positive control: HEPG2 HT-29 HeLa and 293T cell lysates
Reactivity:	Human, Mouse, Rat
Host:	Rabbit
Isotype:	IgG
Clonality:	Polyclonal
Immunogen:	Synthetic peptide of human NCBP1
Formulation:	pH7.4 PBS, 0.05% NaN ₃ , 40% Glycerol
Concentration:	lot specific
Purification:	Antigen affinity purification
Conjugation:	Unconjugated
Storage:	Store at -20°C.
Stability:	1 year
Predicted Protein Size:	92 kDa
Gene Name:	nuclear cap binding protein subunit 1
Database Link:	Entrez Gene 4686 Human Q09161
Background:	The product of this gene is a component of the nuclear cap-binding protein complex (CBC), which binds to the monomethylated 5' cap of nascent pre-mRNA in the nucleoplasm. The encoded protein promotes high-affinity mRNA-cap binding and associates with the CTD of RNA polymerase II. The CBC promotes pre-mRNA splicing, 3'-end processing, RNA nuclear export, and nonsense-mediated mRNA decay.
Synonyms:	CBP80; MGC2087; NCBP



[View online »](#)

Product images:



Gel: 6%SDS-PAGE
Lysate: 40 μ g
Lane 1-4: HEPG2
HT-29
Hela and 293T cell lysates
Primary antibody: [TA372307] (NCBP1 Antibody)
at dilution 1/200
Secondary antibody: Goat anti rabbit IgG at
1/8000 dilution
Exposure time: 20 seconds