

Product datasheet for **TA372304S**

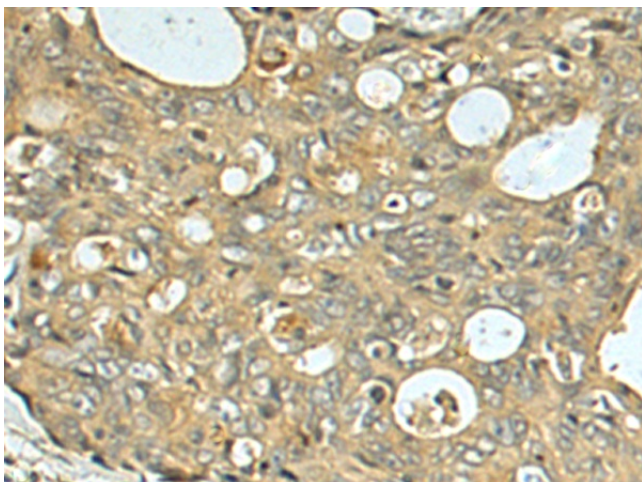
NAT8L Rabbit Polyclonal Antibody

Product data:

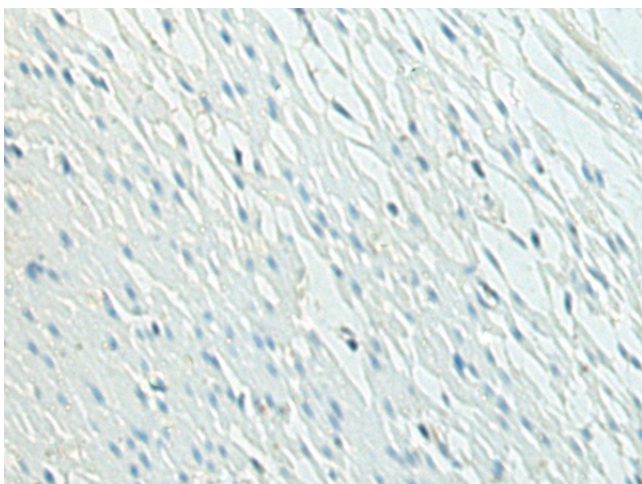
Product Type:	Primary Antibodies
Applications:	IHC
Recommended Dilution:	IHC: 50-200 Positive control: Human colorectal cancer Predicted cell location: Cytoplasm
Reactivity:	Human, Mouse, Rat
Host:	Rabbit
Isotype:	IgG
Clonality:	Polyclonal
Immunogen:	Synthetic peptide of human NAT8L
Formulation:	pH7.4 PBS, 0.05% NaN ₃ , 40% Glycerol
Concentration:	lot specific
Purification:	Antigen affinity purification
Conjugation:	Unconjugated
Storage:	Store at -20°C.
Stability:	1 year
Gene Name:	N-acetyltransferase 8 like
Database Link:	Entrez Gene 339983 Human Q8N9F0
Background:	This gene encodes a single-pass membrane protein, which contains a conserved sequence of the GCN5 or NAT superfamily of N-acetyltransferases and is a member of the N-acetyltransferase (NAT) superfamily. This protein is a neuron-specific protein and is the N-acetylaspertate (NAA) biosynthetic enzyme, catalyzing the NAA synthesis from L-aspartate and acetyl-CoA. NAA is a major storage and transport form of acetyl coenzyme A specific to the nervous system. The gene mutation results in primary NAA deficiency (hypoacetylaspartia).
Synonyms:	CML3; FLJ37478; Hcml3; MGC117272; NAT8-LIKE



[View online »](#)

Product images:

Immunohistochemistry of paraffin-embedded Human colorectal cancer using [TA372304] (NAT8L Antibody) at dilution 1/60 (Original magnification: $\times 200$)



Immunohistochemistry of paraffin-embedded Human colorectal cancer using [TA372304] (NAT8L Antibody) at dilution 1/60, treated with synthetic peptide. (Original magnification: $\times 200$)