

Product datasheet for **TA372293S**

CHFR Rabbit Polyclonal Antibody

Product data:

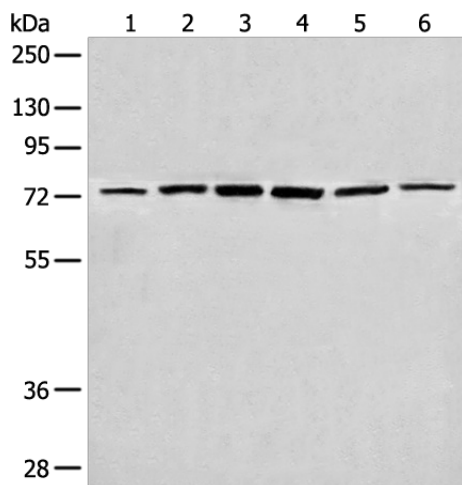
Product Type:	Primary Antibodies
Applications:	IHC, WB
Recommended Dilution:	WB: 200-1000 WB positive control: Hela, Jurkat, A549, HepG2, 293T and 231 cell lysates IHC: 20-100 Positive control: Human ovarian cancer Predicted cell location: Nucleus
Reactivity:	Human
Host:	Rabbit
Isotype:	IgG
Clonality:	Polyclonal
Immunogen:	Synthetic peptide of human CHFR
Formulation:	pH7.4 PBS, 0.05% NaN ₃ , 40% Glycerol
Concentration:	lot specific
Purification:	Antigen affinity purification
Conjugation:	Unconjugated
Storage:	Store at -20°C.
Stability:	1 year
Predicted Protein Size:	73 kDa
Gene Name:	checkpoint with forkhead and ring finger domains, E3 ubiquitin protein ligase
Database Link:	Entrez Gene 55743 Human Q96EP1
Background:	This gene encodes an E3 ubiquitin-protein ligase required for the maintenance of the antephasis checkpoint that regulates cell cycle entry into mitosis and, therefore, may play a key role in cell cycle progression and tumorigenesis. The encoded protein has an N-terminal forkhead-associated domain, a central RING-finger domain, and a cysteine-rich C-terminal region. Alternatively spliced transcript variants that encode different protein isoforms have been described.



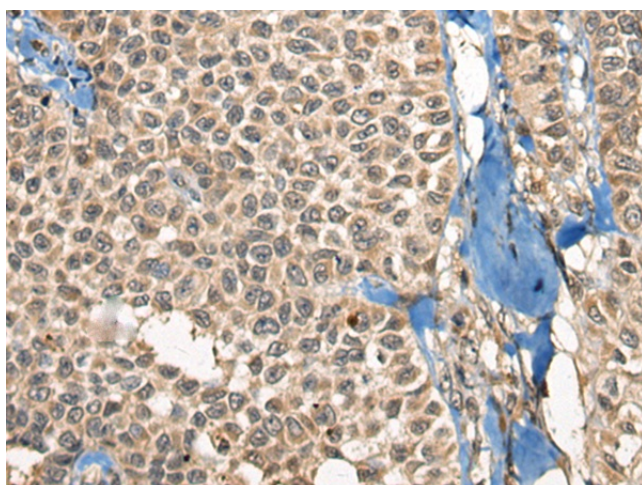
[View online »](#)

Synonyms: FLJ10796; FLJ33629; RNF116; RNF196

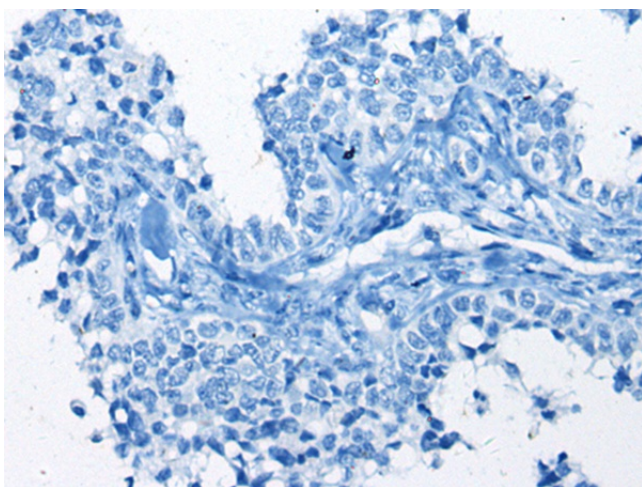
Product images:



Gel: 8%SDS-PAGE
 Lysate: 40 µg
 Lane 1-6: HeLa
 Jurkat
 A549
 HepG2
 293T and 231 cell lysates
 Primary antibody: [TA372293] (CHFR Antibody) at dilution 1/300
 Secondary antibody: Goat anti rabbit IgG at 1/8000 dilution
 Exposure time: 10 seconds



Immunohistochemistry of paraffin-embedded Human ovarian cancer tissue using [TA372293] (CHFR Antibody) at dilution 1/20 (Original magnification: ×200)



Immunohistochemistry of paraffin-embedded Human ovarian cancer tissue using [TA372293] (CHFR Antibody) at dilution 1/20, treated with synthetic peptide. (Original magnification: $\times 200$)