

## Product datasheet for **TA372283S**

### ALDH7A1 Rabbit Polyclonal Antibody

#### Product data:

Product Type:	Primary Antibodies
Applications:	IHC, WB
Recommended Dilution:	WB: 200-1000 WB positive control: Rat liver tissue, A172 and HepG2 cell, Mouse liver tissue, Hela cell, Human liver tissue and Human fetal liver tissue lysates IHC: 20-100 Positive control: Human liver cancer Predicted cell location: Cytoplasm
Reactivity:	Human, Mouse, Rat
Host:	Rabbit
Isotype:	IgG
Clonality:	Polyclonal
Immunogen:	Synthetic peptide of human ALDH7A1
Formulation:	pH7.4 PBS, 0.05% NaN <sub>3</sub> , 40% Glycerol
Concentration:	lot specific
Purification:	Antigen affinity purification
Conjugation:	Unconjugated
Storage:	Store at -20°C.
Stability:	1 year
Predicted Protein Size:	59 kDa
Gene Name:	aldehyde dehydrogenase 7 family member A1
Database Link:	<a href="#">Entrez Gene 501 Human P49419</a>



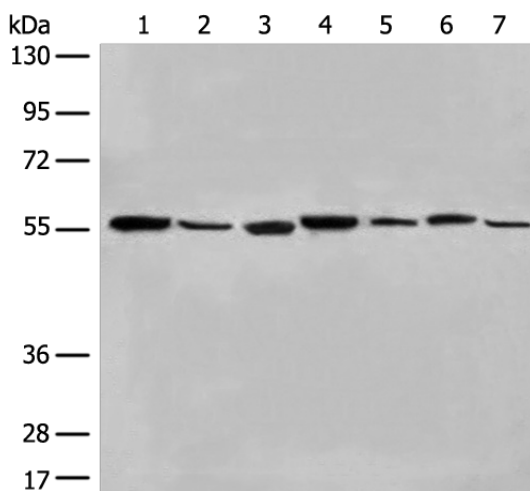
[View online »](#)

**Background:**

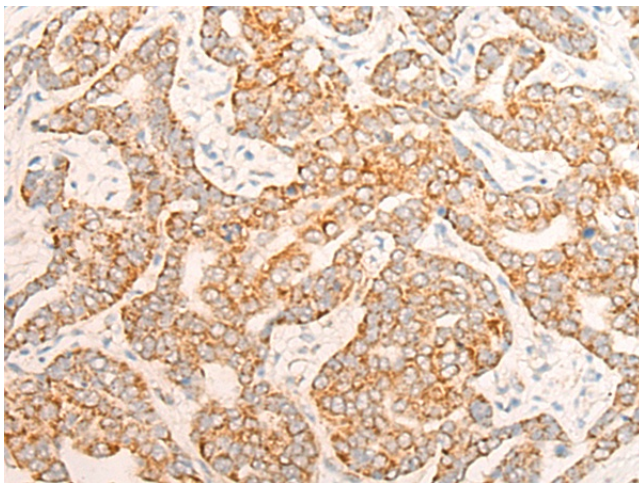
The protein encoded by this gene is a member of subfamily 7 in the aldehyde dehydrogenase gene family. These enzymes are thought to play a major role in the detoxification of aldehydes generated by alcohol metabolism and lipid peroxidation. This particular member has homology to a previously described protein from the green garden pea, the 26g pea turgor protein. It is also involved in lysine catabolism that is known to occur in the mitochondrial matrix. Recent reports show that this protein is found both in the cytosol and the mitochondria, and the two forms likely arise from the use of alternative translation initiation sites. An additional variant encoding a different isoform has also been found for this gene. Mutations in this gene are associated with pyridoxine-dependent epilepsy. Several related pseudogenes have also been identified.

**Synonyms:**

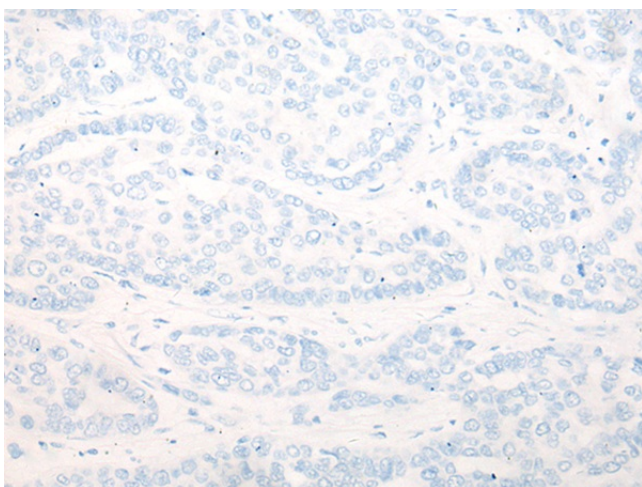
Antiquitin-1; ATQ1; EPD; FLJ11738; FLJ92814; PDE

**Product images:**


Gel: 8%SDS-PAGE  
 Lysate: 40 µg  
 Lane 1-7: Rat liver tissue  
 A172 and HepG2 cell  
 Mouse liver tissue  
 HeLa cell  
 Human liver tissue and Human fetal liver tissue  
 lysates  
 Primary antibody: [TA372283] (ALDH7A1  
 Antibody) at dilution 1/250  
 Secondary antibody: Goat anti rabbit IgG at  
 1/8000 dilution  
 Exposure time: 5 seconds



Immunohistochemistry of paraffin-embedded  
 Human liver cancer tissue using [TA372283]  
 (ALDH7A1 Antibody) at dilution 1/20 (Original  
 magnification: ×200)



Immunohistochemistry of paraffin-embedded Human liver cancer tissue using [TA372283] (ALDH7A1 Antibody) at dilution 1/20, treated with synthetic peptide. (Original magnification: ×200)