

Product datasheet for **TA372270S**

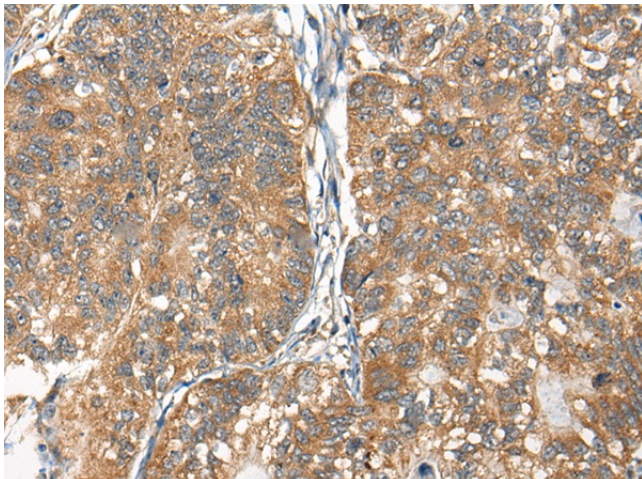
RTN4IP1 Rabbit Polyclonal Antibody

Product data:

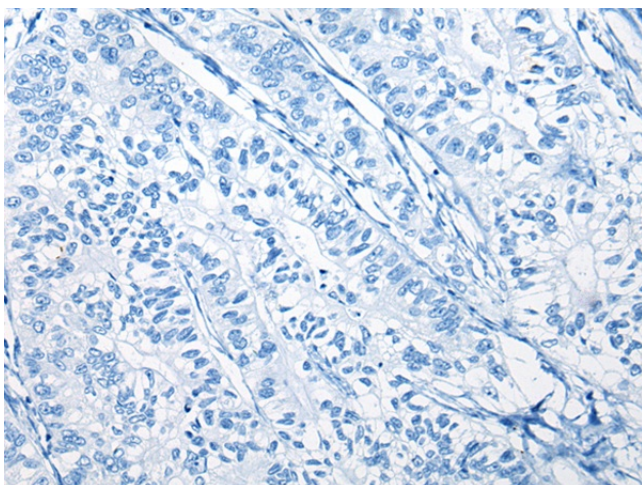
Product Type:	Primary Antibodies
Applications:	IHC
Recommended Dilution:	IHC: 25-100 Positive control: Human gastric cancer Predicted cell location: Cytoplasm
Reactivity:	Human, Mouse
Host:	Rabbit
Isotype:	IgG
Clonality:	Polyclonal
Immunogen:	Synthetic peptide of human RTN4IP1
Formulation:	pH7.4 PBS, 0.05% NaN ₃ , 40% Glycerol
Concentration:	lot specific
Purification:	Antigen affinity purification
Conjugation:	Unconjugated
Storage:	Store at -20°C.
Stability:	1 year
Gene Name:	reticulon 4 interacting protein 1
Database Link:	Entrez Gene 84816 Human Q8WWV3
Background:	This gene encodes a mitochondrial protein that interacts with reticulon 4, which is a potent inhibitor of regeneration following spinal cord injury. This interaction may be important for reticulon-induced inhibition of neurite growth. Mutations in this gene can cause optic atrophy 10, with or without ataxia, mental retardation, and seizures. There is a pseudogene for this gene on chromosome 12. Alternative splicing results in multiple transcript variants.
Synonyms:	MGC12934; NIMP



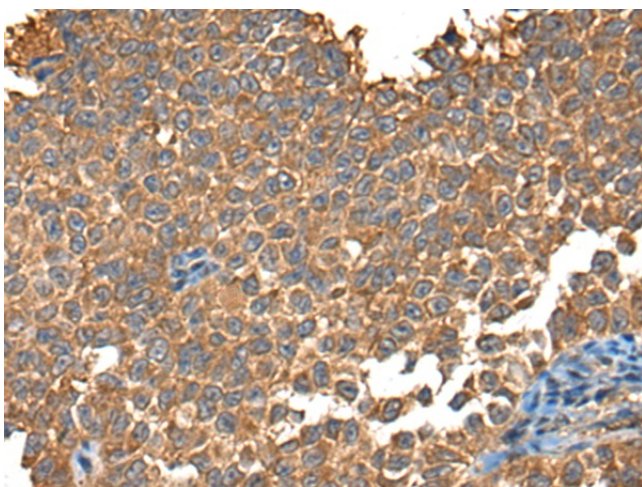
[View online »](#)

Product images:

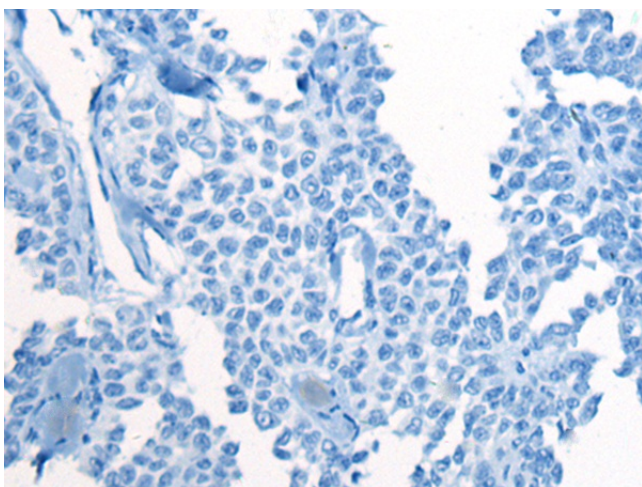
Immunohistochemistry of paraffin-embedded Human gastric cancer tissue using [TA372270] (RTN4IP1 Antibody) at dilution 1/25 (Original magnification: $\times 200$)



Immunohistochemistry of paraffin-embedded Human gastric cancer tissue using [TA372270] (RTN4IP1 Antibody) at dilution 1/25, treated with synthetic peptide. (Original magnification: $\times 200$)



Immunohistochemistry of paraffin-embedded Human ovarian cancer tissue using [TA372270] (RTN4IP1 Antibody) at dilution 1/25 (Original magnification: $\times 200$)



Immunohistochemistry of paraffin-embedded Human ovarian cancer tissue using [TA372270] (RTN4IP1 Antibody) at dilution 1/25, treated with synthetic peptide. (Original magnification: $\times 200$)