

## Product datasheet for **TA372270**

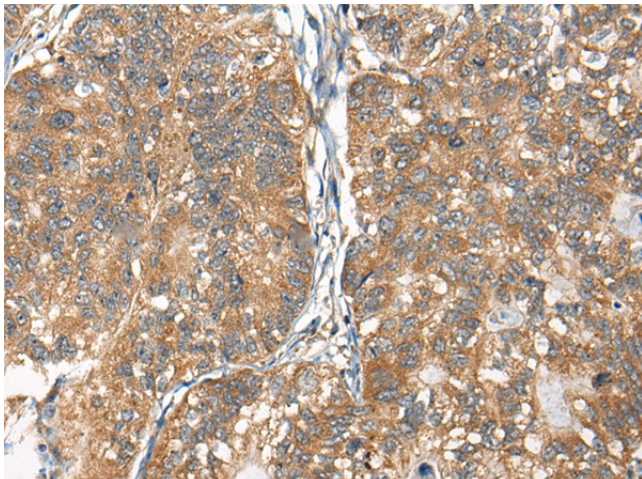
### RTN4IP1 Rabbit Polyclonal Antibody

#### Product data:

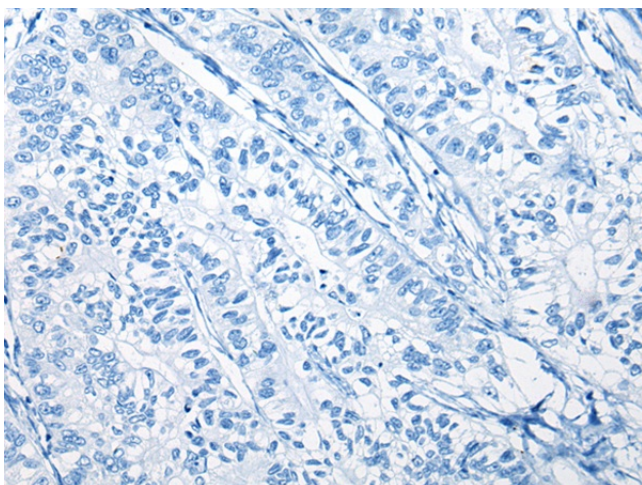
Product Type:	Primary Antibodies
Applications:	IHC
Recommended Dilution:	IHC: 25-100 Positive control: Human gastric cancer Predicted cell location: Cytoplasm
Reactivity:	Human, Mouse
Host:	Rabbit
Isotype:	IgG
Clonality:	Polyclonal
Immunogen:	Synthetic peptide of human RTN4IP1
Formulation:	pH7.4 PBS, 0.05% NaN <sub>3</sub> , 40% Glycerol
Concentration:	lot specific
Purification:	Antigen affinity purification
Conjugation:	Unconjugated
Storage:	Store at -20°C.
Stability:	1 year
Gene Name:	reticulon 4 interacting protein 1
Database Link:	<a href="#">Entrez Gene 84816 Human Q8WWV3</a>
Background:	This gene encodes a mitochondrial protein that interacts with reticulon 4, which is a potent inhibitor of regeneration following spinal cord injury. This interaction may be important for reticulon-induced inhibition of neurite growth. Mutations in this gene can cause optic atrophy 10, with or without ataxia, mental retardation, and seizures. There is a pseudogene for this gene on chromosome 12. Alternative splicing results in multiple transcript variants.
Synonyms:	MGC12934; NIMP



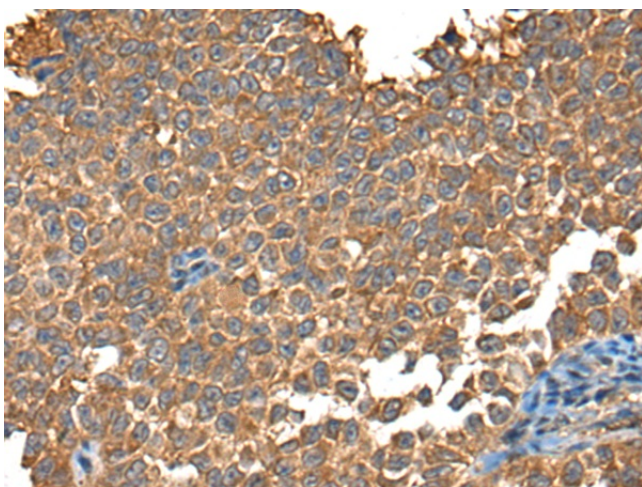
[View online »](#)

**Product images:**

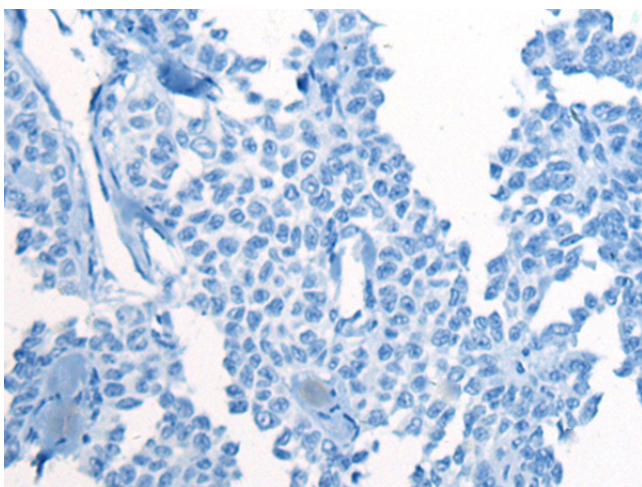
Immunohistochemistry of paraffin-embedded Human gastric cancer tissue using TA372270 (RTN4IP1 Antibody) at dilution 1/25 (Original magnification:  $\times 200$ )



Immunohistochemistry of paraffin-embedded Human gastric cancer tissue using TA372270 (RTN4IP1 Antibody) at dilution 1/25, treated with synthetic peptide. (Original magnification:  $\times 200$ )



Immunohistochemistry of paraffin-embedded Human ovarian cancer tissue using TA372270 (RTN4IP1 Antibody) at dilution 1/25 (Original magnification:  $\times 200$ )



Immunohistochemistry of paraffin-embedded Human ovarian cancer tissue using TA372270 (RTN4IP1 Antibody) at dilution 1/25, treated with synthetic peptide. (Original magnification:  $\times 200$ )