

Product datasheet for **TA372256S**

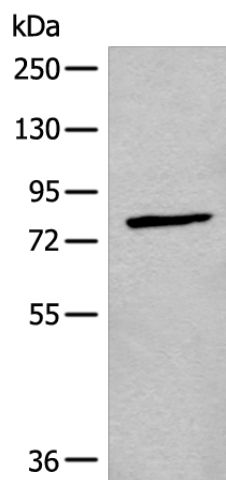
CNG3 (CNGA3) Rabbit Polyclonal Antibody

Product data:

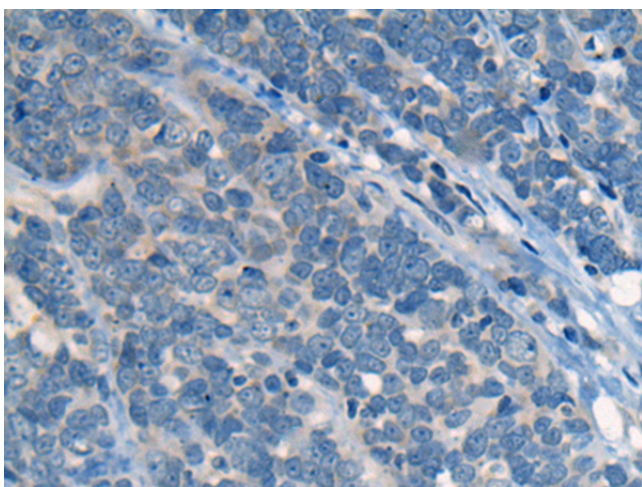
Product Type:	Primary Antibodies
Applications:	IHC, WB
Recommended Dilution:	WB: 200-1000 WB positive control: 293T cell lysate IHC: 10-50 Positive control: Human thyroid cancer Predicted cell location: Cell membrane
Reactivity:	Human
Host:	Rabbit
Isotype:	IgG
Clonality:	Polyclonal
Immunogen:	Synthetic peptide of human CNGA3
Formulation:	pH7.4 PBS, 0.05% NaN ₃ , 40% Glycerol
Concentration:	lot specific
Purification:	Antigen affinity purification
Conjugation:	Unconjugated
Storage:	Store at -20°C.
Stability:	1 year
Predicted Protein Size:	79 kDa
Gene Name:	cyclic nucleotide gated channel alpha 3
Database Link:	Entrez Gene 1261 Human Q16281
Background:	This gene encodes a member of the cyclic nucleotide-gated cation channel protein family which is required for normal vision and olfactory signal transduction. Mutations in this gene are associated with achromatopsia (rod monochromacy) and color blindness. Two alternatively spliced transcripts encoding different isoforms have been described.
Synonyms:	ACHM2; CCNC1; CCNCa; CCNCalpha; CNGG3; CNG-3; CNG3; OTTHUMP00000161120



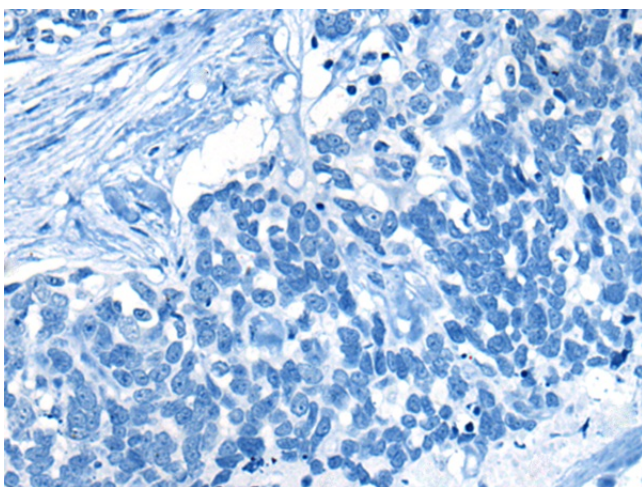
[View online »](#)

Product images:

Gel: 6%SDS-PAGE
Lysate: 40 μ g
Lane: 293T cell lysate
Primary antibody: [TA372256] (CNGA3 Antibody) at dilution 1/300
Secondary antibody: Goat anti rabbit IgG at 1/8000 dilution
Exposure time: 1 minute



Immunohistochemistry of paraffin-embedded Human thyroid cancer tissue using [TA372256] (CNGA3 Antibody) at dilution 1/25 (Original magnification: \times 200)



Immunohistochemistry of paraffin-embedded Human thyroid cancer tissue using [TA372256] (CNGA3 Antibody) at dilution 1/25, treated with synthetic peptide. (Original magnification: ×200)