

## Product datasheet for TA372256

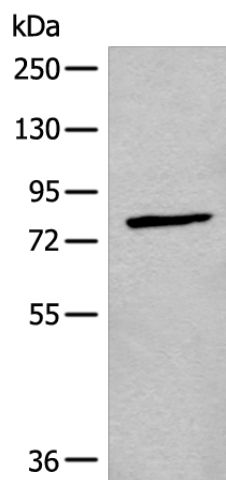
### CNG3 (CNGA3) Rabbit Polyclonal Antibody

#### Product data:

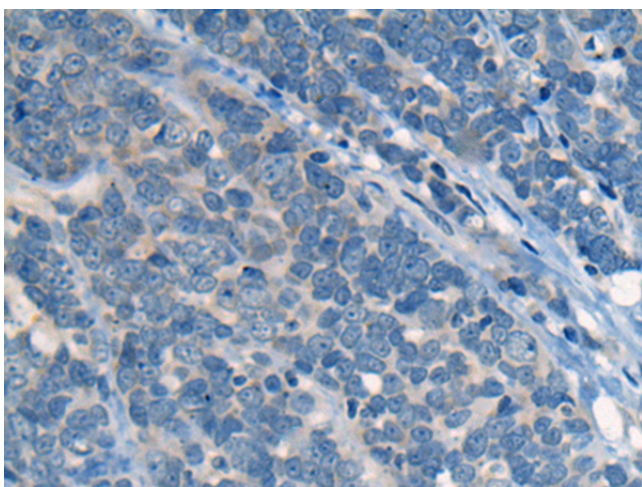
|                         |  |
|-------------------------|--|
| Product Type:           | Primary Antibodies   |
| Applications:           | IHC, WB  |
| Recommended Dilution:   | WB: 200-1000<br>WB positive control: 293T cell lysate<br>IHC: 10-50<br>Positive control: Human thyroid cancer<br>Predicted cell location: Cell membrane  |
| Reactivity:             | Human  |
| Host:                   | Rabbit   |
| Isotype:                | IgG  |
| Clonality:              | Polyclonal   |
| Immunogen:              | Synthetic peptide of human CNGA3   |
| Formulation:            | pH7.4 PBS, 0.05% NaN <sub>3</sub> , 40% Glycerol   |
| Concentration:          | lot specific   |
| Purification:           | Antigen affinity purification  |
| Conjugation:            | Unconjugated   |
| Storage:                | Store at -20°C.  |
| Stability:              | 1 year   |
| Predicted Protein Size: | 79 kDa   |
| Gene Name:              | cyclic nucleotide gated channel alpha 3  |
| Database Link:          | <a href="#">Entrez Gene 1261 Human Q16281</a>  |
| Background:             | This gene encodes a member of the cyclic nucleotide-gated cation channel protein family which is required for normal vision and olfactory signal transduction. Mutations in this gene are associated with achromatopsia (rod monochromacy) and color blindness. Two alternatively spliced transcripts encoding different isoforms have been described. |
| Synonyms:               | ACHM2; CCNC1; CCNCa; CCNCalpha; CNGG3; CNG-3; CNG3; OTTHUMP00000161120   |



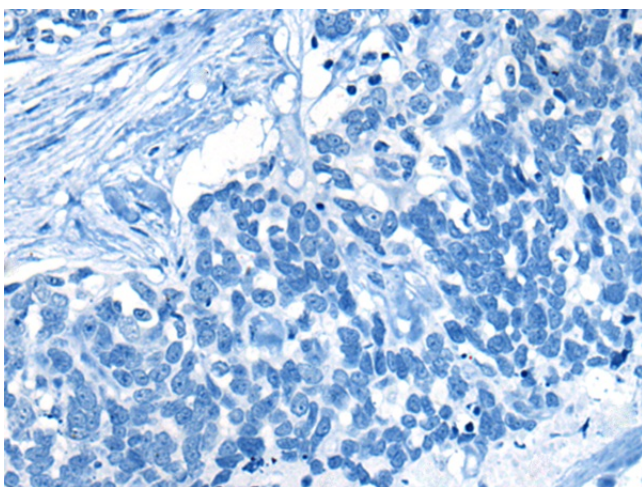
[View online »](#)

**Product images:**

Gel: 6%SDS-PAGE  
Lysate: 40  $\mu$ g  
Lane: 293T cell lysate  
Primary antibody: TA372256 (CNGA3 Antibody) at dilution 1/300  
Secondary antibody: Goat anti rabbit IgG at 1/8000 dilution  
Exposure time: 1 minute



Immunohistochemistry of paraffin-embedded Human thyroid cancer tissue using TA372256 (CNGA3 Antibody) at dilution 1/25 (Original magnification:  $\times$ 200)



Immunohistochemistry of paraffin-embedded Human thyroid cancer tissue using TA372256 (CNGA3 Antibody) at dilution 1/25, treated with synthetic peptide. (Original magnification: ×200)