

Product datasheet for **TA372249**

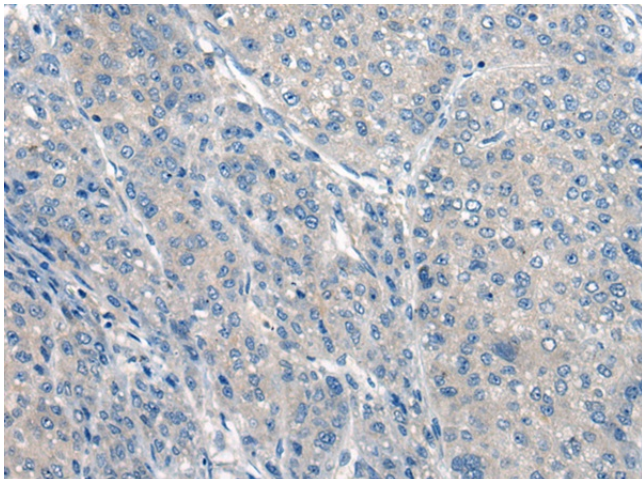
CLCNKA Rabbit Polyclonal Antibody

Product data:

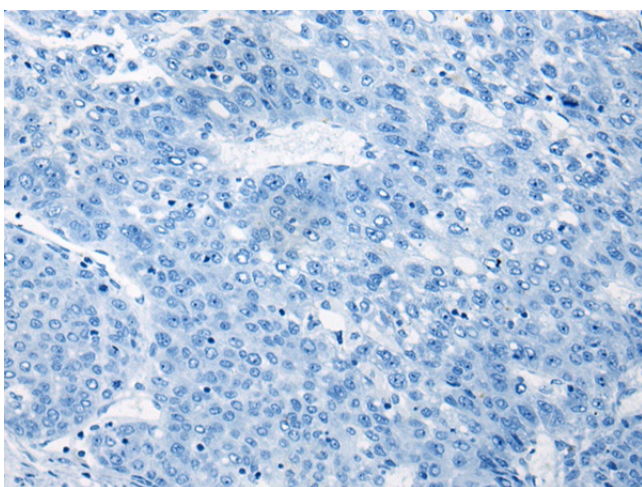
| | |
|-----------------------|--|
| Product Type: | Primary Antibodies |
| Applications: | IHC |
| Recommended Dilution: | IHC: 20-100 Positive control: Human liver cancer Predicted cell location: Cell membrane |
| Reactivity: | Human, Mouse |
| Host: | Rabbit |
| Isotype: | IgG |
| Clonality: | Polyclonal |
| Immunogen: | Synthetic peptide of human CLCNKA |
| Formulation: | pH7.4 PBS, 0.05% NaN ₃ , 40% Glycerol |
| Concentration: | lot specific |
| Purification: | Antigen affinity purification |
| Conjugation: | Unconjugated |
| Storage: | Store at -20°C. |
| Stability: | 1 year |
| Gene Name: | chloride voltage-gated channel Ka |
| Database Link: | Entrez Gene 1187 Human P51800 |
| Background: | This gene is a member of the CLC family of voltage-gated chloride channels. The encoded protein is predicted to have 12 transmembrane domains, and requires a beta subunit called barttin to form a functional channel. It is thought to function in salt reabsorption in the kidney and potassium recycling in the inner ear. The gene is highly similar to CLCNKB, which is located 10 kb downstream from this gene. Multiple transcript variants encoding different isoforms have been found for this gene. |
| Synonyms: | CLC-K1; CLCK1; hCIC-Ka; MGC61490; OTTHUMP00000011119 |



[View online »](#)

Product images:

Immunohistochemistry of paraffin-embedded Human liver cancer tissue using TA372249 (CLCNKA Antibody) at dilution 1/20 (Original magnification: $\times 200$)



Immunohistochemistry of paraffin-embedded Human liver cancer tissue using TA372249 (CLCNKA Antibody) at dilution 1/20, treated with synthetic peptide. (Original magnification: $\times 200$)