

## Product datasheet for **TA372247**

### Class A basic helix loop helix protein 9 (BHLHA9) Rabbit Polyclonal Antibody

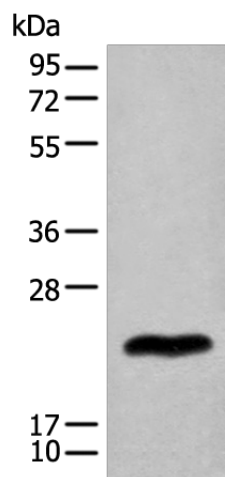
#### Product data:

Product Type:	Primary Antibodies
Applications:	WB
Recommended Dilution:	WB: 200-1000 WB positive control: Mouse eye tissue lysate
Reactivity:	Human, Mouse
Host:	Rabbit
Isotype:	IgG
Clonality:	Polyclonal
Immunogen:	Synthetic peptide of human BHLHA9
Formulation:	pH7.4 PBS, 0.05% NaN <sub>3</sub> , 40% Glycerol
Concentration:	lot specific
Purification:	Antigen affinity purification
Conjugation:	Unconjugated
Storage:	Store at -20°C.
Stability:	1 year
Predicted Protein Size:	24 kDa
Gene Name:	basic helix-loop-helix family member a9
Database Link:	<a href="#">Entrez Gene 727857 Human Q7RTU4</a>
Background:	This gene is a member of the basic helix-loop-helix family. The encoded protein is a transcription factor involved in limb development. Mutations in this gene have been associated with mesoaxial synostotic syndactyly Malik-Percin type (MSSD). Copy number variation of a locus containing this gene has been linked to a form of split-hand/foot malformation with long bone deficiency (SHFLD3).
Synonyms:	BHLHF42



[View online »](#)

## Product images:



Gel: 12%SDS-PAGE

Lysate: 40  $\mu$ g

Lane: Mouse eye tissue lysate

Primary antibody: TA372247 (BHLHA9 Antibody)  
at dilution 1/200

Secondary antibody: Goat anti rabbit IgG at  
1/8000 dilution

Exposure time: 40 seconds