

Product datasheet for **TA372242S**

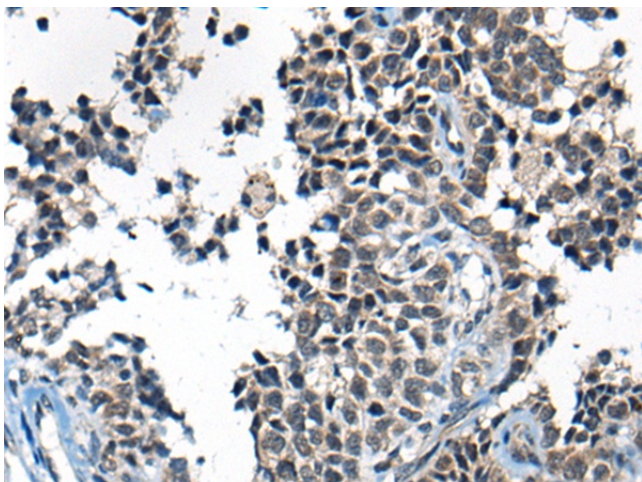
CITED2 Rabbit Polyclonal Antibody

Product data:

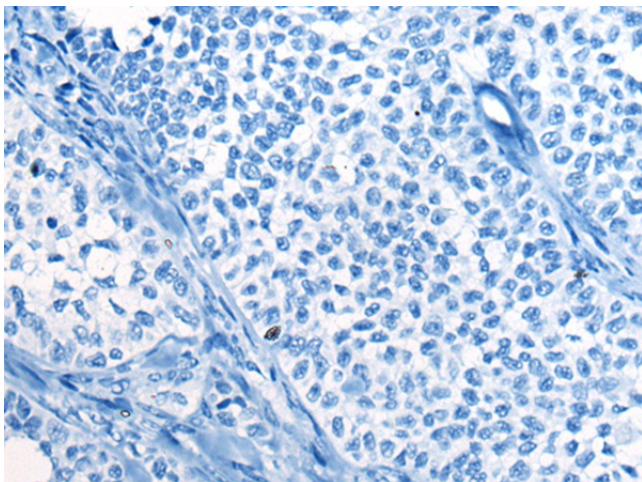
Product Type:	Primary Antibodies
Applications:	IHC
Recommended Dilution:	IHC: 25-100 Positive control: Human ovarian cancer Predicted cell location: Nucleus
Reactivity:	Human, Mouse
Host:	Rabbit
Isotype:	IgG
Clonality:	Polyclonal
Immunogen:	Synthetic peptide of human CITED2
Formulation:	pH7.4 PBS, 0.05% NaN ₃ , 40% Glycerol
Concentration:	lot specific
Purification:	Antigen affinity purification
Conjugation:	Unconjugated
Storage:	Store at -20°C.
Stability:	1 year
Gene Name:	Cbp/p300 interacting transactivator with Glu/Asp rich carboxy-terminal domain 2
Database Link:	Entrez Gene 10370 Human Q99967
Background:	The protein encoded by this gene inhibits transactivation of HIF1A-induced genes by competing with binding of hypoxia-inducible factor 1-alpha to p300-CH1. Mutations in this gene are a cause of cardiac septal defects. Alternatively spliced transcript variants encoding multiple isoforms have been observed for this gene.
Synonyms:	MRG-1; MRG1; P35SRJ



[View online »](#)

Product images:

Immunohistochemistry of paraffin-embedded Human ovarian cancer tissue using [TA372242] (CITED2 Antibody) at dilution 1/40 (Original magnification: $\times 200$)



Immunohistochemistry of paraffin-embedded Human ovarian cancer tissue using [TA372242] (CITED2 Antibody) at dilution 1/40, treated with synthetic peptide. (Original magnification: $\times 200$)