

Product datasheet for **TA372241**

CITED1 Rabbit Polyclonal Antibody

Product data:

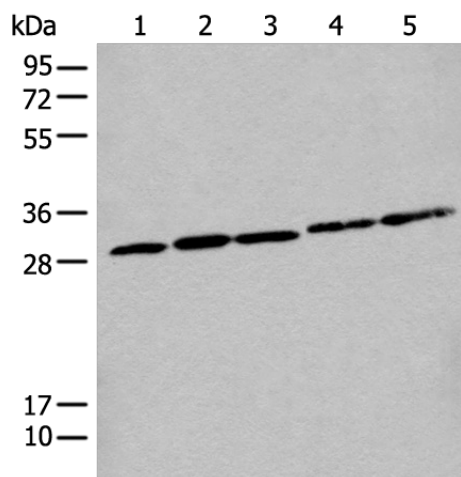
Product Type:	Primary Antibodies
Applications:	IHC, WB
Recommended Dilution:	WB: 200-1000 WB positive control: A375 cell□Human testis tissue□A172 and A431 cell□Human fetal liver tissue lysates IHC: 30-150 Positive control: Human esophagus cancer Predicted cell location: Cytoplasm and Nucleus
Reactivity:	Human, Mouse
Host:	Rabbit
Isotype:	IgG
Clonality:	Polyclonal
Immunogen:	Synthetic peptide of human CITED1
Formulation:	pH7.4 PBS, 0.05% NaN ₃ , 40% Glycerol
Concentration:	lot specific
Purification:	Antigen affinity purification
Conjugation:	Unconjugated
Storage:	Store at -20°C.
Stability:	1 year
Predicted Protein Size:	20 kDa
Gene Name:	Cbp/p300 interacting transactivator with Glu/Asp rich carboxy-terminal domain 1
Database Link:	Entrez Gene 4435 Human Q99966
Background:	This gene encodes a member of the CREB-binding protein/p300-interacting transactivator with Asp/Glu-rich C-terminal domain (CITED) family of proteins. The encoded protein, also known as melanocyte-specific gene 1, may function as a transcriptional coactivator and may play a role in pigmentation of melanocytes. Alternatively spliced transcript variants have been described.



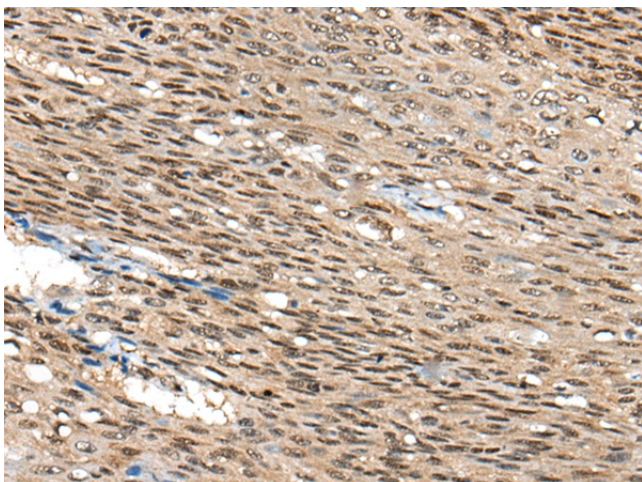
[View online »](#)

Synonyms: MSG1

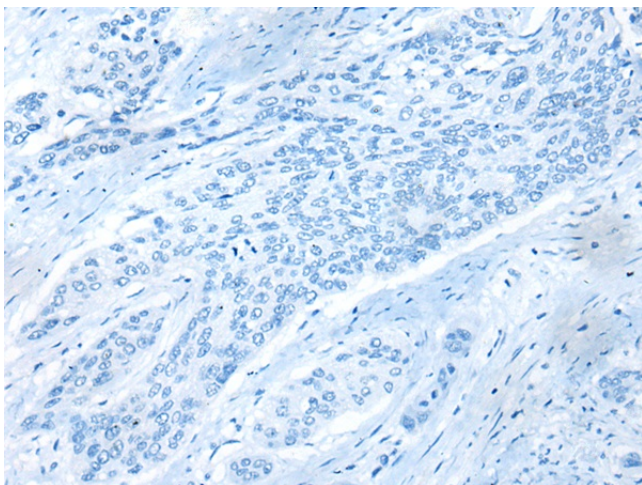
Product images:



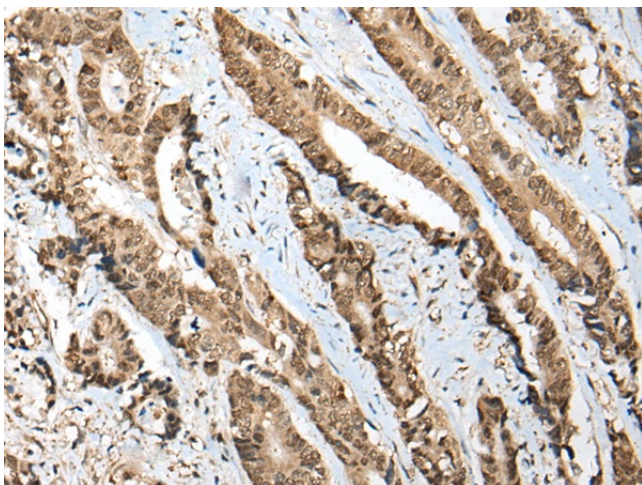
Gel: 12%SDS-PAGE
Lysate: 40 μ g
Lane 1-5: A375 cell
Human testis tissue
A172 and A431 cell
Human fetal liver tissue lysates
Primary antibody: TA372241 (CITED1 Antibody) at dilution 1/300
Secondary antibody: Goat anti rabbit IgG at 1/8000 dilution
Exposure time: 10 seconds



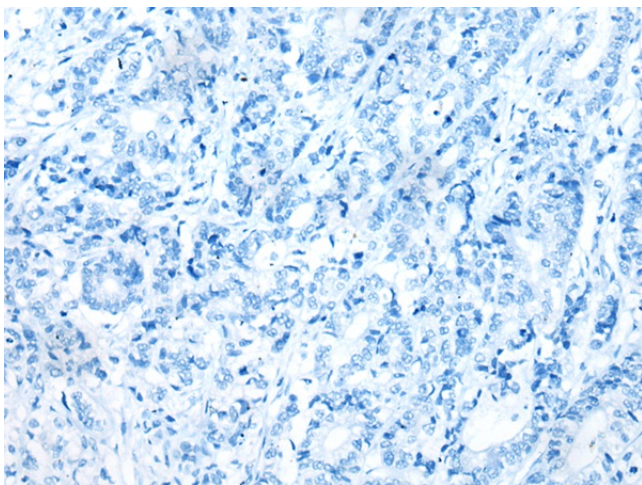
Immunohistochemistry of paraffin-embedded Human esophagus cancer tissue using TA372241 (CITED1 Antibody) at dilution 1/45 (Original magnification: \times 200)



Immunohistochemistry of paraffin-embedded Human esophagus cancer tissue using TA372241 (CITED1 Antibody) at dilution 1/45, treated with synthetic peptide. (Original magnification: ×200)



Immunohistochemistry of paraffin-embedded Human thyroid cancer tissue using TA372241 (CITED1 Antibody) at dilution 1/45 (Original magnification: ×200)



Immunohistochemistry of paraffin-embedded Human thyroid cancer tissue using TA372241 (CITED1 Antibody) at dilution 1/45, treated with synthetic peptide. (Original magnification: ×200)