

## Product datasheet for **TA372236S**

### CHST2 Rabbit Polyclonal Antibody

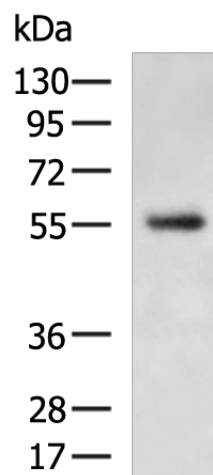
#### Product data:

Product Type:	Primary Antibodies
Applications:	IHC, WB
Recommended Dilution:	WB: 200-1000 WB positive control: Human placenta tissue lysate IHC: 50-100 Positive control: Human liver cancer Predicted cell location: Cytoplasm
Reactivity:	Human, Mouse
Host:	Rabbit
Isotype:	IgG
Clonality:	Polyclonal
Immunogen:	Synthetic peptide of human CHST2
Formulation:	pH7.4 PBS, 0.05% NaN <sub>3</sub> , 40% Glycerol
Concentration:	lot specific
Purification:	Antigen affinity purification
Conjugation:	Unconjugated
Storage:	Store at -20°C.
Stability:	1 year
Predicted Protein Size:	58 kDa
Gene Name:	carbohydrate sulfotransferase 2
Database Link:	<a href="#">Entrez Gene 9435 Human Q9Y4C5</a>
Background:	This locus encodes a sulfotransferase protein. The encoded enzyme catalyzes the sulfation of a nonreducing N-acetylglucosamine residue, and may play a role in biosynthesis of 6-sulfosialyl Lewis X antigen.
Synonyms:	C6ST; GlcNAc6ST-1; Gn6ST; GST-2; GST2

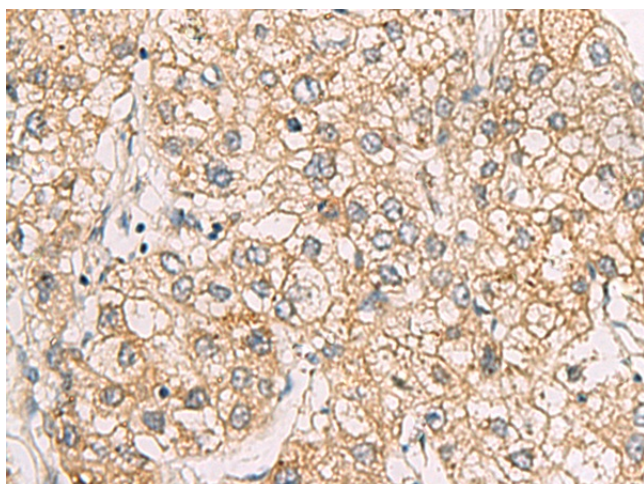


[View online »](#)

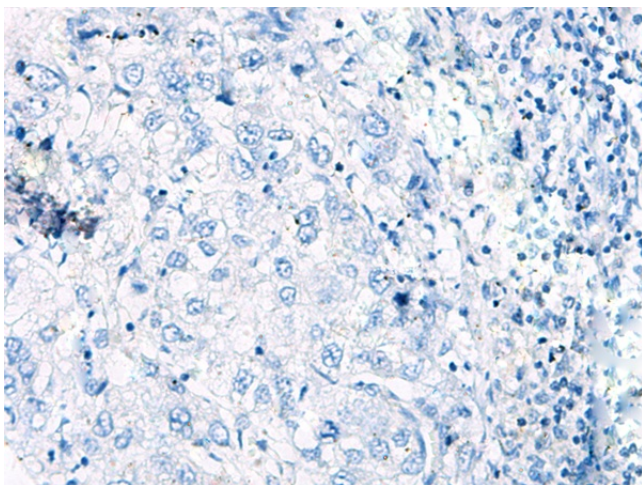
## Product images:



Gel: 8%SDS-PAGE  
Lysate: 40  $\mu$ g  
Lane: Human placenta tissue lysate  
Primary antibody: [TA372236] (CHST2 Antibody) at dilution 1/200  
Secondary antibody: Goat anti rabbit IgG at 1/5000 dilution  
Exposure time: 3 minutes



Immunohistochemistry of paraffin-embedded Human liver cancer tissue using [TA372236] (CHST2 Antibody) at dilution 1/30 (Original magnification:  $\times$ 200)



Immunohistochemistry of paraffin-embedded Human liver cancer tissue using [TA372236] (CHST2 Antibody) at dilution 1/30, treated with synthetic peptide. (Original magnification:  $\times 200$ )