

## Product datasheet for **TA372228S**

### Cezanne (OTUD7B) Rabbit Polyclonal Antibody

#### Product data:

Product Type:	Primary Antibodies
Applications:	IHC
Recommended Dilution:	IHC: 20-100 Positive control: Human liver cancer Predicted cell location: Cytoplasm
Reactivity:	Human, Mouse
Host:	Rabbit
Isotype:	IgG
Clonality:	Polyclonal
Immunogen:	Synthetic peptide of human OTUD7B
Formulation:	pH7.4 PBS, 0.05% NaN <sub>3</sub> , 40% Glycerol
Concentration:	lot specific
Purification:	Antigen affinity purification
Conjugation:	Unconjugated
Storage:	Store at -20°C.
Stability:	1 year
Gene Name:	OTU deubiquitinase 7B
Database Link:	<a href="#">Entrez Gene 56957 Human Q6GQQ9</a>



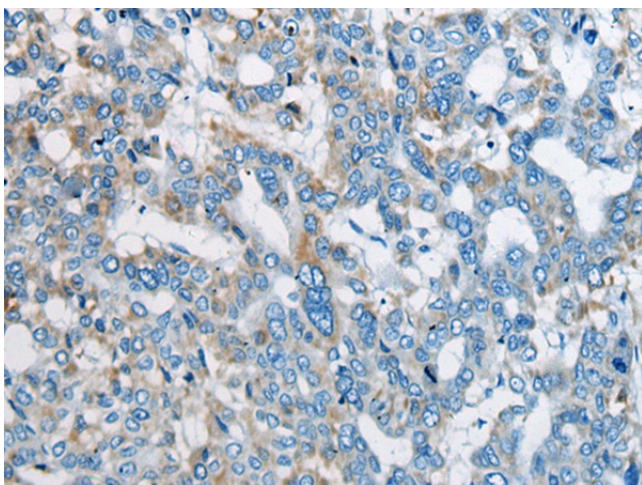
[View online »](#)

**Background:**

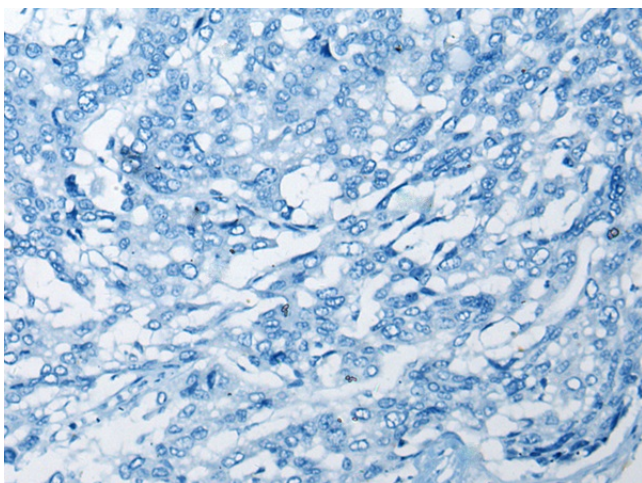
OTUD7B (OTU domain-containing protein 7B), also known as ZA20D1 or Cezanne, is an 843 amino acid protein that localizes to both the nucleus and the cytoplasm. Expressed in a variety of tissues, including liver, kidney, heart and immature B-cells, OTUD7B functions to hydrolyze branched and linear forms of polyubiquitin, specifically deubiquinating Lys-48- and Lys-63-linked polyubiquitin chains. Via its ability to deubiquitate target proteins, OTUD7B regulates the inflammatory response within the cell and may play a role in cell survival. More specifically, OTUD7B forms a negative feedback loop in pro-inflammatory signaling, thereby suppressing NF $\kappa$ B activity and helping to resolve inflammatory responses. OTUD7B contains one C-terminal A20-type zinc finger, one OTU domain and one N-terminal TRAF-binding domain through which it conveys its deubiquitinating activity.

**Synonyms:**

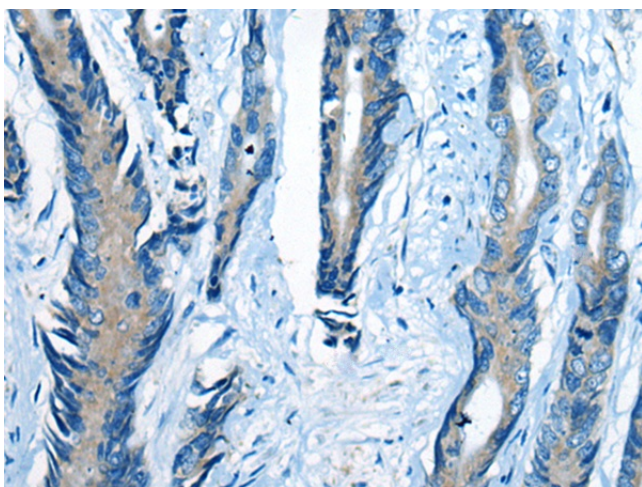
CEZANNE; ZA20D1

**Product images:**

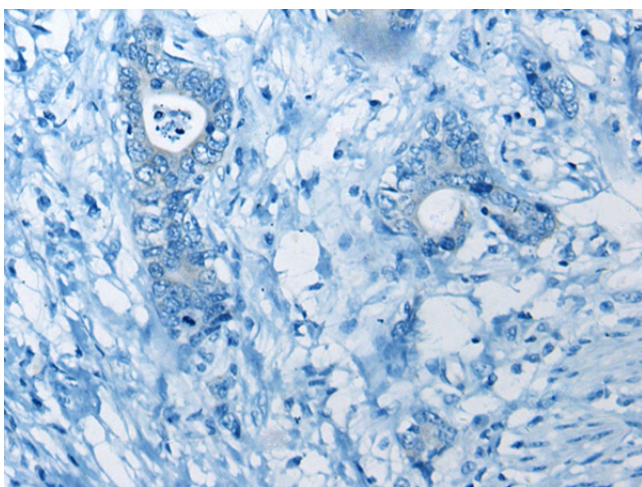
Immunohistochemistry of paraffin-embedded Human liver cancer tissue using [TA372228] (OTUD7B Antibody) at dilution 1/40 (Original magnification:  $\times 200$ )



Immunohistochemistry of paraffin-embedded Human liver cancer tissue using [TA372228] (OTUD7B Antibody) at dilution 1/40, treated with synthetic peptide. (Original magnification:  $\times 200$ )



Immunohistochemistry of paraffin-embedded Human gastric cancer tissue using [TA372228] (OTUD7B Antibody) at dilution 1/40 (Original magnification:  $\times 200$ )



Immunohistochemistry of paraffin-embedded Human gastric cancer tissue using [TA372228] (OTUD7B Antibody) at dilution 1/40, treated with synthetic peptide. (Original magnification:  $\times 200$ )