

## Product datasheet for **TA372220S**

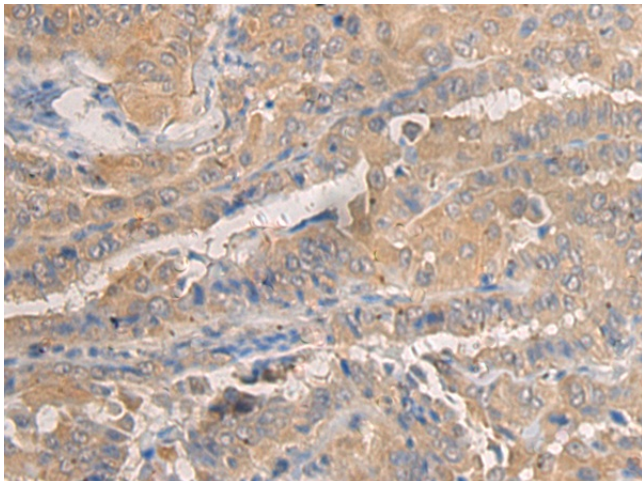
### **CENTG3 (AGAP3) Rabbit Polyclonal Antibody**

#### **Product data:**

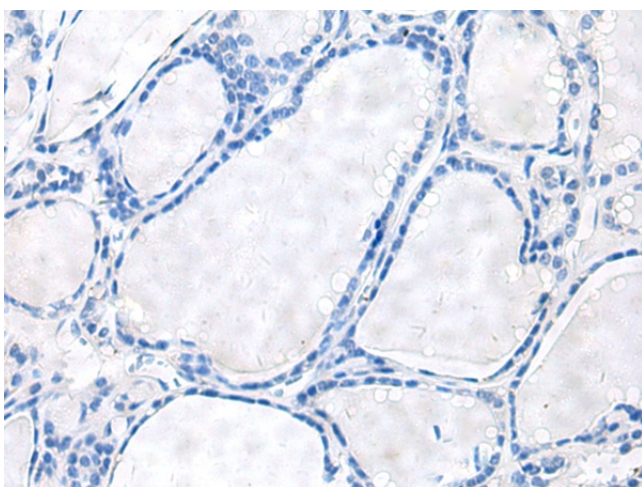
<b>Product Type:</b>	Primary Antibodies
<b>Applications:</b>	IHC
<b>Recommended Dilution:</b>	IHC: 50-100 Positive control: Human thyroid cancer Predicted cell location: Cytoplasm
<b>Reactivity:</b>	Human, Mouse
<b>Host:</b>	Rabbit
<b>Isotype:</b>	IgG
<b>Clonality:</b>	Polyclonal
<b>Immunogen:</b>	Synthetic peptide of human AGAP3
<b>Formulation:</b>	pH7.4 PBS, 0.05% NaN <sub>3</sub> , 40% Glycerol
<b>Concentration:</b>	lot specific
<b>Purification:</b>	Antigen affinity purification
<b>Conjugation:</b>	Unconjugated
<b>Storage:</b>	Store at -20°C.
<b>Stability:</b>	1 year
<b>Gene Name:</b>	ArfGAP with GTPase domain, ankyrin repeat and PH domain 3
<b>Database Link:</b>	<a href="#">Entrez Gene 116988 Human Q96P47</a>
<b>Background:</b>	This gene encodes an essential component of the N-methyl-D-aspartate (NMDA) receptor signaling complex which mediates long-term potentiation in synapses by linking activation of NMDA receptor to alpha-amino-3-hydroxy-5-methyl-4-isoxazolepropionic acid (AMPA) receptor trafficking. The encoded protein contains an N-terminal GTPase-like domain, a pleckstrin homology domain, an ArfGAP domain and several C-terminal ankyrin repeat domains.
<b>Synonyms:</b>	AGAP-3; Centaurin-gamma-3; CENTG3; CRAG; FLJ16146; FLJ34452; MRIP-1



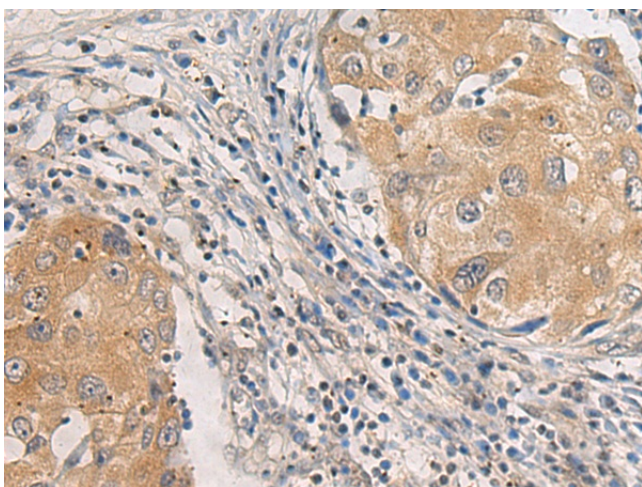
[View online »](#)

**Product images:**

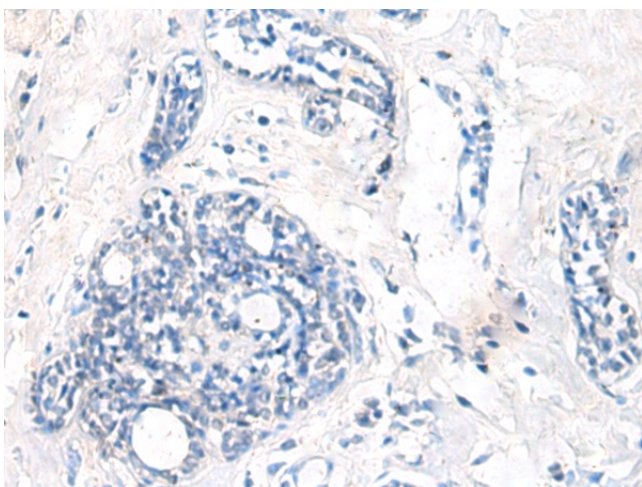
Immunohistochemistry of paraffin-embedded Human thyroid cancer tissue using [TA372220] (AGAP3 Antibody) at dilution 1/25 (Original magnification:  $\times 200$ )



Immunohistochemistry of paraffin-embedded Human thyroid cancer tissue using [TA372220] (AGAP3 Antibody) at dilution 1/25, treated with synthetic peptide. (Original magnification:  $\times 200$ )



Immunohistochemistry of paraffin-embedded Human breast cancer tissue using [TA372220] (AGAP3 Antibody) at dilution 1/25 (Original magnification: x200)



Immunohistochemistry of paraffin-embedded Human breast cancer tissue using [TA372220] (AGAP3 Antibody) at dilution 1/25, treated with synthetic peptide. (Original magnification: x200)