

## Product datasheet for **TA372219S**

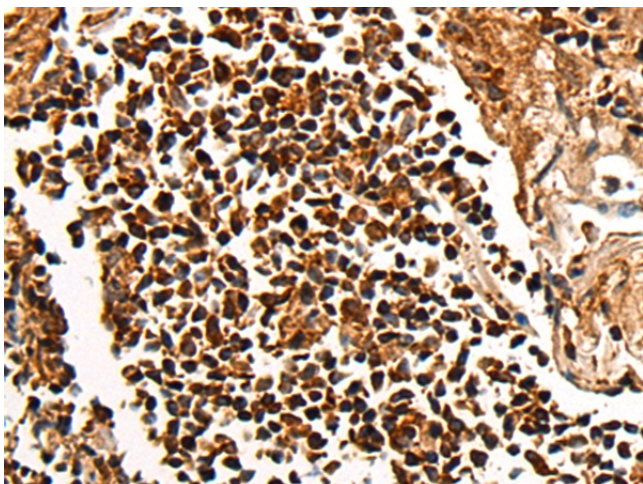
### CENPT Rabbit Polyclonal Antibody

#### Product data:

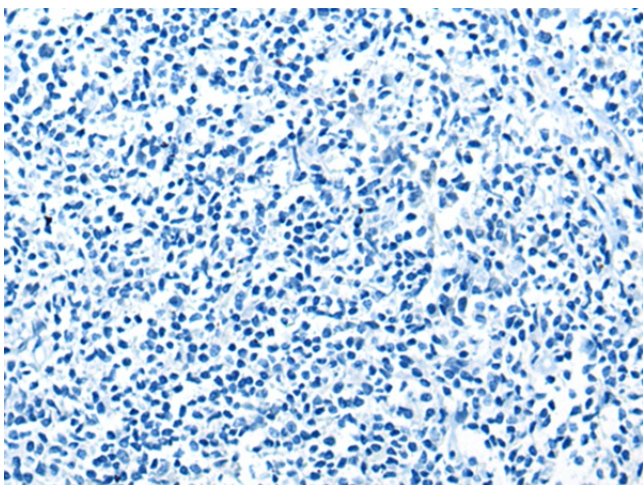
Product Type:	Primary Antibodies
Applications:	IHC
Recommended Dilution:	IHC: 25-100 Positive control: Human tonsil Predicted cell location: Nucleus
Reactivity:	Human, Mouse, Rat
Host:	Rabbit
Isotype:	IgG
Clonality:	Polyclonal
Immunogen:	Synthetic peptide of human CENPT
Formulation:	pH7.4 PBS, 0.05% NaN <sub>3</sub> , 40% Glycerol
Concentration:	lot specific
Purification:	Antigen affinity purification
Conjugation:	Unconjugated
Storage:	Store at -20°C.
Stability:	1 year
Gene Name:	centromere protein T
Database Link:	<a href="#">Entrez Gene 80152 Human Q96BT3</a>
Background:	The centromere is a specialized chromatin domain, present throughout the cell cycle, that acts as a platform on which the transient assembly of the kinetochore occurs during mitosis. All active centromeres are characterized by the presence of long arrays of nucleosomes in which CENPA (MIM 117139) replaces histone H3 (see MIM 601128). CENPT is an additional factor required for centromere assembly (Foltz et al., 2006).
Synonyms:	C16orf56; CENP-T; FLJ13111; FLJ43376; ICEN22



[View online »](#)

**Product images:**

Immunohistochemistry of paraffin-embedded Human tonsil tissue using [TA372219] (CENPT Antibody) at dilution 1/35 (Original magnification: ×200)



Immunohistochemistry of paraffin-embedded Human tonsil tissue using [TA372219] (CENPT Antibody) at dilution 1/35, treated with synthetic peptide. (Original magnification: ×200)