

Product datasheet for **TA372216S**

Cell adhesion molecule 2 (CADM2) Rabbit Polyclonal Antibody

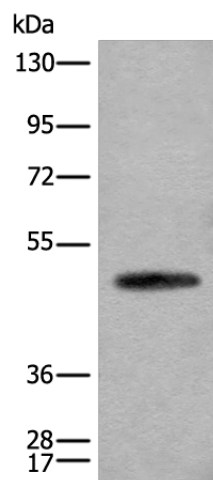
Product data:

Product Type:	Primary Antibodies
Applications:	IHC, WB
Recommended Dilution:	WB: 1000-5000 WB positive control: Human cerebella tissue lysate IHC: 30-150 Positive control: Human brain Predicted cell location: Cytoplasm and Cell membrane
Reactivity:	Human, Mouse, Rat
Host:	Rabbit
Isotype:	IgG
Clonality:	Polyclonal
Immunogen:	Synthetic peptide of human CADM2
Formulation:	pH7.4 PBS, 0.05% NaN ₃ , 40% Glycerol
Concentration:	lot specific
Purification:	Antigen affinity purification
Conjugation:	Unconjugated
Storage:	Store at -20°C.
Stability:	1 year
Predicted Protein Size:	48 kDa
Gene Name:	cell adhesion molecule 2
Database Link:	Entrez Gene 253559 Human Q8N3J6
Background:	This gene encodes a member of the synaptic cell adhesion molecule 1 (SynCAM) family which belongs to the immunoglobulin (Ig) superfamily. The encoded protein has three Ig-like domains and a cytosolic protein 4.1 binding site near the C-terminus. Proteins belonging to the protein 4.1 family crosslink spectrin and interact with other cytoskeletal proteins. Multiple transcript variants encoding different isoforms have been found for this gene.
Synonyms:	IGSF4D; MGC104534; MGC138341; MGC138343; Necl-3; NECL3; synCAM2

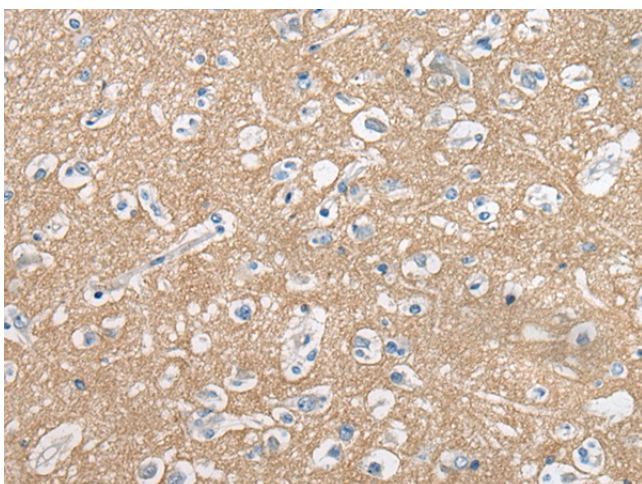


[View online »](#)

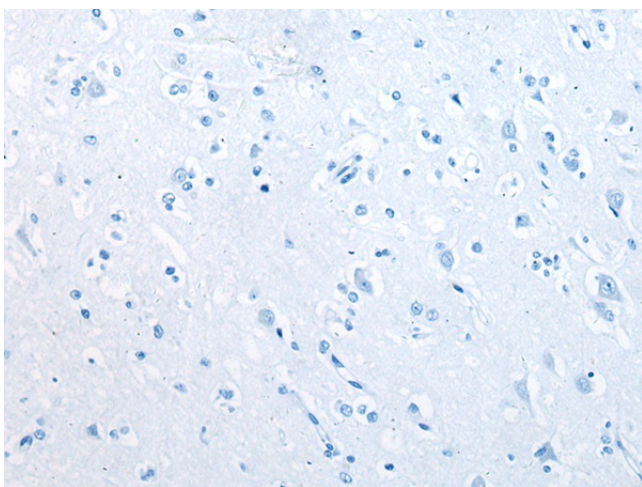
Product images:



Gel: 8%SDS-PAGE
Lysate: 20 μ g
Lane: Human cerebella tissue lysate
Primary antibody: [TA372216] (CADM2 Antibody) at dilution 1/2000
Secondary antibody: Goat anti rabbit IgG at 1/8000 dilution
Exposure time: 1 second



Immunohistochemistry of paraffin-embedded Human brain tissue using [TA372216] (CADM2 Antibody) at dilution 1/45 (Original magnification: \times 200)



Immunohistochemistry of paraffin-embedded Human brain tissue using [TA372216] (CADM2 Antibody) at dilution 1/45, treated with synthetic peptide. (Original magnification: $\times 200$)