

## Product datasheet for **TA372189S**

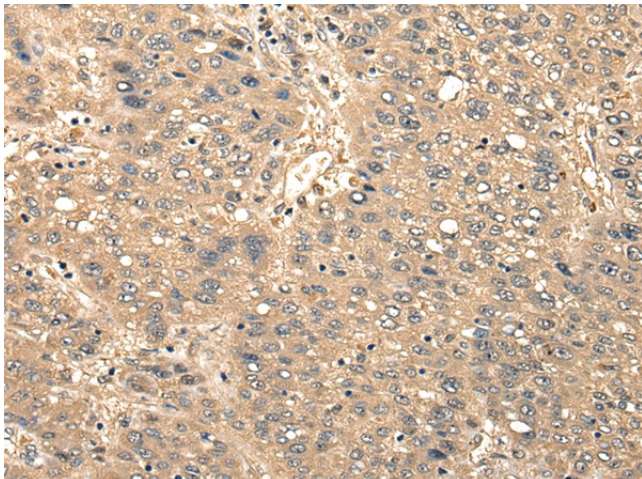
### CCNYL1 Rabbit Polyclonal Antibody

#### Product data:

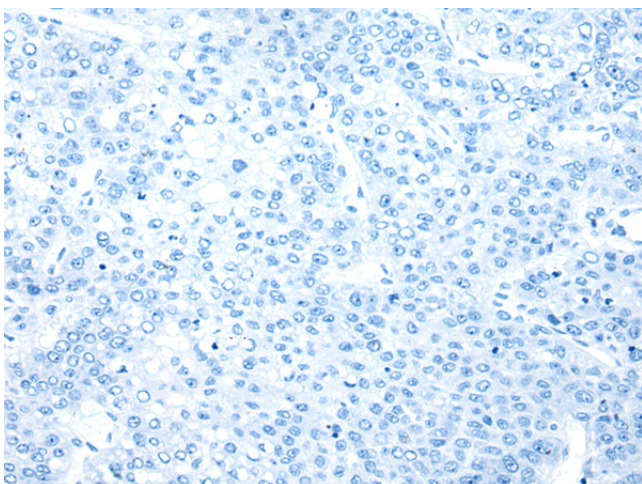
|                       |                                                                                                                                                    |
|-----------------------|----------------------------------------------------------------------------------------------------------------------------------------------------|
| Product Type:         | Primary Antibodies                                                                                                                                 |
| Applications:         | IHC                                                                                                                                                |
| Recommended Dilution: | IHC: 25-100<br>Positive control: Human liver cancer<br>Predicted cell location: Cytoplasm or Nucleus                                               |
| Reactivity:           | Human                                                                                                                                              |
| Host:                 | Rabbit                                                                                                                                             |
| Isotype:              | IgG                                                                                                                                                |
| Clonality:            | Polyclonal                                                                                                                                         |
| Immunogen:            | Synthetic peptide of human CCNYL1                                                                                                                  |
| Formulation:          | pH7.4 PBS, 0.05% NaN <sub>3</sub> , 40% Glycerol                                                                                                   |
| Concentration:        | lot specific                                                                                                                                       |
| Purification:         | Antigen affinity purification                                                                                                                      |
| Conjugation:          | Unconjugated                                                                                                                                       |
| Storage:              | Store at -20°C.                                                                                                                                    |
| Stability:            | 1 year                                                                                                                                             |
| Gene Name:            | cyclin Y like 1                                                                                                                                    |
| Database Link:        | <a href="#">Entrez Gene 151195 Human Q8N7R7</a>                                                                                                    |
| Background:           | CCNYL1 belongs to the cyclin family, Cyclin Y subfamily and contains 1 cyclin N terminal domain. The specific function of CCNYL1 is not yet known. |
| Synonyms:             | FLJ40432                                                                                                                                           |



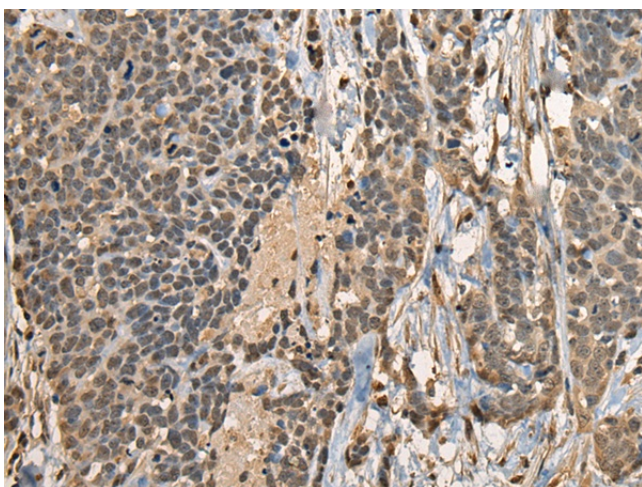
[View online »](#)

**Product images:**

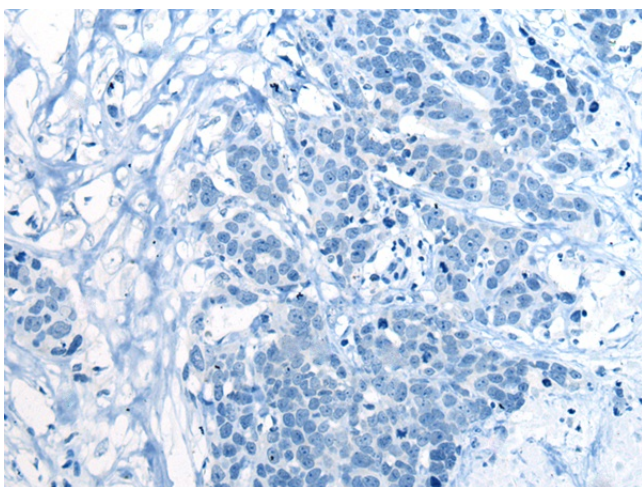
Immunohistochemistry of paraffin-embedded Human liver cancer tissue using [TA372189] (CCNYL1 Antibody) at dilution 1/25 (Original magnification: ×200)



Immunohistochemistry of paraffin-embedded Human liver cancer tissue using [TA372189] (CCNYL1 Antibody) at dilution 1/25, treated with synthetic peptide. (Original magnification: ×200)



Immunohistochemistry of paraffin-embedded Human thyroid cancer tissue using [TA372189] (CCNYL1 Antibody) at dilution 1/25 (Original magnification:  $\times 200$ )



Immunohistochemistry of paraffin-embedded Human thyroid cancer tissue using [TA372189] (CCNYL1 Antibody) at dilution 1/25, treated with synthetic peptide. (Original magnification:  $\times 200$ )