

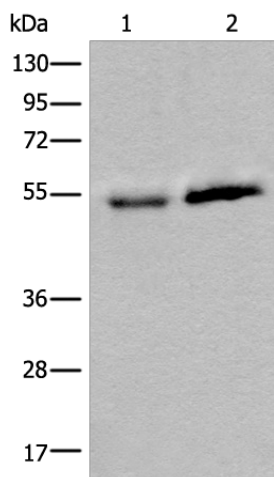
Product datasheet for **TA372185S**

CCDC85C Rabbit Polyclonal Antibody

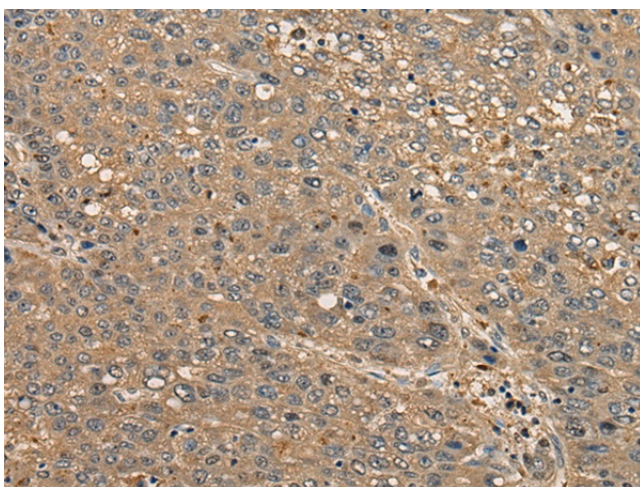
Product data:

Product Type:	Primary Antibodies
Applications:	IHC, WB
Recommended Dilution:	WB: 500-2000 WB positive control: Human fetal intestines tissue and Human breast cancer tissue lysates IHC: 30-150 Positive control: Human liver cancer Predicted cell location: Cell junction
Reactivity:	Human, Mouse
Host:	Rabbit
Isotype:	IgG
Clonality:	Polyclonal
Immunogen:	Synthetic peptide of human CCDC85C
Formulation:	pH7.4 PBS, 0.05% NaN ₃ , 40% Glycerol
Concentration:	lot specific
Purification:	Antigen affinity purification
Conjugation:	Unconjugated
Storage:	Store at -20°C.
Stability:	1 year
Predicted Protein Size:	45 kDa
Gene Name:	coiled-coil domain containing 85C
Database Link:	Entrez Gene 317762 Human A6NKD9
Background:	CCDC85C may play an important role in cortical development, especially in the maintenance of radial glia.
Synonyms:	FLJ22558; MGC117455

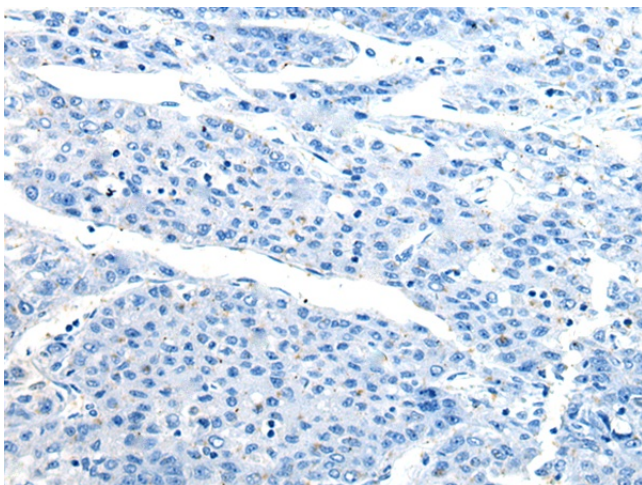
[View online »](#)

Product images:


Gel: 8%SDS-PAGE
 Lysate: 40 µg
 Lane 1-2: Human fetal intestines tissue and Human breast cancer tissue lysates
 Primary antibody: [TA372185] (CCDC85C Antibody) at dilution 1/400
 Secondary antibody: Goat anti rabbit IgG at 1/8000 dilution
 Exposure time: 5 minutes



Immunohistochemistry of paraffin-embedded Human liver cancer tissue using [TA372185] (CCDC85C Antibody) at dilution 1/30 (Original magnification: ×200)



Immunohistochemistry of paraffin-embedded Human liver cancer tissue using [TA372185] (CCDC85C Antibody) at dilution 1/30, treated with synthetic peptide. (Original magnification: $\times 200$)