

Product datasheet for **TA372179S**

CBF (CEBPZ) Rabbit Polyclonal Antibody

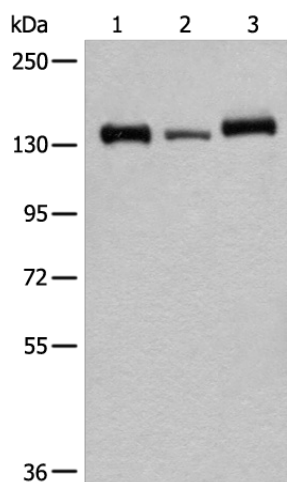
Product data:

Product Type:	Primary Antibodies
Applications:	IHC, WB
Recommended Dilution:	WB: 200-1000 WB positive control: Hela,293T and K562 cell lysates IHC: 25-100 Positive control: Human thyroid cancer Predicted cell location: Nucleus or Cytoplasm
Reactivity:	Human
Host:	Rabbit
Isotype:	IgG
Clonality:	Polyclonal
Immunogen:	Synthetic peptide of human CEBPZ
Formulation:	pH7.4 PBS, 0.05% NaN ₃ , 40% Glycerol
Concentration:	lot specific
Purification:	Antigen affinity purification
Conjugation:	Unconjugated
Storage:	Store at -20°C.
Stability:	1 year
Predicted Protein Size:	121 kDa
Gene Name:	CCAAT/enhancer binding protein zeta
Database Link:	Entrez Gene 10153 Human Q03701
Background:	Stimulates transcription from the HSP70 promoter.
Synonyms:	CBF; CBF2; CTF2; HSP-CBF; NOC1

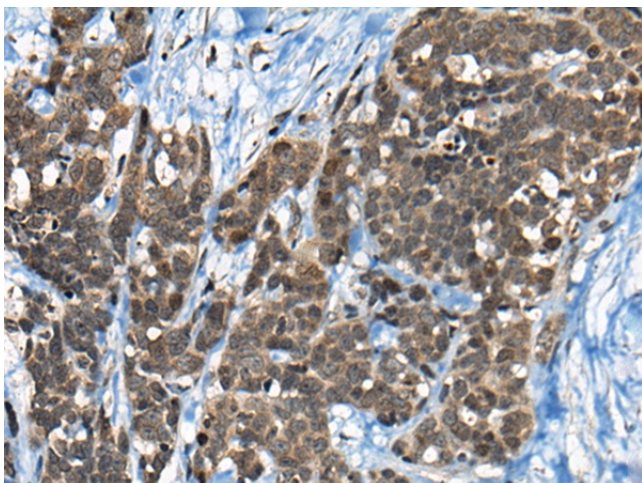


[View online »](#)

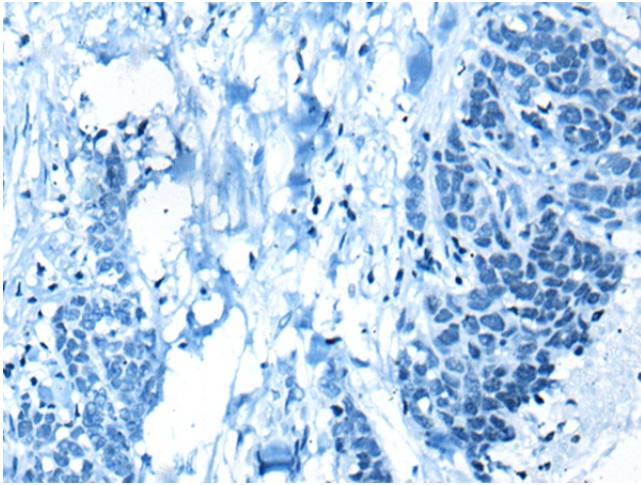
Product images:



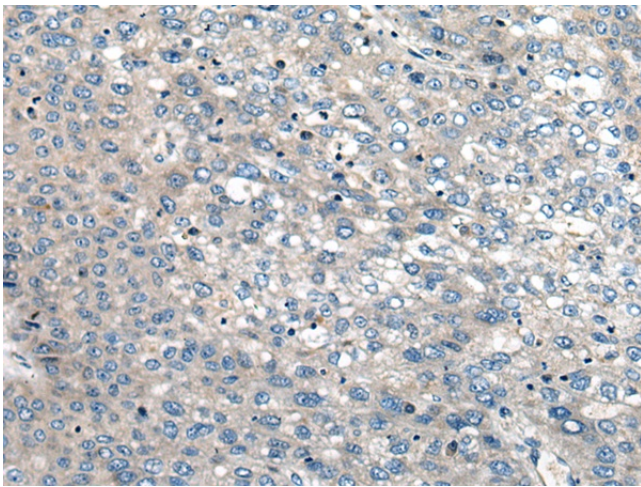
Gel: 6%SDS-PAGE
Lysate: 40 μ g
Lane 1-3: HeLa
293T and K562 cell lysates
Primary antibody: [TA372179] (CEBPZ Antibody)
at dilution 1/200
Secondary antibody: Goat anti rabbit IgG at
1/8000 dilution
Exposure time: 5 seconds



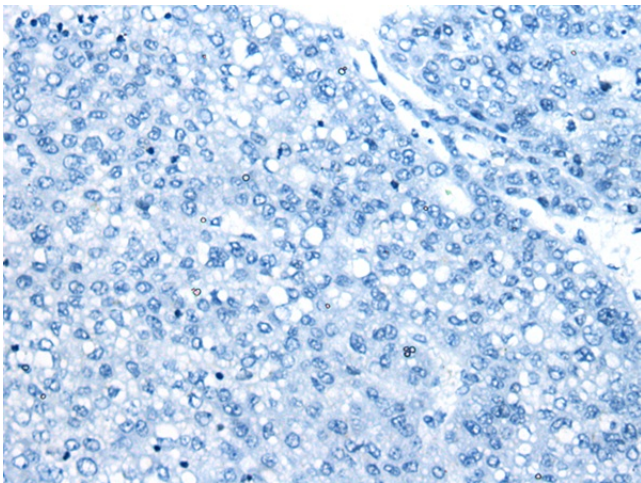
Immunohistochemistry of paraffin-embedded
Human thyroid cancer tissue using [TA372179]
(CEBPZ Antibody) at dilution 1/20 (Original
magnification: \times 200)



Immunohistochemistry of paraffin-embedded Human thyroid cancer tissue using [TA372179] (CEBPZ Antibody) at dilution 1/20, treated with synthetic peptide. (Original magnification: x200)



Immunohistochemistry of paraffin-embedded Human liver cancer tissue using [TA372179] (CEBPZ Antibody) at dilution 1/20 (Original magnification: x200)



Immunohistochemistry of paraffin-embedded Human liver cancer tissue using [TA372179] (CEBPZ Antibody) at dilution 1/20, treated with synthetic peptide. (Original magnification: x200)