

Product datasheet for **TA372172S**

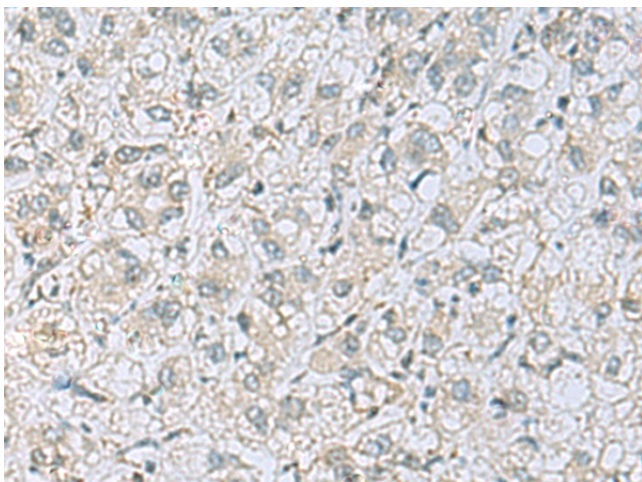
CAMK2G Rabbit Polyclonal Antibody

Product data:

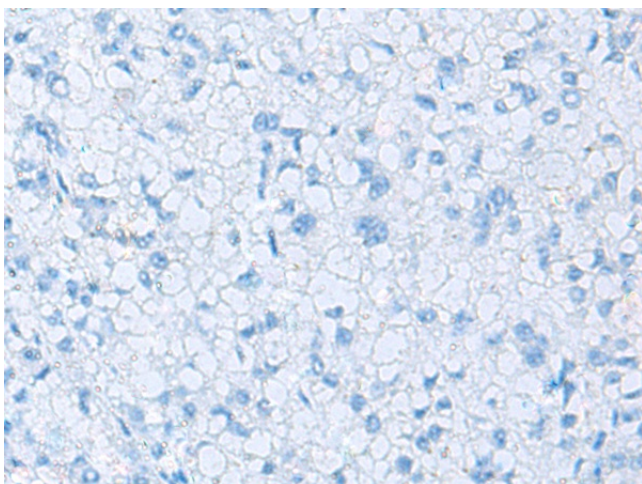
Product Type:	Primary Antibodies
Applications:	IHC
Recommended Dilution:	IHC: 25-50 Positive control: Human liver cancer Predicted cell location: Cytoplasm
Reactivity:	Human, Mouse, Rat
Host:	Rabbit
Isotype:	IgG
Clonality:	Polyclonal
Immunogen:	Synthetic peptide of human CAMK2G
Formulation:	pH7.4 PBS, 0.05% NaN ₃ , 40% Glycerol
Concentration:	lot specific
Purification:	Antigen affinity purification
Conjugation:	Unconjugated
Storage:	Store at -20°C.
Stability:	1 year
Gene Name:	calcium/calmodulin dependent protein kinase II gamma
Database Link:	Entrez Gene 818 Human Q13555
Background:	The product of this gene is one of the four subunits of an enzyme which belongs to the serine/threonine protein kinase family, and to the Ca(2+)/calmodulin-dependent protein kinase subfamily. Calcium signaling is crucial for several aspects of plasticity at glutamatergic synapses. In mammalian cells the enzyme is composed of four different chains: alpha, beta, gamma, and delta. The product of this gene is a gamma chain. Many alternatively spliced transcripts encoding different isoforms have been described but the full-length nature of all the variants has not been determined.
Synonyms:	CAMK; CAMK-II; CAMKG; FLJ16043; MGC26678



[View online »](#)

Product images:

Immunohistochemistry of paraffin-embedded Human liver cancer tissue using [TA372172] (CAMK2G Antibody) at dilution 1/30 (Original magnification: x200)



Immunohistochemistry of paraffin-embedded Human liver cancer tissue using [TA372172] (CAMK2G Antibody) at dilution 1/30, treated with synthetic peptide. (Original magnification: x200)