

Product datasheet for **TA372168S**

Calpain 14 (CAPN14) Rabbit Polyclonal Antibody

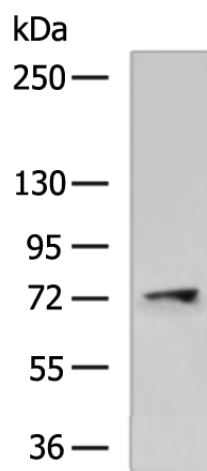
Product data:

Product Type:	Primary Antibodies
Applications:	IHC, WB
Recommended Dilution:	WB: 500-2000 WB positive control: Human cerebrum tissue lysate IHC: 50-100 Positive control: Human tonsil Predicted cell location: Cytoplasm
Reactivity:	Human
Host:	Rabbit
Isotype:	IgG
Clonality:	Polyclonal
Immunogen:	Synthetic peptide of human CAPN14
Formulation:	pH7.4 PBS, 0.05% NaN ₃ , 40% Glycerol
Concentration:	lot specific
Purification:	Antigen affinity purification
Conjugation:	Unconjugated
Storage:	Store at -20°C.
Stability:	1 year
Predicted Protein Size:	79 kDa
Gene Name:	calpain 14
Database Link:	Entrez Gene 440854 Human A8MX76
Background:	Calpains are a family of cytosolic calcium-activated cysteine proteases involved in a variety of cellular processes including apoptosis, cell division, modulation of integrin-cytoskeletal interactions, and synaptic plasticity (Dear et al., 2000 [PubMed 10964513]). CAPN14 belongs to the calpain large subunit family.
Synonyms:	FLJ54788

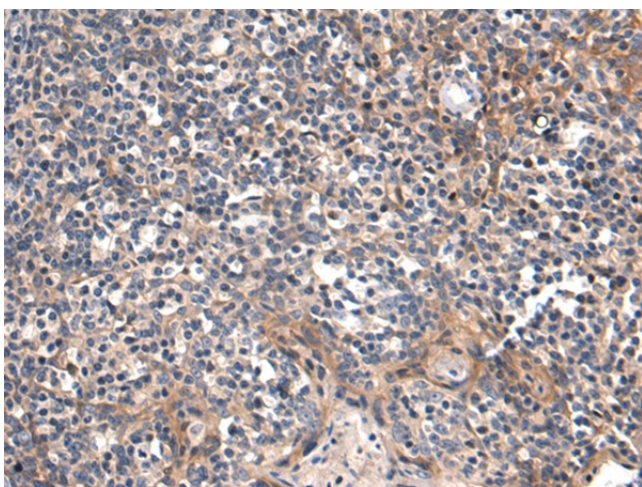


[View online »](#)

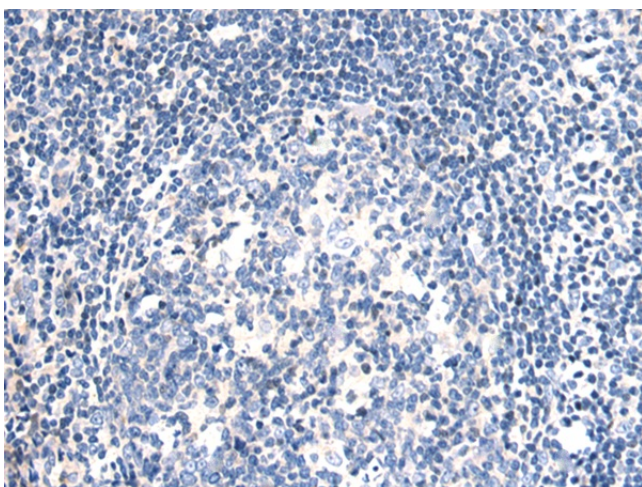
Product images:



Gel: 6%SDS-PAGE
 Lysate: 40 µg
 Lane: Human cerebrum tissue lysate
 Primary antibody: [TA372168] (CAPN14 Antibody)
 at dilution 1/600
 Secondary antibody: Goat anti rabbit IgG at
 1/5000 dilution
 Exposure time: 15 seconds



Immunohistochemistry of paraffin-embedded
 Human tonsil tissue using [TA372168] (CAPN14
 Antibody) at dilution 1/60 (Original magnification:
 ×200)



Immunohistochemistry of paraffin-embedded Human tonsil tissue using [TA372168] (CAPN14 Antibody) at dilution 1/60, treated with synthetic peptide. (Original magnification: ×200)