

## Product datasheet for **TA372168**

### Calpain 14 (CAPN14) Rabbit Polyclonal Antibody

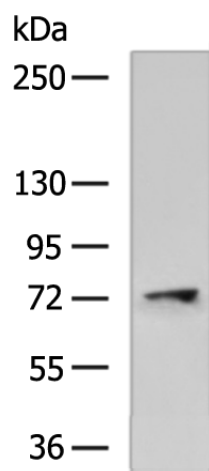
#### Product data:

Product Type:	Primary Antibodies
Applications:	IHC, WB
Recommended Dilution:	WB: 500-2000 WB positive control: Human cerebrum tissue lysate IHC: 50-100 Positive control: Human tonsil Predicted cell location: Cytoplasm
Reactivity:	Human
Host:	Rabbit
Isotype:	IgG
Clonality:	Polyclonal
Immunogen:	Synthetic peptide of human CAPN14
Formulation:	pH7.4 PBS, 0.05% NaN <sub>3</sub> , 40% Glycerol
Concentration:	lot specific
Purification:	Antigen affinity purification
Conjugation:	Unconjugated
Storage:	Store at -20°C.
Stability:	1 year
Predicted Protein Size:	79 kDa
Gene Name:	calpain 14
Database Link:	<a href="#">Entrez Gene 440854 Human A8MX76</a>
Background:	Calpains are a family of cytosolic calcium-activated cysteine proteases involved in a variety of cellular processes including apoptosis, cell division, modulation of integrin-cytoskeletal interactions, and synaptic plasticity (Dear et al., 2000 [PubMed 10964513]). CAPN14 belongs to the calpain large subunit family.
Synonyms:	FLJ54788

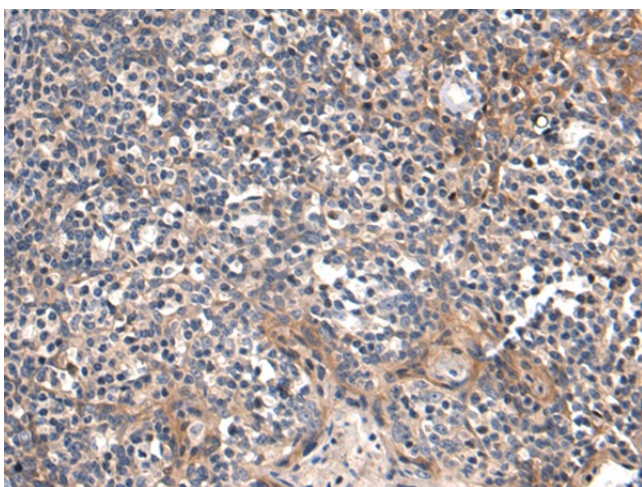


[View online »](#)

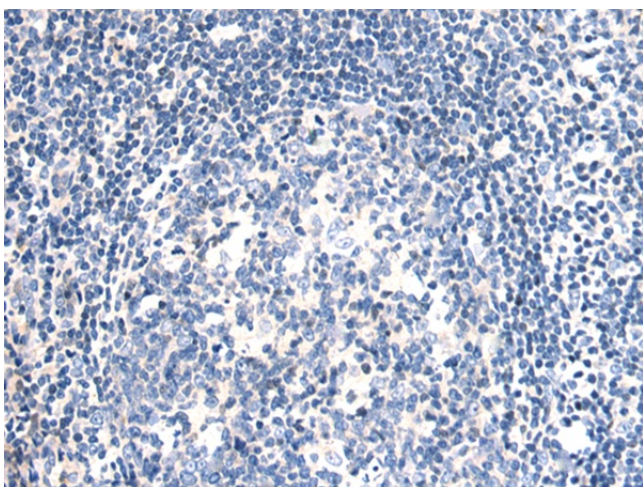
## Product images:



Gel: 6%SDS-PAGE  
Lysate: 40 µg  
Lane: Human cerebrum tissue lysate  
Primary antibody: TA372168 (CAPN14 Antibody)  
at dilution 1/600  
Secondary antibody: Goat anti rabbit IgG at  
1/5000 dilution  
Exposure time: 15 seconds



Immunohistochemistry of paraffin-embedded  
Human tonsil tissue using TA372168 (CAPN14  
Antibody) at dilution 1/60 (Original magnification:  
×200)



Immunohistochemistry of paraffin-embedded Human tonsil tissue using TA372168 (CAPN14 Antibody) at dilution 1/60, treated with synthetic peptide. (Original magnification:  $\times 200$ )