

## Product datasheet for **TA372164**

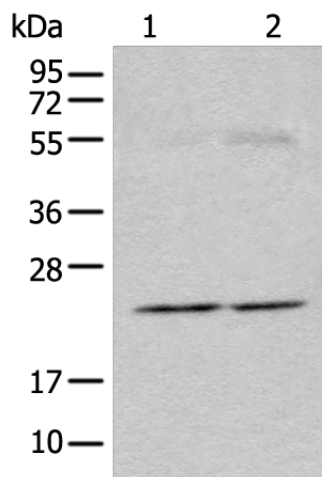
### CAPS Rabbit Polyclonal Antibody

#### Product data:

Product Type:	Primary Antibodies
Applications:	IHC, WB
Recommended Dilution:	WB: 200-1000 WB positive control: Human pancreas tissue and Human kidney tissue lysates IHC: 20-100 Positive control: Human tonsil Predicted cell location: Cytoplasm
Reactivity:	Human
Host:	Rabbit
Isotype:	IgG
Clonality:	Polyclonal
Immunogen:	Synthetic peptide of human CAPS
Formulation:	pH7.4 PBS, 0.05% NaN <sub>3</sub> , 40% Glycerol
Concentration:	lot specific
Purification:	Antigen affinity purification
Conjugation:	Unconjugated
Storage:	Store at -20°C.
Stability:	1 year
Predicted Protein Size:	21 kDa
Gene Name:	calcyphosine
Database Link:	<a href="#">Entrez Gene 828 Human Q13938</a>
Background:	This gene encodes a calcium-binding protein, which may play a role in the regulation of ion transport. A similar protein was first described as a potentially important regulatory protein in the dog thyroid and was termed as R2D5 antigen in rabbit. Alternative splicing of this gene generates two transcript variants.
Synonyms:	Calcyphosine; CAPS1; MGC126562



[View online »](#)

**Product images:**

Gel: 12%SDS-PAGE

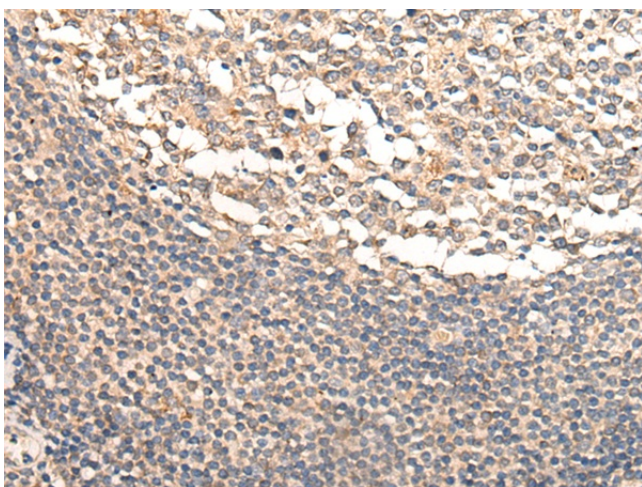
Lysate: 40  $\mu$ g

Lane 1-2: Human pancreas tissue and Human kidney tissue lysates

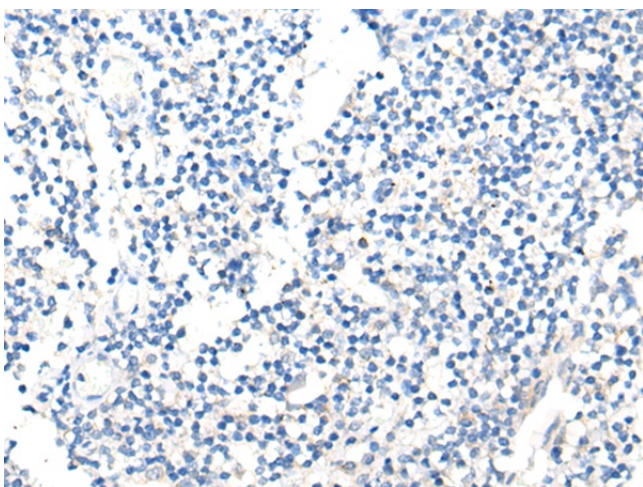
Primary antibody: TA372164 (CAPS Antibody) at dilution 1/200

Secondary antibody: Goat anti rabbit IgG at 1/8000 dilution

Exposure time: 90 seconds



Immunohistochemistry of paraffin-embedded Human tonsil tissue using TA372164 (CAPS Antibody) at dilution 1/25 (Original magnification:  $\times$ 200)



Immunohistochemistry of paraffin-embedded Human tonsil tissue using TA372164 (CAPS Antibody) at dilution 1/25, treated with synthetic peptide. (Original magnification:  $\times 200$ )