

Product datasheet for **TA372150S**

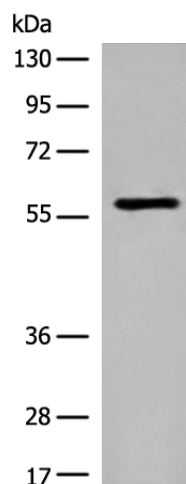
C2orf65 (M1AP) Rabbit Polyclonal Antibody

Product data:

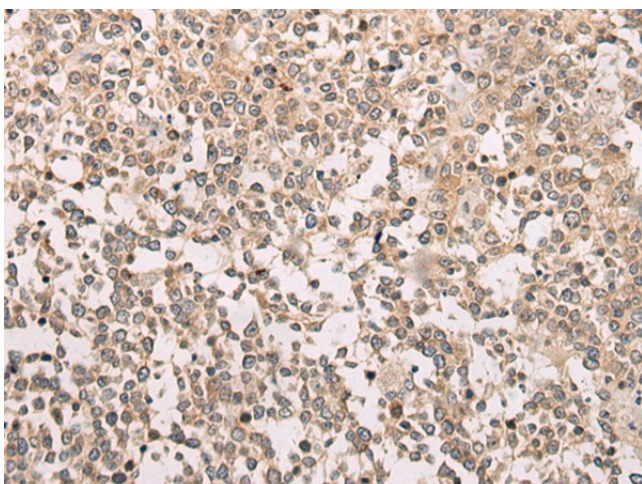
Product Type:	Primary Antibodies
Applications:	IHC, WB
Recommended Dilution:	WB: 500-2000 WB positive control: Jurkat cell lysate IHC: 50-300 Positive control: Human tonsil Predicted cell location: Cytoplasm
Reactivity:	Human
Host:	Rabbit
Isotype:	IgG
Clonality:	Polyclonal
Immunogen:	Synthetic peptide of human M1AP
Formulation:	pH7.4 PBS, 0.05% NaN ₃ , 40% Glycerol
Concentration:	lot specific
Purification:	Antigen affinity purification
Conjugation:	Unconjugated
Storage:	Store at -20°C.
Stability:	1 year
Predicted Protein Size:	59 kDa
Gene Name:	meiosis 1 associated protein
Database Link:	Entrez Gene 130951 Human Q8TC57
Background:	This gene encodes a protein that is likely to function in progression of meiosis. A similar protein in mouse plays a role in gametogenesis in both sexes. Alternate splicing results in multiple transcript variants encoding different isoforms.
Synonyms:	C2orf65; D6Mm5e; SPATA37



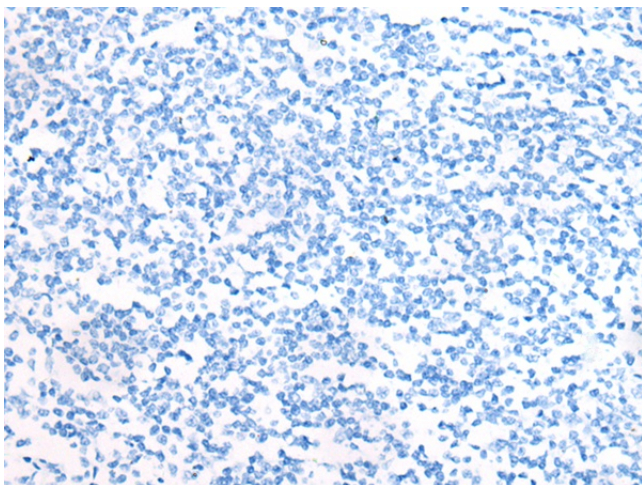
[View online »](#)

Product images:

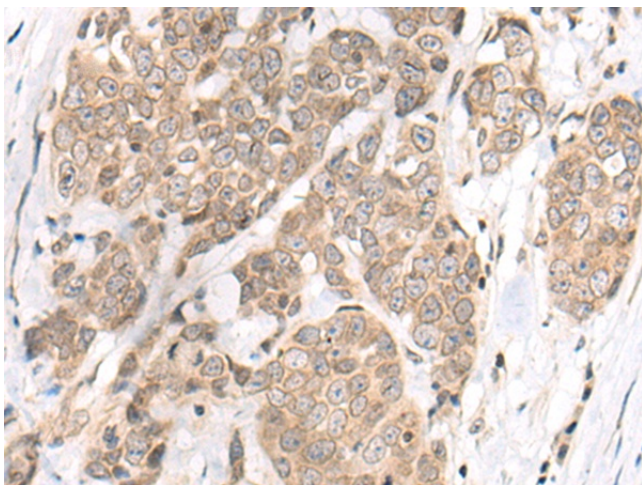
Gel: 8%SDS-PAGE
Lysate: 40 μ g
Lane: Jurkat cell lysate
Primary antibody: [TA372150] (M1AP Antibody) at dilution 1/600
Secondary antibody: Goat anti rabbit IgG at 1/8000 dilution
Exposure time: 30 seconds



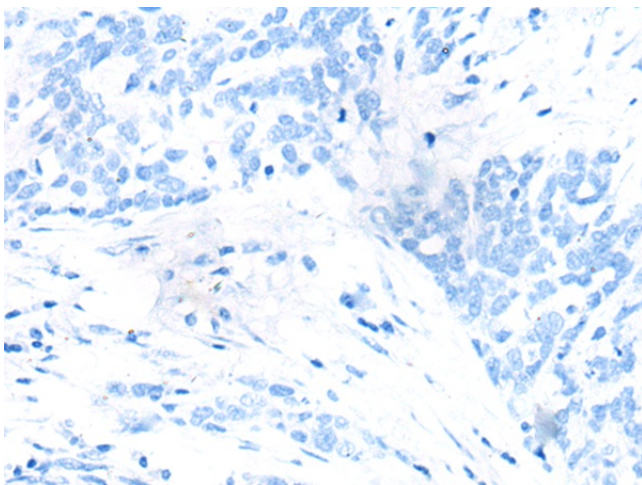
Immunohistochemistry of paraffin-embedded Human tonsil tissue using [TA372150] (M1AP Antibody) at dilution 1/80 (Original magnification: \times 200)



Immunohistochemistry of paraffin-embedded Human tonsil tissue using [TA372150] (M1AP Antibody) at dilution 1/80, treated with synthetic peptide. (Original magnification: $\times 200$)



Immunohistochemistry of paraffin-embedded Human thyroid cancer tissue using [TA372150] (M1AP Antibody) at dilution 1/80 (Original magnification: $\times 200$)



Immunohistochemistry of paraffin-embedded Human thyroid cancer tissue using [TA372150] (M1AP Antibody) at dilution 1/80, treated with synthetic peptide. (Original magnification: $\times 200$)