

Product datasheet for **TA372148S**

C20orf117 (SOGA1) Rabbit Polyclonal Antibody

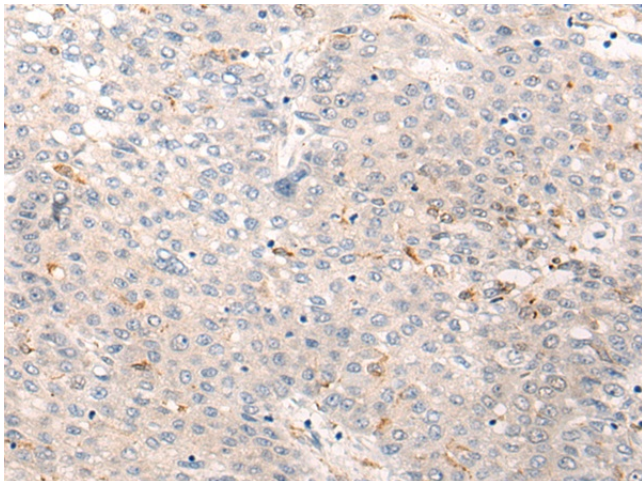
Product data:

| | |
|-----------------------|---|
| Product Type: | Primary Antibodies |
| Applications: | IHC |
| Recommended Dilution: | IHC: 20-100 Positive control: Human liver cancer Predicted cell location: Cytoplasm |
| Reactivity: | Human |
| Host: | Rabbit |
| Isotype: | IgG |
| Clonality: | Polyclonal |
| Immunogen: | Synthetic peptide of human SOGA1 |
| Formulation: | pH7.4 PBS, 0.05% NaN ₃ , 40% Glycerol |
| Concentration: | lot specific |
| Purification: | Antigen affinity purification |
| Conjugation: | Unconjugated |
| Storage: | Store at -20°C. |
| Stability: | 1 year |
| Gene Name: | suppressor of glucose, autophagy associated 1 |
| Database Link: | Entrez Gene 140710 Human O94964 |
| Background: | Regulates autophagy by playing a role in the reduction of glucose production in an adiponectin- and insulin-dependent manner. |
| Synonyms: | C20orf117; KIAA0889; SOGA |

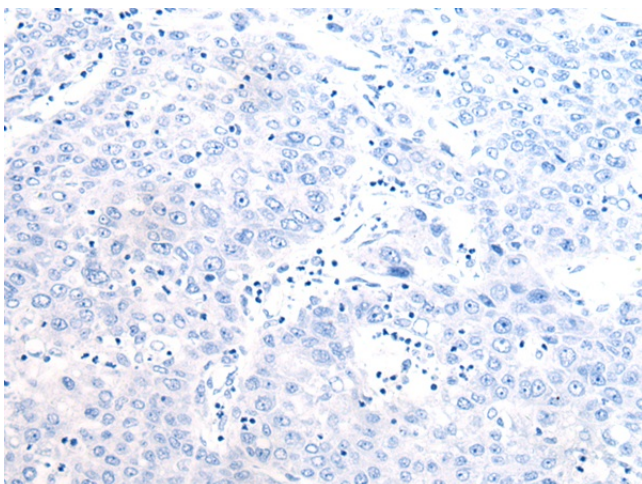


[View online »](#)

Product images:



Immunohistochemistry of paraffin-embedded Human liver cancer tissue using [TA372148] (SOGA1 Antibody) at dilution 1/30 (Original magnification: $\times 200$)



Immunohistochemistry of paraffin-embedded Human liver cancer tissue using [TA372148] (SOGA1 Antibody) at dilution 1/30, treated with synthetic peptide. (Original magnification: $\times 200$)