

Product datasheet for **TA372146**

C1orf69 (IBA57) Rabbit Polyclonal Antibody

Product data:

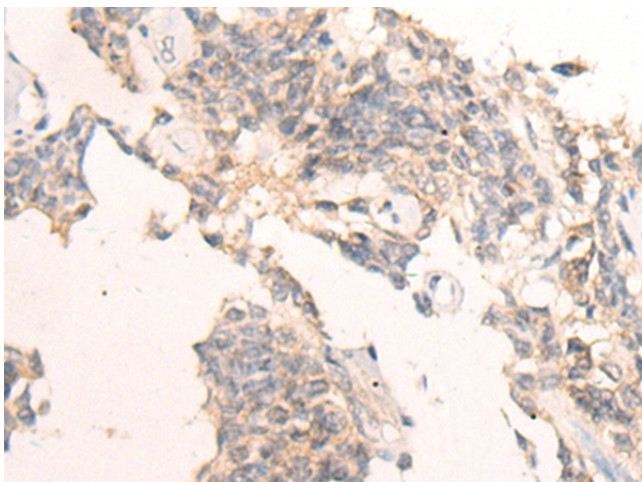
| | |
|-----------------------|---|
| Product Type: | Primary Antibodies |
| Applications: | IHC |
| Recommended Dilution: | IHC: 30-150 Positive control: Human ovarian cancer Predicted cell location: Cytoplasm |
| Reactivity: | Human |
| Host: | Rabbit |
| Isotype: | IgG |
| Clonality: | Polyclonal |
| Immunogen: | Synthetic peptide of human IBA57 |
| Formulation: | pH7.4 PBS, 0.05% NaN ₃ , 40% Glycerol |
| Concentration: | lot specific |
| Purification: | Antigen affinity purification |
| Conjugation: | Unconjugated |
| Storage: | Store at -20°C. |
| Stability: | 1 year |
| Gene Name: | IBA57 homolog, iron-sulfur cluster assembly |
| Database Link: | Entrez Gene 200205 Human Q5T440 |

Background: The protein encoded by this gene localizes to the mitochondrion and is part of the iron-sulfur cluster assembly pathway. The encoded protein functions late in the biosynthesis of mitochondrial 4Fe-4S proteins. Defects in this gene have been associated with autosomal recessive spastic paraplegia-74 and with multiple mitochondrial dysfunctions syndrome-3. Two transcript variants encoding different isoforms have been found for this gene. The smaller isoform is not likely to be localized to the mitochondrion since it lacks the amino-terminal transit peptide.

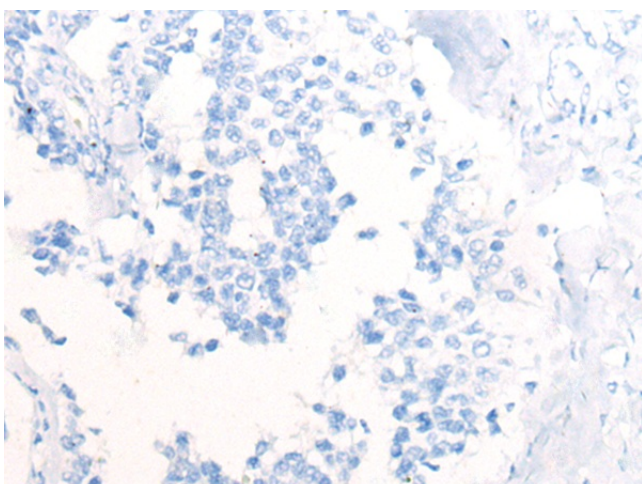
Synonyms: 4930543L23Rik; A230051G13Rik; C1orf69; RGD1306000; RP23-192P17.8



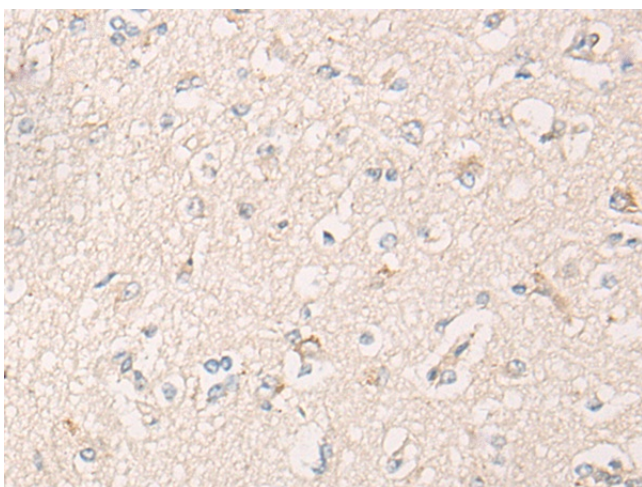
[View online »](#)

Product images:

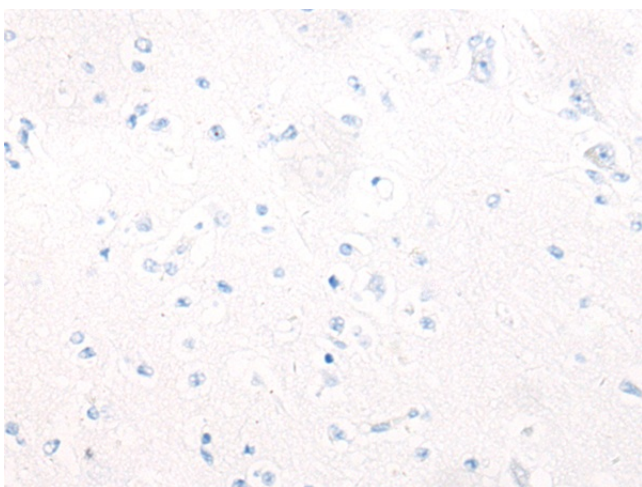
Immunohistochemistry of paraffin-embedded Human ovarian cancer tissue using TA372146 (IBA57 Antibody) at dilution 1/65 (Original magnification: $\times 200$)



Immunohistochemistry of paraffin-embedded Human ovarian cancer tissue using TA372146 (IBA57 Antibody) at dilution 1/65, treated with synthetic peptide. (Original magnification: $\times 200$)



Immunohistochemistry of paraffin-embedded Human brain tissue using TA372146 (IBA57 Antibody) at dilution 1/65 (Original magnification: x200)



Immunohistochemistry of paraffin-embedded Human brain tissue using TA372146 (IBA57 Antibody) at dilution 1/65, treated with synthetic peptide. (Original magnification: x200)