

Product datasheet for **TA372143S**

C19orf2 (URI1) Rabbit Polyclonal Antibody

Product data:

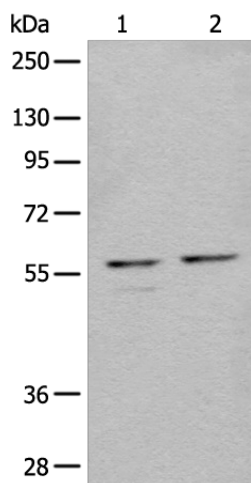
| | |
|-------------------------|---|
| Product Type: | Primary Antibodies |
| Applications: | IHC, WB |
| Recommended Dilution: | WB: 500-2000 WB positive control: K562 and 293T cell lysates IHC: 30-150 Positive control: Human lung cancer Predicted cell location: Cytoplasm and Nucleus |
| Reactivity: | Human, Mouse |
| Host: | Rabbit |
| Isotype: | IgG |
| Clonality: | Polyclonal |
| Immunogen: | Synthetic peptide of human URI1 |
| Formulation: | pH7.4 PBS, 0.05% NaN ₃ , 40% Glycerol |
| Concentration: | lot specific |
| Purification: | Antigen affinity purification |
| Conjugation: | Unconjugated |
| Storage: | Store at -20°C. |
| Stability: | 1 year |
| Predicted Protein Size: | 60 kDa |
| Gene Name: | URI1 prefoldin-like chaperone |
| Database Link: | Entrez Gene 8725 Human O94763 |
| Background: | This gene encodes member of the prefoldin family of molecular chaperones. The encoded protein functions as a scaffolding protein and plays roles in ubiquitination and transcription, in part through interactions with the RNA polymerase II subunit RPB5. This gene may play a role in multiple malignancies including ovarian cancer and hepatocellular carcinoma. Alternatively spliced transcript variants encoding multiple isoforms have been observed for this gene, and a pseudogene of this gene is located on the long arm of chromosome 22. |



[View online »](#)

Synonyms: C19orf2; NNX3; PPP1R19; RMP; URI

Product images:



Gel: 8%SDS-PAGE

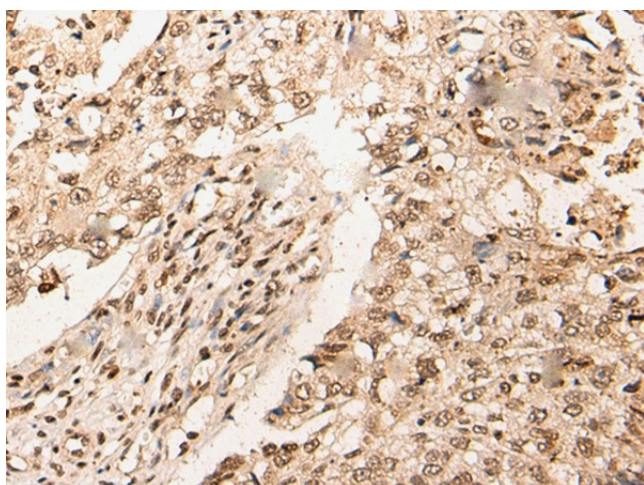
Lysate: 40 μ g

Lane 1-2: K562 and 293T cell lysates

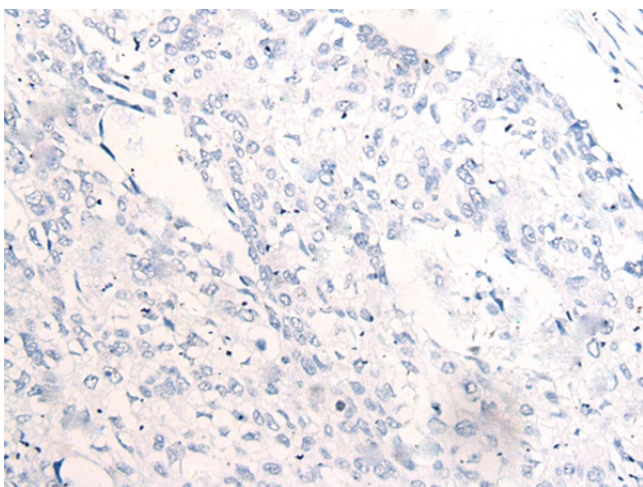
Primary antibody: [TA372143] (URI1 Antibody) at dilution 1/450

Secondary antibody: Goat anti rabbit IgG at 1/8000 dilution

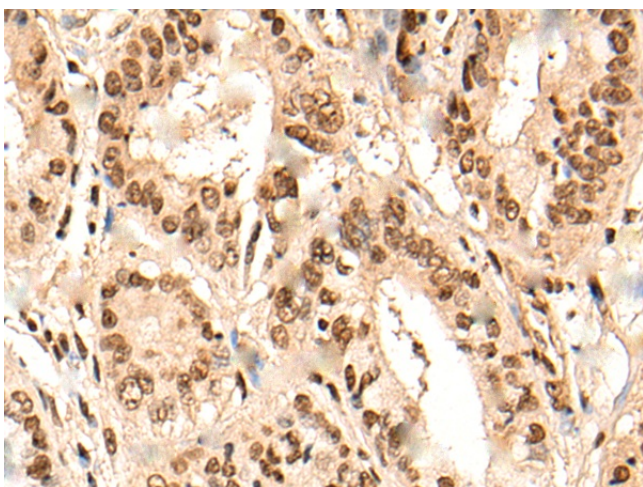
Exposure time: 50 seconds



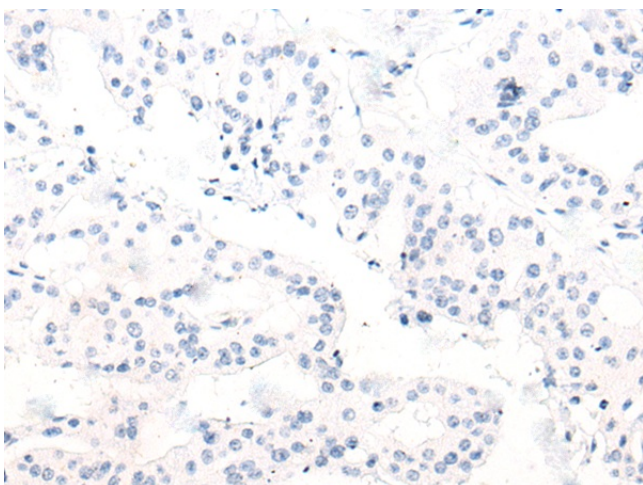
Immunohistochemistry of paraffin-embedded Human lung cancer tissue using [TA372143] (URI1 Antibody) at dilution 1/45 (Original magnification: \times 200)



Immunohistochemistry of paraffin-embedded Human lung cancer tissue using [TA372143] (URI1 Antibody) at dilution 1/45, treated with synthetic peptide. (Original magnification: $\times 200$)



Immunohistochemistry of paraffin-embedded Human liver cancer tissue using [TA372143] (URI1 Antibody) at dilution 1/45 (Original magnification: $\times 200$)



Immunohistochemistry of paraffin-embedded Human liver cancer tissue using [TA372143] (URI1 Antibody) at dilution 1/45, treated with synthetic peptide. (Original magnification: $\times 200$)