

Product datasheet for **TA372140S**

C16orf88 (KNOP1) Rabbit Polyclonal Antibody

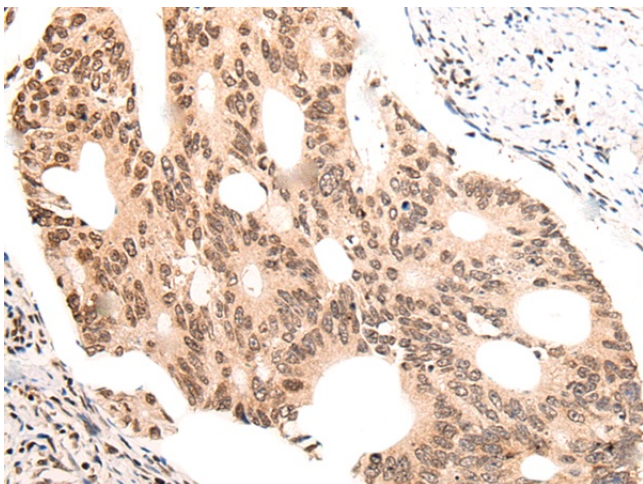
Product data:

Product Type:	Primary Antibodies
Applications:	IHC
Recommended Dilution:	IHC: 40-200 Positive control: Human colorectal cancer Predicted cell location: Nucleus
Reactivity:	Human, Mouse
Host:	Rabbit
Isotype:	IgG
Clonality:	Polyclonal
Immunogen:	Synthetic peptide of human KNOP1
Formulation:	pH7.4 PBS, 0.05% NaN ₃ , 40% Glycerol
Concentration:	lot specific
Purification:	Antigen affinity purification
Conjugation:	Unconjugated
Storage:	Store at -20°C.
Stability:	1 year
Gene Name:	lysine-rich nucleolar protein 1
Database Link:	Entrez Gene 400506 Human Q1ED39
Background:	poly(A) RNA binding
Synonyms:	101F10.1; C16orf88; FAM191A; TSG118

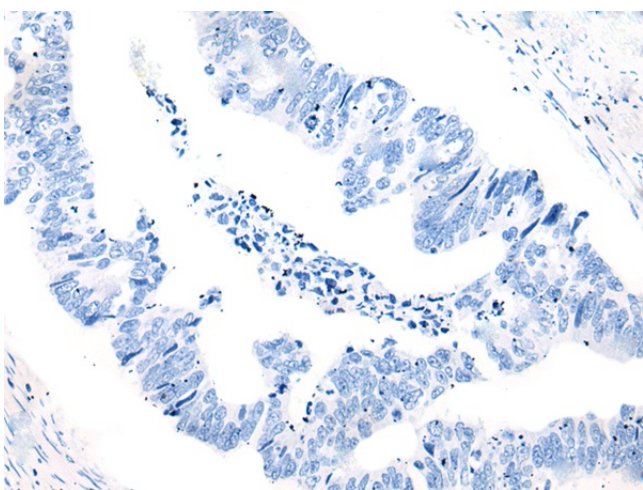


[View online »](#)

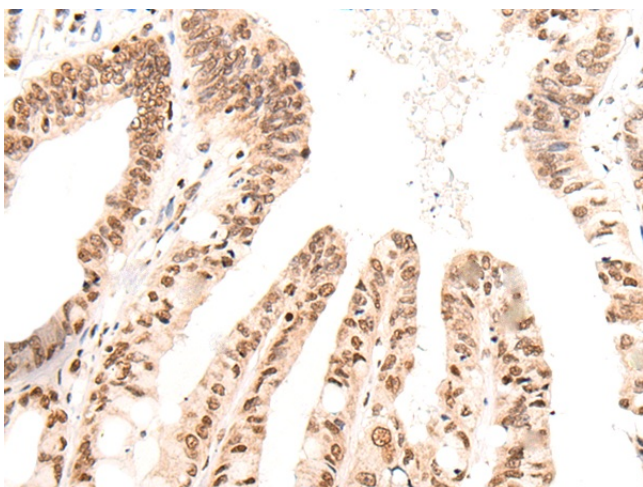
Product images:



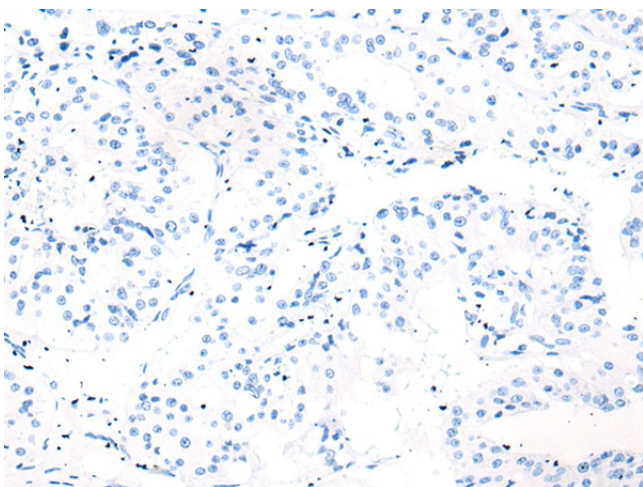
Immunohistochemistry of paraffin-embedded Human colorectal cancer tissue using [TA372140] (KNOP1 Antibody) at dilution 1/55 (Original magnification: $\times 200$)



Immunohistochemistry of paraffin-embedded Human colorectal cancer tissue using [TA372140] (KNOP1 Antibody) at dilution 1/55, treated with synthetic peptide. (Original magnification: $\times 200$)



Immunohistochemistry of paraffin-embedded Human liver cancer tissue using [TA372140] (KNOP1 Antibody) at dilution 1/55 (Original magnification: $\times 200$)



Immunohistochemistry of paraffin-embedded Human liver cancer tissue using [TA372140] (KNOP1 Antibody) at dilution 1/55, treated with synthetic peptide. (Original magnification: $\times 200$)