

Product datasheet for **TA372140**

C16orf88 (KNOP1) Rabbit Polyclonal Antibody

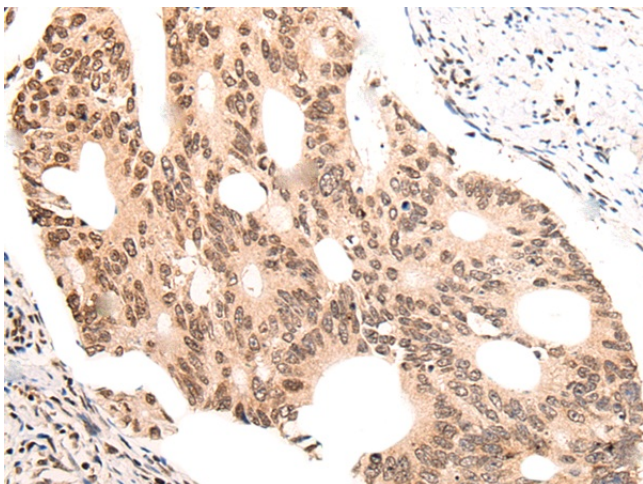
Product data:

| | |
|-----------------------|--|
| Product Type: | Primary Antibodies |
| Applications: | IHC |
| Recommended Dilution: | IHC: 40-200 Positive control: Human colorectal cancer Predicted cell location: Nucleus |
| Reactivity: | Human, Mouse |
| Host: | Rabbit |
| Isotype: | IgG |
| Clonality: | Polyclonal |
| Immunogen: | Synthetic peptide of human KNOP1 |
| Formulation: | pH7.4 PBS, 0.05% NaN ₃ , 40% Glycerol |
| Concentration: | lot specific |
| Purification: | Antigen affinity purification |
| Conjugation: | Unconjugated |
| Storage: | Store at -20°C. |
| Stability: | 1 year |
| Gene Name: | lysine-rich nucleolar protein 1 |
| Database Link: | Entrez Gene 400506 Human Q1ED39 |
| Background: | poly(A) RNA binding |
| Synonyms: | 101F10.1; C16orf88; FAM191A; TSG118 |

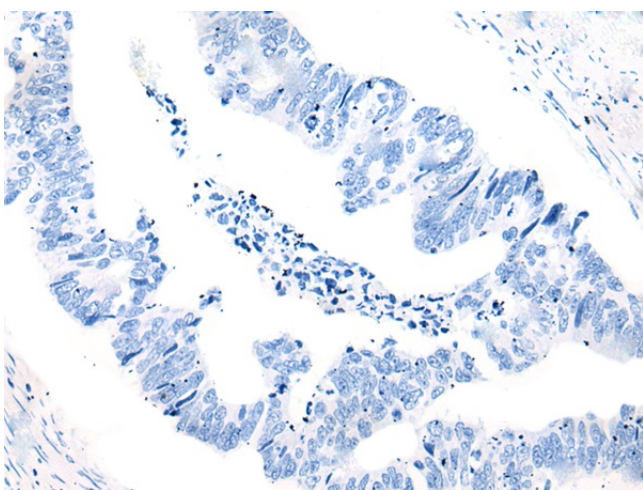


[View online »](#)

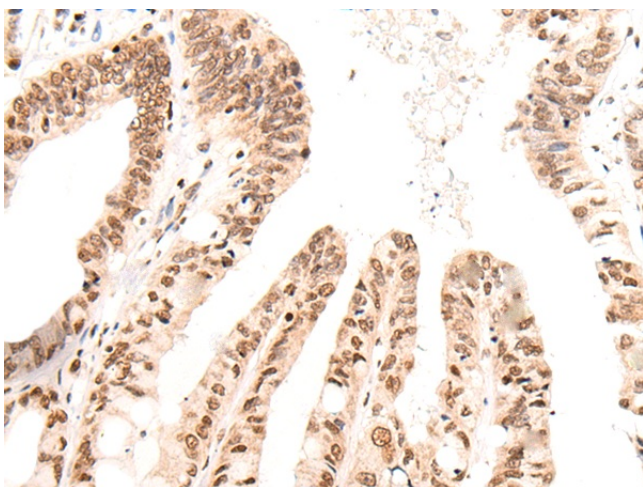
Product images:



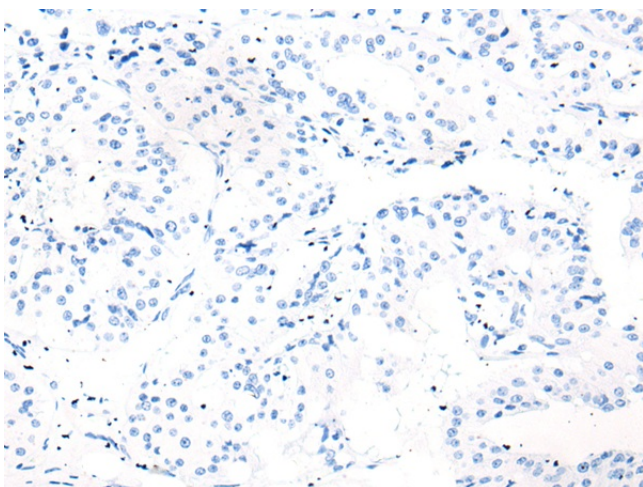
Immunohistochemistry of paraffin-embedded Human colorectal cancer tissue using TA372140 (KNOP1 Antibody) at dilution 1/55 (Original magnification: $\times 200$)



Immunohistochemistry of paraffin-embedded Human colorectal cancer tissue using TA372140 (KNOP1 Antibody) at dilution 1/55, treated with synthetic peptide. (Original magnification: $\times 200$)



Immunohistochemistry of paraffin-embedded Human liver cancer tissue using TA372140 (KNOP1 Antibody) at dilution 1/55 (Original magnification: ×200)



Immunohistochemistry of paraffin-embedded Human liver cancer tissue using TA372140 (KNOP1 Antibody) at dilution 1/55, treated with synthetic peptide. (Original magnification: ×200)