

Product datasheet for **TA372139S**

C16orf44 (KLHL36) Rabbit Polyclonal Antibody

Product data:

Product Type:	Primary Antibodies
Applications:	WB
Recommended Dilution:	WB: 200-1000 WB positive control: Human bladder transitional cell carcinoma grade 2-3 tissue lysate
Reactivity:	Human, Mouse, Rat
Host:	Rabbit
Isotype:	IgG
Clonality:	Polyclonal
Immunogen:	Synthetic peptide of human KLHL36
Formulation:	pH7.4 PBS, 0.05% NaN ₃ , 40% Glycerol
Concentration:	lot specific
Purification:	Antigen affinity purification
Conjugation:	Unconjugated
Storage:	Store at -20°C.
Stability:	1 year
Predicted Protein Size:	70 kDa
Gene Name:	kelch like family member 36
Database Link:	Entrez Gene 79786 Human Q8N4N3

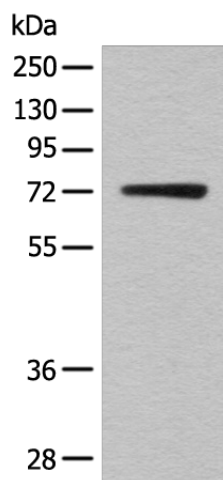
Background: C16orf44 is a 616 amino acid protein that contains six Kelch repeats, one BTB/POZ domain and one BTB/Kelch associated (BACK) domain. C16orf44 is believed to play a role in protein ubiquitination and may function as a substrate-specific adapter of an E3 ubiquitin-protein ligase complex. E3 ligases accept a ubiquitin residue from an E2 ubiquitin-conjugating enzyme and immediately transfer that residue to a protein that is targeted for degradation. Specifically, C16orf44 interacts with CUL-3, a member of the cullin family of mediators that participate in the selective targeting of proteins for ubiquitin-mediated proteolysis. Due to alternative splicing events, two isoforms of C16orf44 are expressed.

Synonyms: C16orf44; FLJ12543



[View online »](#)

Product images:



Gel: 8%SDS-PAGE
Lysate: 40 μ g
Lane: Human bladder transitional cell carcinoma grade 2-3 tissue lysate
Primary antibody: [TA372139] (KLHL36 Antibody) at dilution 1/300
Secondary antibody: Goat anti rabbit IgG at 1/8000 dilution
Exposure time: 1 minute