

Product datasheet for **TA372137S**

C15orf24 (EMC7) Rabbit Polyclonal Antibody

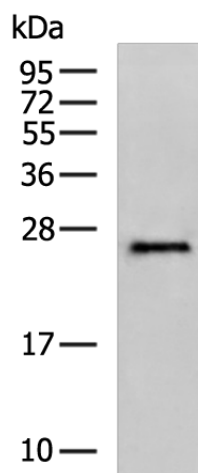
Product data:

Product Type:	Primary Antibodies
Applications:	IHC, WB
Recommended Dilution:	WB: 500-2000 WB positive control: Mouse skeletal muscle tissue lysate IHC: 50-200 Positive control: Human liver cancer Predicted cell location: Cytoplasm
Reactivity:	Human, Mouse
Host:	Rabbit
Isotype:	IgG
Clonality:	Polyclonal
Immunogen:	Synthetic peptide of human EMC7
Formulation:	pH7.4 PBS, 0.05% NaN ₃ , 40% Glycerol
Concentration:	lot specific
Purification:	Antigen affinity purification
Conjugation:	Unconjugated
Storage:	Store at -20°C.
Stability:	1 year
Predicted Protein Size:	26 kDa
Gene Name:	ER membrane protein complex subunit 7
Database Link:	Entrez Gene 56851 Human Q9NPA0
Background:	Has been termed C11orf3, but is not the official C11orf3 as defined by HGNC and furthermore maps to chromosome 15.
Synonyms:	2900064A13Rik; AI451465; c11orf3; ORF3; RP23-52C15.1

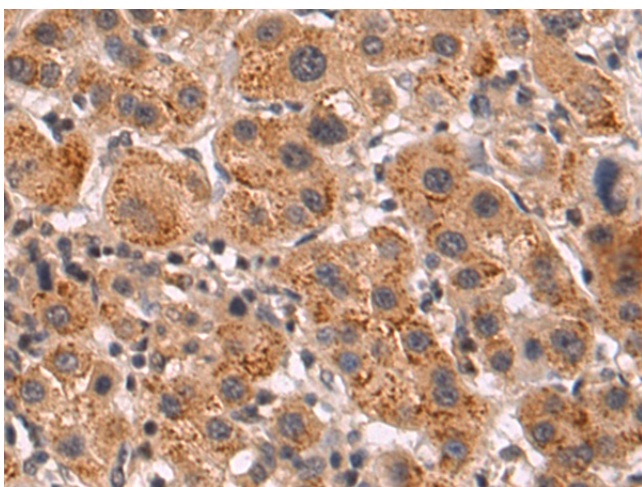


[View online »](#)

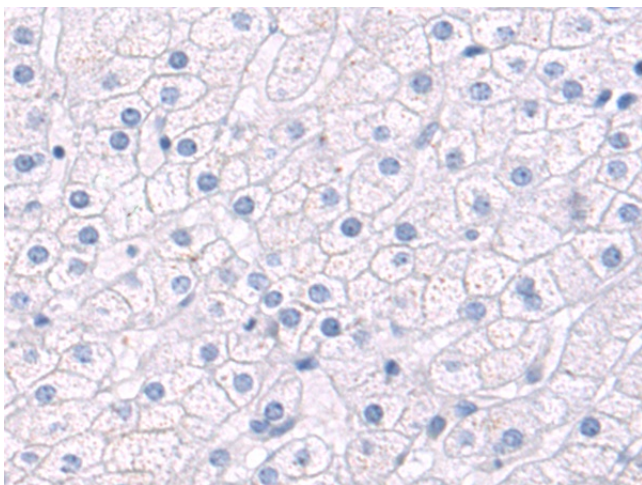
Product images:



Gel: 12%SDS-PAGE
 Lysate: 40 µg
 Lane: Mouse skeletal muscle tissue lysate
 Primary antibody: [TA372137] (EMC7 Antibody) at dilution 1/400
 Secondary antibody: Goat anti rabbit IgG at 1/5000 dilution
 Exposure time: 1 minute



Immunohistochemistry of paraffin-embedded Human liver cancer tissue using [TA372137] (EMC7 Antibody) at dilution 1/50 (Original magnification: ×200)



Immunohistochemistry of paraffin-embedded Human liver cancer tissue using [TA372137] (EMC7 Antibody) at dilution 1/50, treated with synthetic peptide. (Original magnification: ×200)