

## Product datasheet for **TA372132**

### **C13orf24 (PIBF1) Rabbit Polyclonal Antibody**

#### **Product data:**

Product Type:	Primary Antibodies
Applications:	IHC, WB
Recommended Dilution:	WB: 500-2000 WB positive control: 231K562 and 293T cell lysates IHC: 10-50 Positive control: Human prostate cancer Predicted cell location: Cytoplasm
Reactivity:	Human
Host:	Rabbit
Isotype:	IgG
Clonality:	Polyclonal
Immunogen:	Synthetic peptide of human PIBF1
Formulation:	pH7.4 PBS, 0.05% NaN <sub>3</sub> , 40% Glycerol
Concentration:	lot specific
Purification:	Antigen affinity purification
Conjugation:	Unconjugated
Storage:	Store at -20°C.
Stability:	1 year
Predicted Protein Size:	90 kDa
Gene Name:	progesterone immunomodulatory binding factor 1
Database Link:	<a href="#">Entrez Gene 10464 Human Q8WXW3</a>



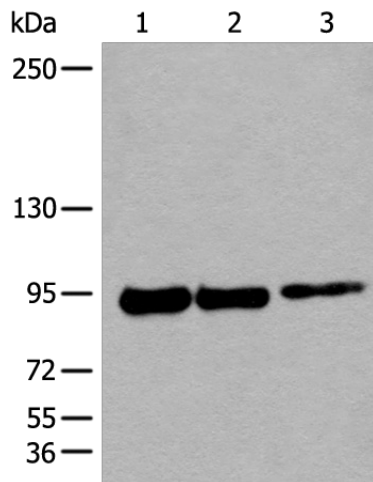
[View online »](#)

**Background:**

PIBF (Progesterone-Induced Blocking Factor 1) is synthesized during pregnancy in response to progesterone by progesterone receptor-positive T lymphocytes (mostly gamma-delta T cells). In the presence of PIBF, natural killer (NK) cells inhibit the release of perforin from storage granules and therefore fail to lyse target cells. In humans, the amount of cells that express PIBF is significantly higher in healthy pregnant women than in women at risk for premature pregnancy termination. Full-length PIBF is associated with the nucleus, whereas secretion of shorter forms is induced by activation of the cell. Research suggests that PIBF functions as a transcription factor in its full-length form, while smaller forms may act as cytokines. The PIBF gene encodes a deduced hydrophilic 757-amino acid alpha-helical protein with an N-terminal signal sequence, a leucine zipper motif, a basic zipper sequence, a PEST sequence, a nuclear localization signal, an endoplasmic reticulum membrane retention signal, and many presumed N-glycosylation and phosphorylation sites.

**Synonyms:**

C13orf24; KIAA1008; PIBF; RP11-505F3.1

**Product images:**

Gel: 6%SDS-PAGE

Lysate: 40 µg

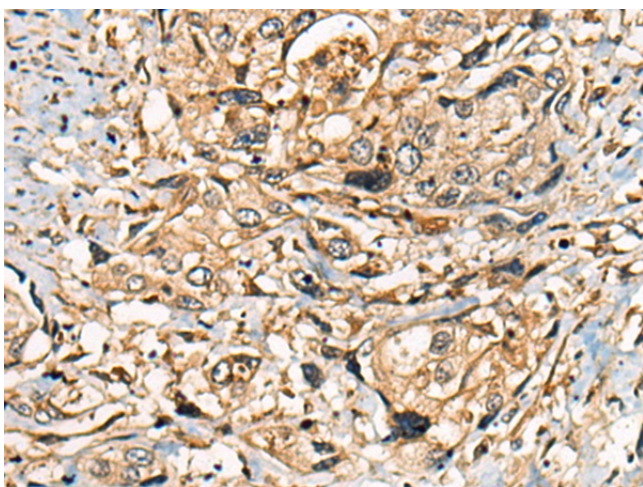
Lane 1-3: 231

K562 and 293T cell lysates

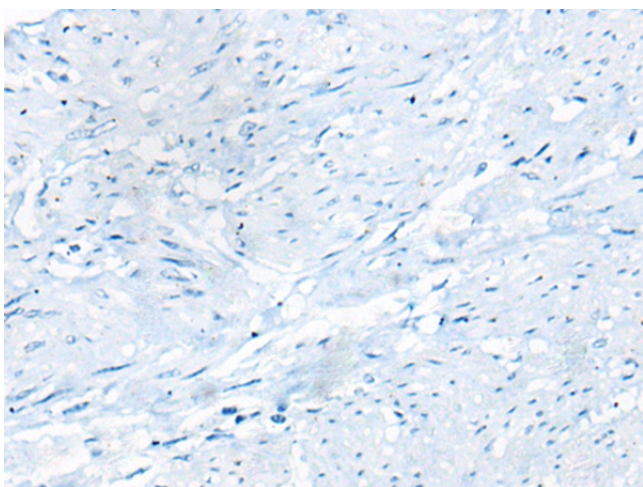
Primary antibody: TA372132 (PIBF1 Antibody) at dilution 1/250

Secondary antibody: Goat anti rabbit IgG at 1/8000 dilution

Exposure time: 1 minute



Immunohistochemistry of paraffin-embedded Human prostate cancer tissue using TA372132 (PIBF1 Antibody) at dilution 1/25 (Original magnification:  $\times 200$ )



Immunohistochemistry of paraffin-embedded Human prostate cancer tissue using TA372132 (PIBF1 Antibody) at dilution 1/25, treated with synthetic peptide. (Original magnification:  $\times 200$ )