

## Product datasheet for **TA372128**

### **C10orf57 (TMEM254) Rabbit Polyclonal Antibody**

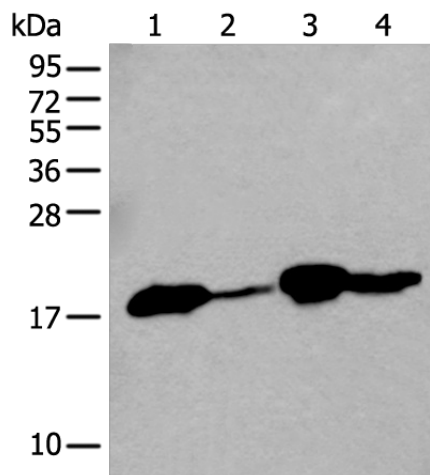
#### **Product data:**

<b>Product Type:</b>	Primary Antibodies
<b>Applications:</b>	WB
<b>Recommended Dilution:</b>	WB: 200-1000 WB positive control: Human heart tissue □ PC-3 cell □ Mouse heart tissue and Human cerebrum tissue lysates
<b>Reactivity:</b>	Human, Mouse
<b>Host:</b>	Rabbit
<b>Isotype:</b>	IgG
<b>Clonality:</b>	Polyclonal
<b>Immunogen:</b>	Synthetic peptide of human TMEM254
<b>Formulation:</b>	pH7.4 PBS, 0.05% NaN <sub>3</sub> , 40% Glycerol
<b>Concentration:</b>	lot specific
<b>Purification:</b>	Antigen affinity purification
<b>Conjugation:</b>	Unconjugated
<b>Storage:</b>	Store at -20°C.
<b>Stability:</b>	1 year
<b>Predicted Protein Size:</b>	14 kDa
<b>Gene Name:</b>	transmembrane protein 254
<b>Database Link:</b>	<a href="#">Entrez Gene 80195 Human Q8TBM7</a>
<b>Background:</b>	The protein belongs to the TMEM214 family. Subcellular location is Membrane; Multi-pass membrane protein.
<b>Synonyms:</b>	bA369J21.6; C10orf57; FLJ17224; FLJ17303; FLJ98852; FLJ99695; RP11-369J21.6



[View online »](#)

## Product images:



Gel: 12%SDS-PAGE

Lysate: 40  $\mu$ g

Lane 1-4: Human heart tissue

PC-3 cell

Mouse heart tissue and Human cerebrum tissue lysates

Primary antibody: TA372128 (TMEM254 Antibody) at dilution 1/300

Secondary antibody: Goat anti rabbit IgG at 1/8000 dilution

Exposure time: 15 seconds