

## Product datasheet for **TA372124S**

### PD-L1 (CD274) Rabbit Polyclonal Antibody

#### Product data:

Product Type:	Primary Antibodies
Applications:	IHC, WB
Recommended Dilution:	WB: 500-2000 WB positive control: HepG2 cell lysate IHC: 50-100 Positive control: Human brain Predicted cell location: Cell membrane
Reactivity:	Human
Host:	Rabbit
Isotype:	IgG
Clonality:	Polyclonal
Immunogen:	Synthetic peptide of human CD274
Formulation:	pH7.4 PBS, 0.05% NaN <sub>3</sub> , 40% Glycerol
Concentration:	lot specific
Purification:	Antigen affinity purification
Conjugation:	Unconjugated
Storage:	Store at -20°C.
Stability:	1 year
Predicted Protein Size:	33 kDa
Gene Name:	CD274 molecule
Database Link:	<a href="#">Entrez Gene 29126 Human Q9NZQ7</a>



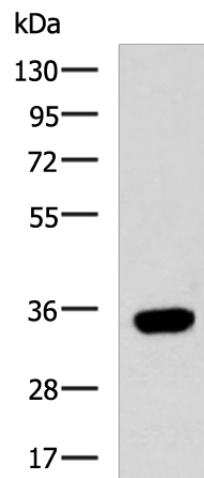
[View online »](#)

**Background:**

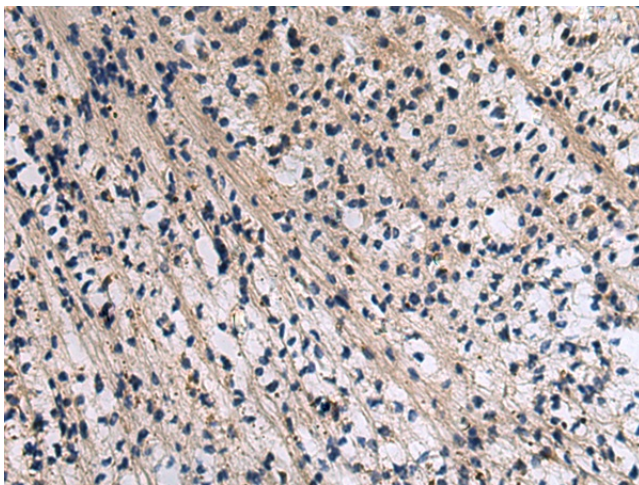
This gene encodes an immune inhibitory receptor ligand that is expressed by hematopoietic and non-hematopoietic cells, such as T cells and B cells and various types of tumor cells. The encoded protein is a type I transmembrane protein that has immunoglobulin V-like and C-like domains. Interaction of this ligand with its receptor inhibits T-cell activation and cytokine production. During infection or inflammation of normal tissue, this interaction is important for preventing autoimmunity by maintaining homeostasis of the immune response. In tumor microenvironments, this interaction provides an immune escape for tumor cells through cytotoxic T-cell inactivation. Expression of this gene in tumor cells is considered to be prognostic in many types of human malignancies, including colon cancer and renal cell carcinoma. Alternative splicing results in multiple transcript variants.

**Synonyms:**

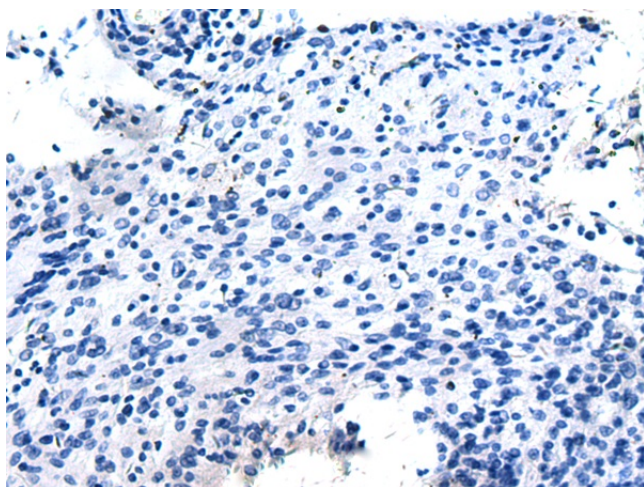
B7-H; B7-H1; B7H1; MGC142294; MGC142296; PD-L1; PDCD1L1; PDCD1LG1; PDL1

**Product images:**

Gel: 8%SDS-PAGE  
Lysate: 40 µg  
Lane: HepG2 cell lysate  
Primary antibody: [TA372124] (CD274 Antibody) at dilution 1/700  
Secondary antibody: Goat anti rabbit IgG at 1/5000 dilution  
Exposure time: 3 minutes



Immunohistochemistry of paraffin-embedded Human brain tissue using [TA372124] (CD274 Antibody) at dilution 1/30 (Original magnification: ×200)



Immunohistochemistry of paraffin-embedded Human brain tissue using [TA372124] (CD274 Antibody) at dilution 1/30, treated with synthetic peptide. (Original magnification:  $\times 200$ )