

## Product datasheet for **TA372119**

### ARL 1 (ARL1) Rabbit Polyclonal Antibody

#### Product data:

|                         |  |
|-------------------------|--|
| Product Type:           | Primary Antibodies   |
| Applications:           | WB   |
| Recommended Dilution:   | WB: 200-1000<br>WB positive control: HeLa, K562 and HEPG2 cell lysates |
| Reactivity:             | Human, Mouse, Rat  |
| Host:                   | Rabbit   |
| Isotype:                | IgG  |
| Clonality:              | Polyclonal   |
| Immunogen:              | Synthetic peptide of human ARL1  |
| Formulation:            | pH7.4 PBS, 0.05% NaN <sub>3</sub> , 40% Glycerol                       |
| Concentration:          | lot specific   |
| Purification:           | Antigen affinity purification  |
| Conjugation:            | Unconjugated   |
| Storage:                | Store at -20°C.  |
| Stability:              | 1 year   |
| Predicted Protein Size: | 20 kDa   |
| Gene Name:              | ADP ribosylation factor like GTPase 1                                  |
| Database Link:          | <a href="#">Entrez Gene 400 Human P40616</a>                           |

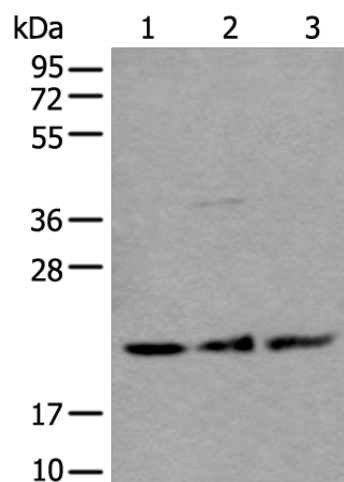
**Background:** The protein encoded by this gene belongs to the ARL (ADP-ribosylation factor-like) family of proteins, which are structurally related to ADP-ribosylation factors (ARFs). ARFs, described as activators of cholera toxin (CT) ADP-ribosyltransferase activity, regulate intracellular vesicular membrane trafficking, and stimulate a phospholipase D (PLD) isoform. Although, ARL proteins were initially thought not to activate CT or PLD, later work showed that they are weak stimulators of PLD and CT in a phospholipid dependent manner. Alternative splicing results in multiple transcript variants encoding different isoforms.

**Synonyms:** ARFL1



[View online »](#)

## Product images:



Gel: 12%SDS-PAGE

Lysate: 40  $\mu$ g

Lane 1-3: HeLa

K562 and HEPG2 cell lysates

Primary antibody: TA372119 (ARL1 Antibody) at dilution 1/250

Secondary antibody: Goat anti rabbit IgG at 1/8000 dilution

Exposure time: 90 seconds