

## Product datasheet for **TA372118S**

### **BXDC2 (BRIX1) Rabbit Polyclonal Antibody**

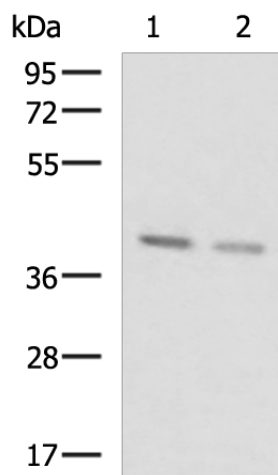
#### **Product data:**

Product Type:	Primary Antibodies
Applications:	WB
Recommended Dilution:	WB: 200-1000 WB positive control: Hela and HepG2 cell lysates
Reactivity:	Human
Host:	Rabbit
Isotype:	IgG
Clonality:	Polyclonal
Immunogen:	Synthetic peptide of human BRIX1
Formulation:	pH7.4 PBS, 0.05% NaN <sub>3</sub> , 40% Glycerol
Concentration:	lot specific
Purification:	Antigen affinity purification
Conjugation:	Unconjugated
Storage:	Store at -20°C.
Stability:	1 year
Predicted Protein Size:	41 kDa
Gene Name:	BRX1, biogenesis of ribosomes
Database Link:	<a href="#">Entrez Gene 55299 Human Q8TDN6</a>
Background:	Required for biogenesis of the 60S ribosomal subunit.
Synonyms:	BRIX; BXDC2



[View online »](#)

## Product images:



Gel: 8%SDS-PAGE

Lysate: 40  $\mu$ g

Lane 1-2: HeLa and HepG2 cell lysates

Primary antibody: [TA372118] (BRX1 Antibody) at dilution 1/500

Secondary antibody: Goat anti rabbit IgG at 1/5000 dilution

Exposure time: 10 seconds