

Product datasheet for **TA372117S**

BXDC1 (RPF2) Rabbit Polyclonal Antibody

Product data:

Product Type:	Primary Antibodies
Applications:	WB
Recommended Dilution:	WB: 200-1000 WB positive control: K562,Hela and A549 cell lysates
Reactivity:	Human
Host:	Rabbit
Isotype:	IgG
Clonality:	Polyclonal
Immunogen:	Synthetic peptide of human RPF2
Formulation:	pH7.4 PBS, 0.05% NaN ₃ , 40% Glycerol
Concentration:	lot specific
Purification:	Antigen affinity purification
Conjugation:	Unconjugated
Storage:	Store at -20°C.
Stability:	1 year
Predicted Protein Size:	36 kDa
Gene Name:	ribosome production factor 2 homolog
Database Link:	Entrez Gene 84154 Human Q9H7B2

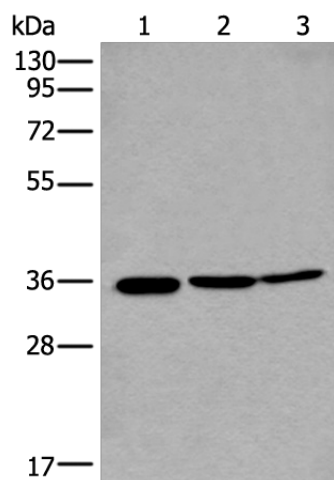
Background: BXDC1 (Brix domain-containing protein 1) is a 306 amino acid protein encoded by the human gene BXDC1. BXDC1 is a nuclear protein that contains one Brix domain. Brix domain containing proteins represent a family of proteins involved in the biogenesis of large ribosomal subunits. The Brix domain is a region with homology to the yeast protein Pitx1 (Ribosome biogenesis protein BRX1). Pitx1 is part of a complex that includes RPF1, RPF2 and SSF1 or SSF2. This complex is required for the biogenesis of the 60S ribosomal subunit.

Synonyms: bA397G5.4; BXDC1



[View online »](#)

Product images:



Gel: 8%SDS-PAGE

Lysate: 40 μ g

Lane 1-3: K562

Hela and A549 cell lysates

Primary antibody: [TA372117] (RPF2 Antibody) at dilution 1/250

Secondary antibody: Goat anti rabbit IgG at 1/8000 dilution

Exposure time: 10 seconds