

## Product datasheet for **TA372116S**

### BTBD6 Rabbit Polyclonal Antibody

#### Product data:

Product Type:	Primary Antibodies
Applications:	IHC, WB
Recommended Dilution:	WB: 200-1000 WB positive control: Human gastric carcinoma tissue lysate IHC: 10-50 Positive control: Human esophagus cancer Predicted cell location: Cytoplasm
Reactivity:	Human, Mouse
Host:	Rabbit
Isotype:	IgG
Clonality:	Polyclonal
Immunogen:	Synthetic peptide of human BTBD6
Formulation:	pH7.4 PBS, 0.05% NaN <sub>3</sub> , 40% Glycerol
Concentration:	lot specific
Purification:	Antigen affinity purification
Conjugation:	Unconjugated
Storage:	Store at -20°C.
Stability:	1 year
Predicted Protein Size:	53 kDa
Gene Name:	BTB domain containing 6
Database Link:	<a href="#">Entrez Gene 90135 Human Q96KE9</a>



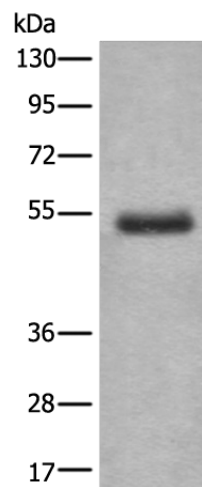
[View online »](#)

**Background:**

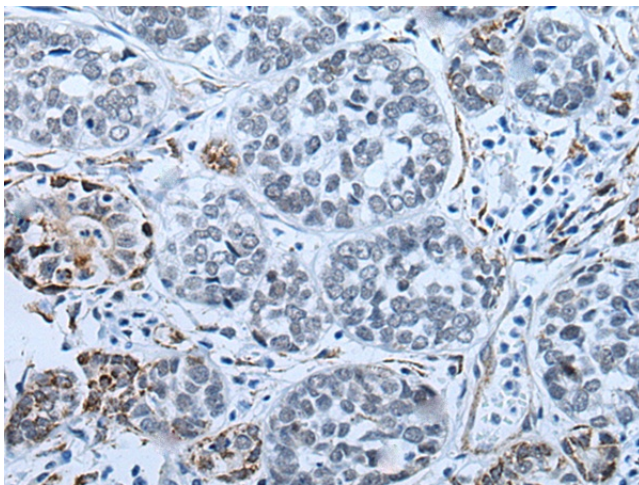
BTBD6 (BTB/POZ domain-containing protein 6), also known as BDPL or lens BTB domain protein, is a 410 amino acid protein that contains one BTB/POZ domain and is specifically expressed in the lens. The BTB/POZ domain mediates homomeric and heteromeric POZ-POZ interactions and is common to transcriptional regulators involved in chromatin modeling. In several BTB/POZ containing proteins, including BCL-6 and the promyelocytic leukemia zinc-finger (PLZF) oncoprotein, this domain interacts with the SMRT/N-CoR-mSin3A HDAC complex and is directly involved in repressing and silencing gene transcription. When this domain is deleted, as with the oncogenic PLZF-RAR chimera of promyelocytic leukemias, this transcriptional repression is attenuated. This suggests that BTBD6 may play a role in transcription regulation in the lens.

**Synonyms:**

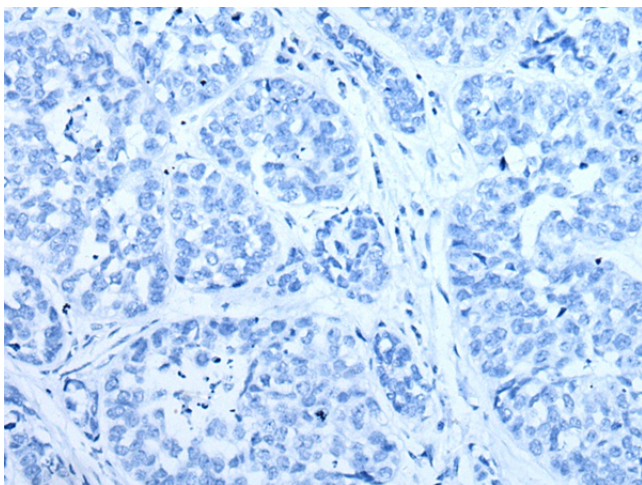
BDPL; OTTHUMP00000163908

**Product images:**

Gel: 6%SDS-PAGE  
Lysate: 40 µg  
Lane: Human gastric carcinoma tissue lysate  
Primary antibody: [TA372116] (BTBD6 Antibody) at dilution 1/200  
Secondary antibody: Goat anti rabbit IgG at 1/8000 dilution  
Exposure time: 10 minutes



Immunohistochemistry of paraffin-embedded Human esophagus cancer tissue using [TA372116] (BTBD6 Antibody) at dilution 1/25 (Original magnification: x200)



Immunohistochemistry of paraffin-embedded Human esophagus cancer tissue using [TA372116] (BTBD6 Antibody) at dilution 1/25, treated with synthetic peptide. (Original magnification: ×200)